



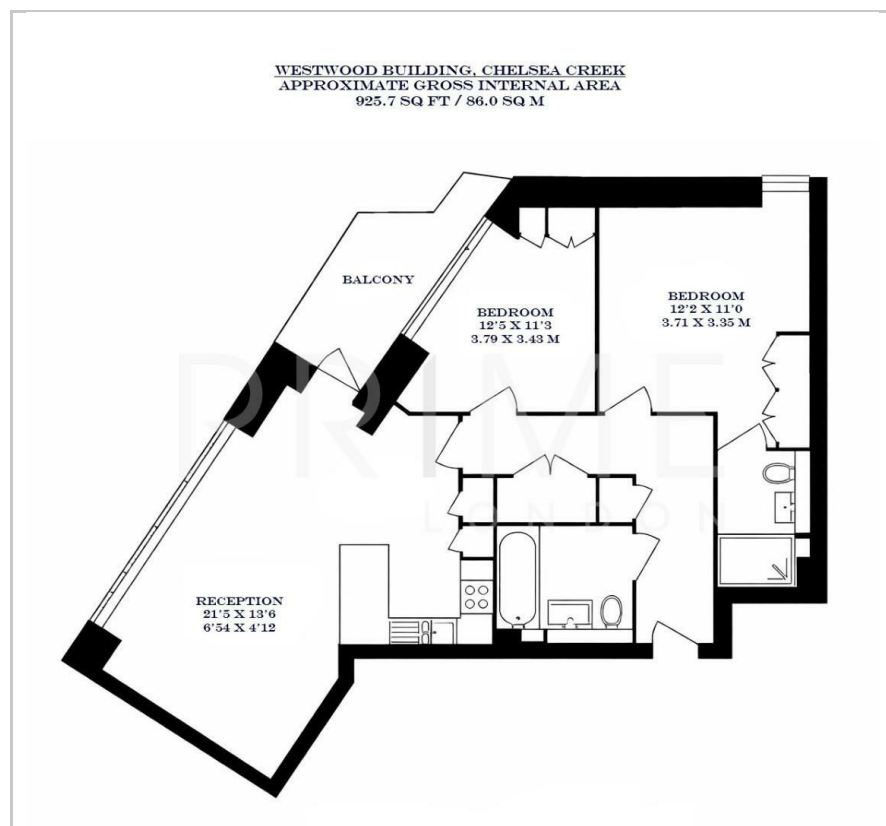
Westwood Building

4 Lockgate Road, Chelsea Creek, SW6 2LY

£842 Per Week



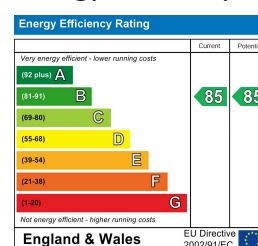
Floor Plan



Area Map



Energy Efficiency Graph



Viewing

By appointment. Contact us on 0207 052 1075 if you wish to arrange a viewing appointment for this property, or require further information.

- Exceptional two bedroom ▪ 925 sq ft (86 sqm) apartment
- Open plan reception/kitchen ▪ Residents' gym, swimming pool and cinema
- Just 0.1 miles to Imperial ▪ 24 hour concierge Wharf Station

This exceptional two bedroom apartment, located in the popular Chelsea Creek development, is available to let through Prime London.

Totalling 925 sq ft (86 sqm) the property boasts a generous open plan reception and kitchen area with floor to ceiling windows, allowing for excellent natural light throughout. Both bedrooms are modern and spacious with built-in wardrobe storage areas. The master bedroom features a sleek ensuite, while the second bedroom allows access to the private balcony.

The development offers a residents' gym, spa and 24 hour concierge.

Located in the prestigious area of Chelsea, the property is just a short walk away from some of King's Road's restaurants, cafes and boutiques.

For transportation, Imperial Wharf station is located a stone's throw away, offering excellent transport links to the city.



These particulars, whilst believed to be accurate are set out as a general outline only for guidance and do not constitute any part of an offer or contract. Intending purchasers should not rely on them as statements of representation of fact, but must satisfy themselves by inspection or otherwise as to their accuracy. No person in this firm's employment has the authority to make or give any representation or warranty in respect of the property.

21 Grosvenor Gardens, Belgravia, London SW1W 0BP | Palace View, 131 Lambeth Road, London SE1 7BT

Tel: 0207 052 1075 | 0207 928 6663 Email: Office@PrimeLondonResidential.com www.PrimeLondonResidential.com