

Lighterman Towers

1 Harbour Avenue, Chelsea Island, SW10 0HQ

£808 Per Week



1



1

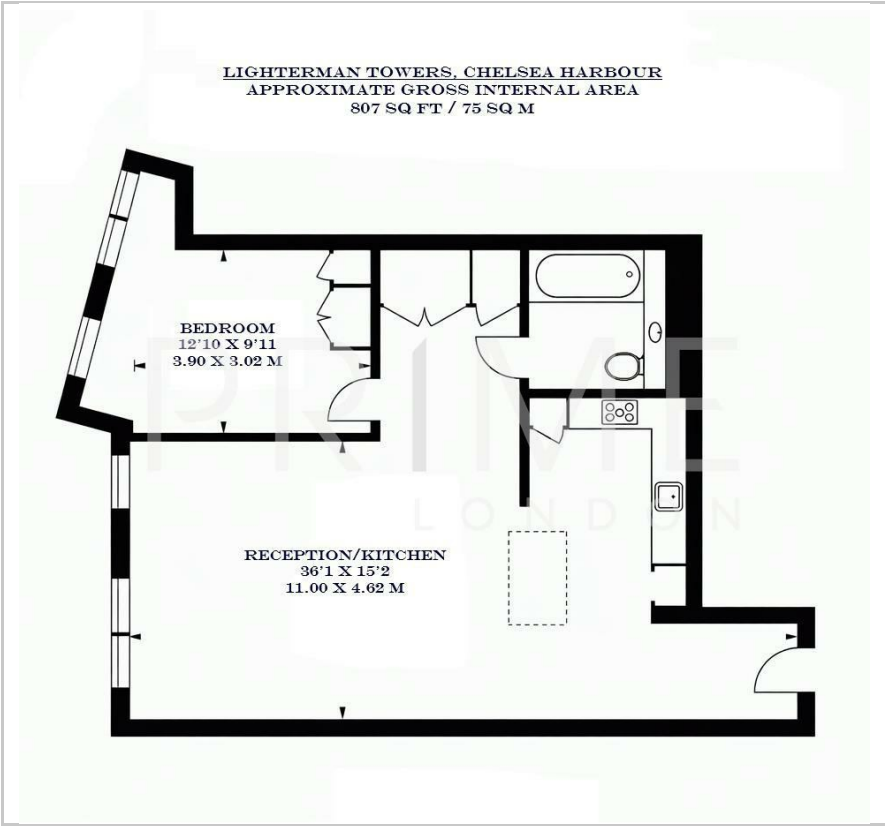


1

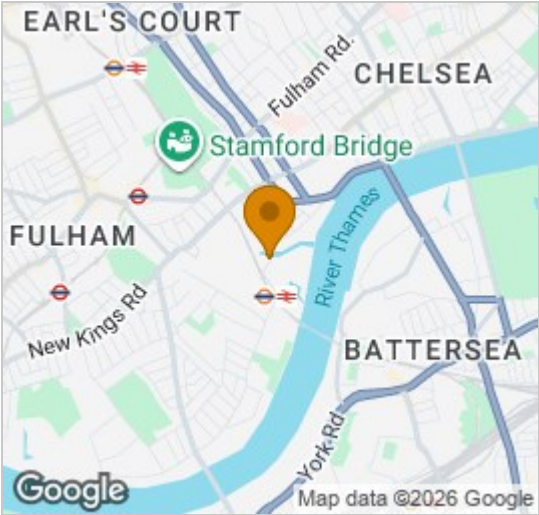


B

Floor Plan



Area Map



Energy Efficiency Graph



Viewing

By appointment. Contact us on 0207 052 1075 if you wish to arrange a viewing appointment for this property, or require further information.

- One bedroom apartment
- 807 sq ft (75 sqm)
- Floor to ceiling windows
- Residents' gym and terrace
- Located a short walk away from King's Road
- 24 hour concierge



This exceptional one bedroom apartment, located in the sought after Chelsea Harbour, is available for lease through Prime London.

Totalling 807 sq ft (75 sqm), the property boasts an open plan reception and kitchen area, with floor to ceiling windows allowing for excellent natural light throughout. The apartment offers a generous double bedroom with built in storage spaces and a modern, fully fitted kitchen with integrated appliances.

The property is situated within the prestigious Lighterman Towers development, which offers residents a private gym, terrace and 24 hour concierge.

Positioned a short walk from King's Road, the apartment has easy access to some of London's best restaurants, cafes and boutiques.

For transport, Lighterman Towers is a stone's throw walk from Imperial Wharf station, offering excellent transport links.



These particulars, whilst believed to be accurate are set out as a general outline only for guidance and do not constitute any part of an offer or contract. Intending purchasers should not rely on them as statements of representation of fact, but must satisfy themselves by inspection or otherwise as to their accuracy. No person in this firm's employment has the authority to make or give any representation or warranty in respect of the property.