

Lockside House

3 Thurstan Street, Chelsea Creek, SW6 2XB

£800 Per Week



1



1

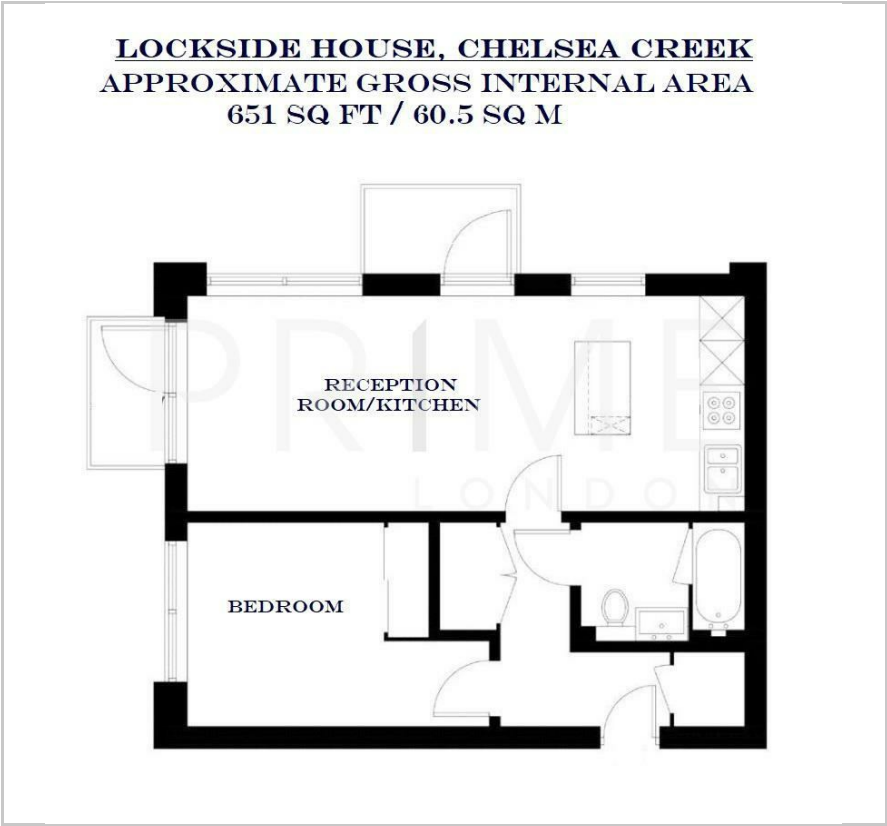


1



B

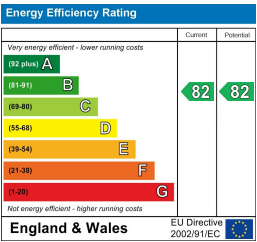
Floor Plan



Area Map



Energy Efficiency Graph



Viewing

By appointment. Contact us on 0207 052 1075 if you wish to arrange a viewing appointment for this property, or require further information.

- One bedroom apartment
- 651 sq ft (60.5 sqm)
- Fully furnished
- Wooden flooring and comfort cooling
- Residents' pool, sauna, steam room, gym and treatment room
- 24 hour concierge

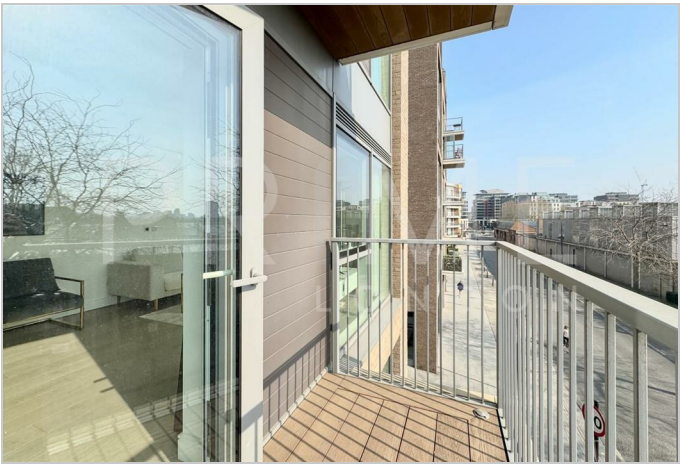


This beautifully appointed dual aspect one bedroom apartment, located in the sought after Chelsea Creek, is available for lease through Prime London.

Spanning approximately 651 sq ft (60.5 sqm), the property benefits from a large open plan reception and fully fitted kitchen with substantial breakfast bar. Through the hallway you will find a modern family bathroom, storage, and a well proportioned bedroom with built in storage. The property also benefits from wooden flooring and comfort cooling.

Residents of Chelsea Creek benefit from exclusive use of a state of the art health and fitness centre, including an indoor swimming pool, sauna, steam room, gymnasium and treatment room. Residents also benefit from a 24 hour concierge.

The Imperial Wharf rail station provides quick links to Clapham Junction, Shepherds Bush (for the Central line), and Fulham Broadway underground station is only 0.7 mile away.



These particulars, whilst believed to be accurate are set out as a general outline only for guidance and do not constitute any part of an offer or contract. Intending purchasers should not rely on them as statements of representation of fact, but must satisfy themselves by inspection or otherwise as to their accuracy. No person in this firms employment has the authority to make or give any representation or warranty in respect of the property.