

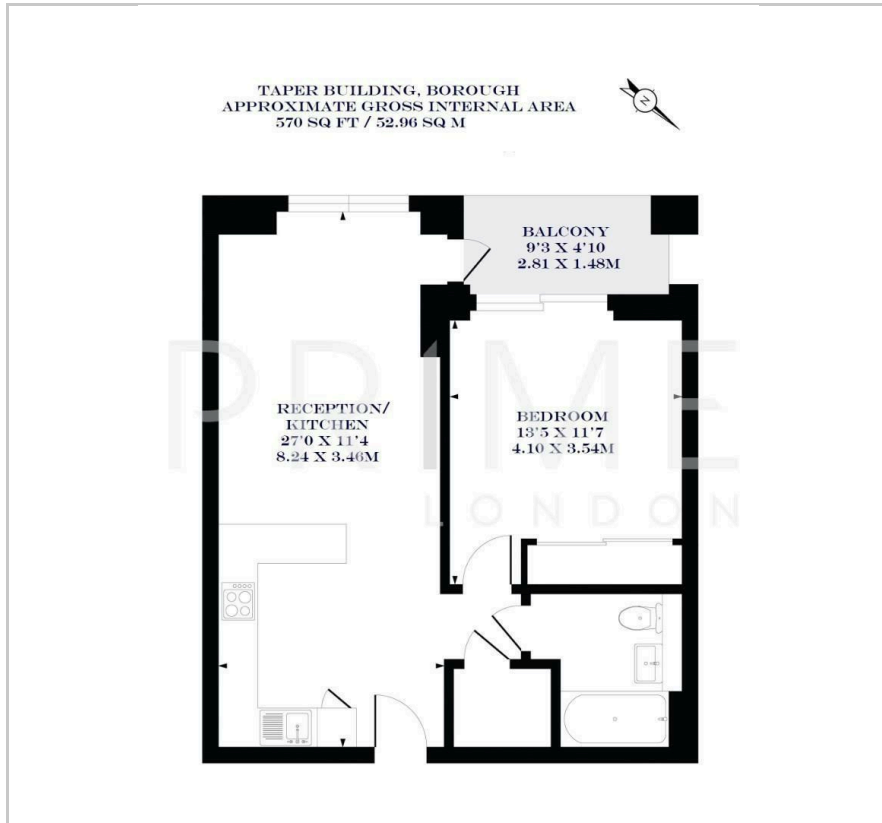
Taper Building

175 Long Lane, Borough, SE1 4GT

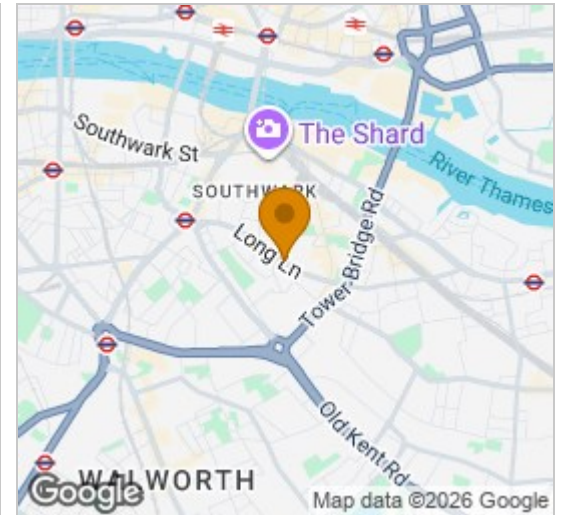
£499,000

1 bed 1 bath 1 living area B

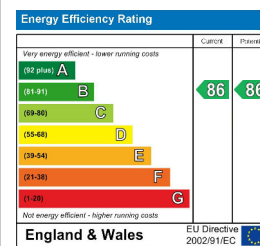
Floor Plan



Area Map



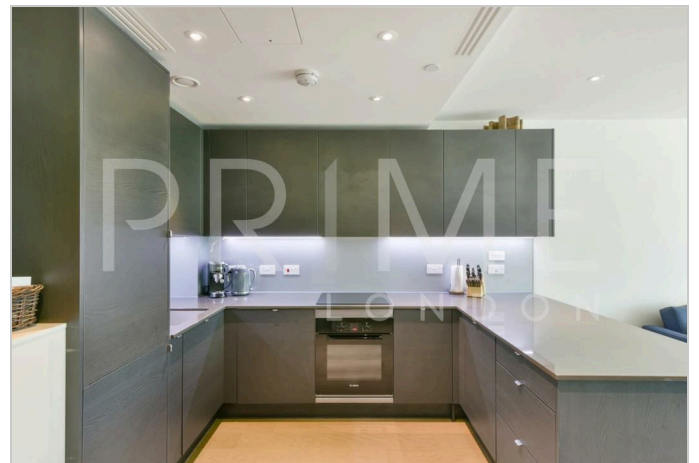
Energy Efficiency Graph



Viewing

By appointment. Contact us on 0207 928 6663 if you wish to arrange a viewing appointment for this property, or require further information.

- Modern one bedroom
- Under floor heating and apartment
- Furnished
- Private balcony
- South facing
- Residents' gym and concierge

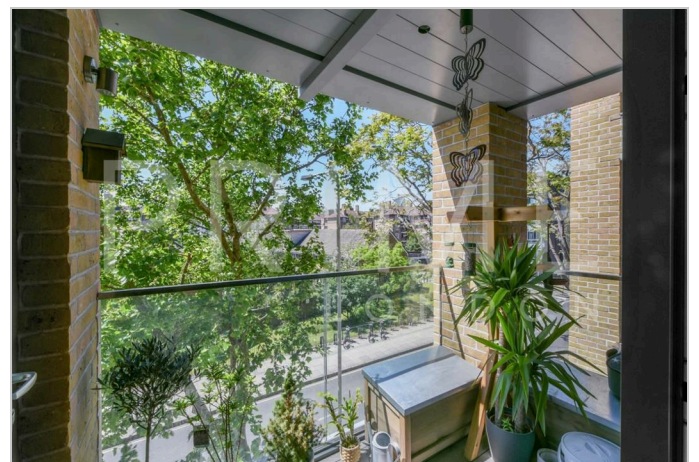


This beautiful one bedroom apartment, situated in the popular Taper Building, offers fantastic natural light from south-facing floor to ceiling windows, and is available to purchase exclusively through Prime London.

The property boasts both under floor heating and comfort cooling.

In its 570 sq ft (52.96 sqm) this well designed property comprises a bright and spacious open plan kitchen with Bosch appliances and reception leading to a private balcony, a generously sized bedroom with plenty of space as well as a built in floor to ceiling wardrobe, an intelligently designed, smart-tech fitted bathroom with built in storage within a lit vanity mirror, and temperature controlled bath and shower.

A residents' only 24 hour gym, as well as roof terrace and garden are based on site and overseen by a friendly concierge and security team. London Bridge station is also just 0.3 miles away, with both Overground, Northern line and Jubilee line services.



These particulars, whilst believed to be accurate are set out as a general outline only for guidance and do not constitute any part of an offer or contract. Intending purchasers should not rely on them as statements of representation of fact, but must satisfy themselves by inspection or otherwise as to their accuracy. No person in this firm's employment has the authority to make or give any representation or warranty in respect of the property.