

## Zeiss Court

46 Lancaster Street, Southwark, SE1 0FY

£700 Per Week



2



2

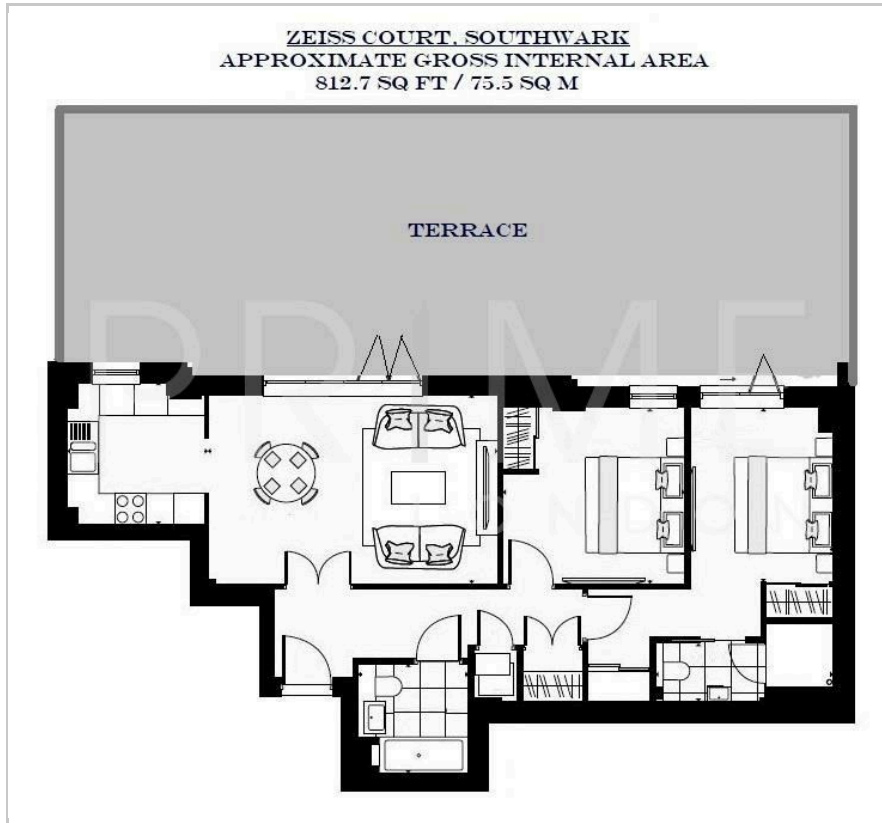


1

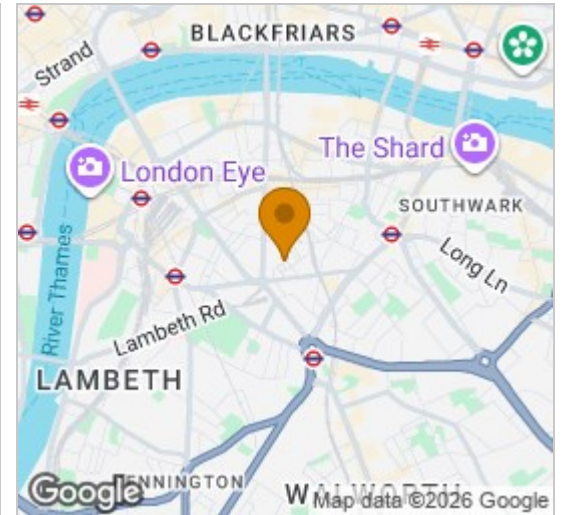


B

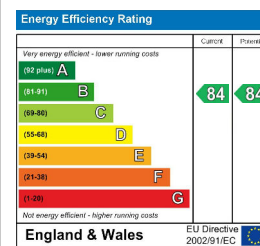
## Floor Plan



## Area Map



## Energy Efficiency Graph



## Viewing

By appointment. Contact us on 0207 928 6663 if you wish to arrange a viewing appointment for this property, or require further information.

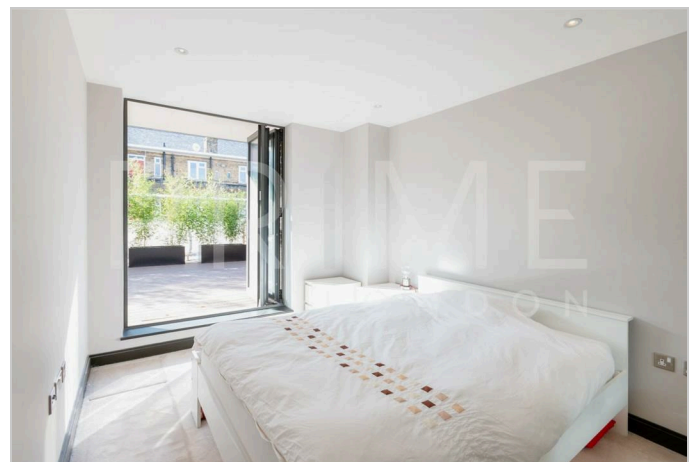
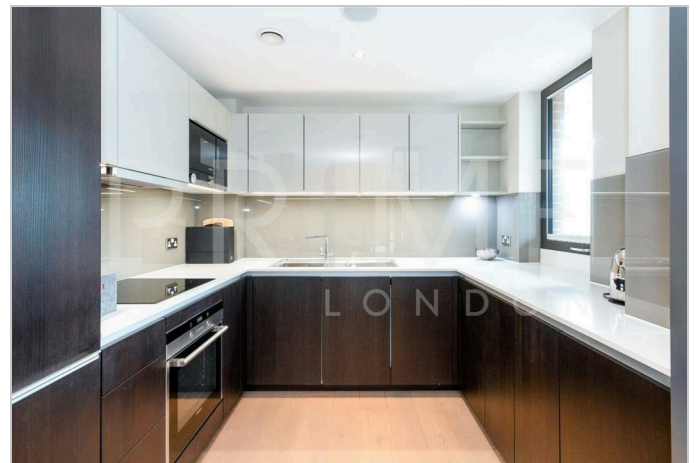
- Beautifully maintained ▪ Two bedrooms, two modern apartment bathrooms
- Huge private terrace ▪ Fully furnished
- Excellent modern ▪ Lift within block development

A spacious two double bedroom apartment, with huge private terrace and further communal roof terrace, is available for lease through Prime London.

The property is beautifully presented, with a contemporary open plan living and kitchen area with access to the terrace. The two bedrooms are roughly equally sized, with built-in storage, and the master bedroom also has an en-suite shower room.

Zeiss Court is a small development offering a larger degree of privacy, and is situated on a quiet side street despite its central location.

The surrounding area is one of London's most vibrant, with The Cut, Lower March, Bankside, The London Eye and a long list of other major London attractions within easy reach. The transport links are also excellent with Blackfriars Road, Southwark station, Waterloo station, Waterloo East and the City close by.



These particulars, whilst believed to be accurate are set out as a general outline only for guidance and do not constitute any part of an offer or contract. Intending purchasers should not rely on them as statements of representation of fact, but must satisfy themselves by inspection or otherwise as to their accuracy. No person in this firm's employment has the authority to make or give any representation or warranty in respect of the property.