

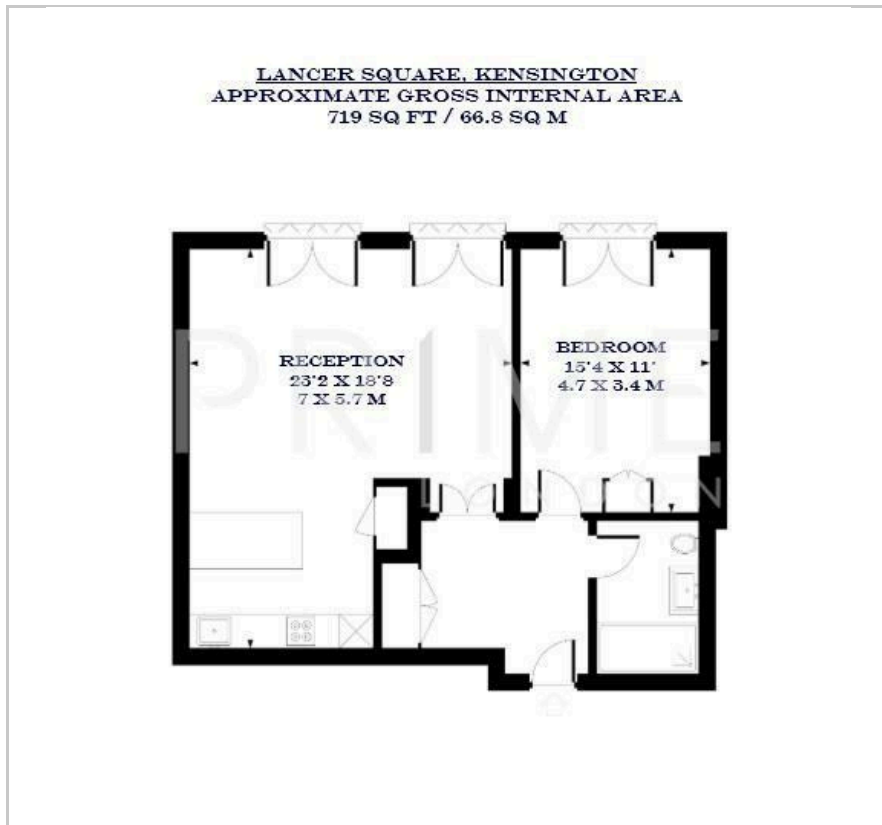
1 Lancer Square

Kensington, W8 4AX

£1,800 Per Week



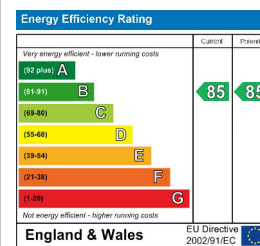
Floor Plan



Area Map



Energy Efficiency Graph



Viewing

By appointment. Contact us on 0207 052 1075 if you wish to arrange a viewing appointment for this property, or require further information.

- One bedroom apartment
- 719 sq ft (66.8 sqm)
- Located in the heart of Kensington
- Luxurious marble bathroom
- Residents' pool, spa, gym and 24 hour concierge
- valet parking

This exquisite one bedroom apartment, located in the highly sought after Lancer Square development, is available for lease through Prime London.

Offering 719 sq ft (66.8 sqm) of living space, the property boasts an open-plan kitchen and living area, a spacious double bedroom, a luxurious marble bathroom, and generous storage throughout.

Lancer Square is home to 36 bespoke residences, each meticulously crafted to the highest standards of luxury. Residents enjoy exceptional amenities, including a 24 hour concierge, a swimming pool, spa, massage room, studio, and gym. The development also features a beautifully landscaped courtyard, valet parking, and a striking grand entrance with lifts throughout.

Ideally situated adjacent to Kensington Palace Green, the property benefits from proximity to the lush green spaces of Kensington Gardens and Hyde Park. The vibrant boutiques, cafes, restaurants, and bars of Kensington Church Street and High Street Kensington are just moments away.

For easy access to the City, High Street Kensington Station is a mere 0.2 miles from the property, offering regular underground trains and bus services.



These particulars, whilst believed to be accurate are set out as a general outline only for guidance and do not constitute any part of an offer or contract. Intending purchasers should not rely on them as statements of representation of fact, but must satisfy themselves by inspection or otherwise as to their accuracy. No person in this firm's employment has the authority to make or give any representation or warranty in respect of the property.