



Eaton Mews North

Belgravia, SW1X 8LL

£3,500 Per Week



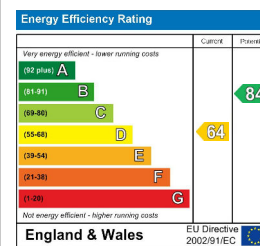
Floor Plan



Area Map



Energy Efficiency Graph



Viewing

By appointment. Contact us on 0207 052 1075 if you wish to arrange a viewing appointment for this property, or require further information.

- Exceptional five bedroom ▪ 3,268 sq ft (303.6 sqm) house
- Furnished ▪ Juliet balcony
- Quiet mews ▪ Off street parking

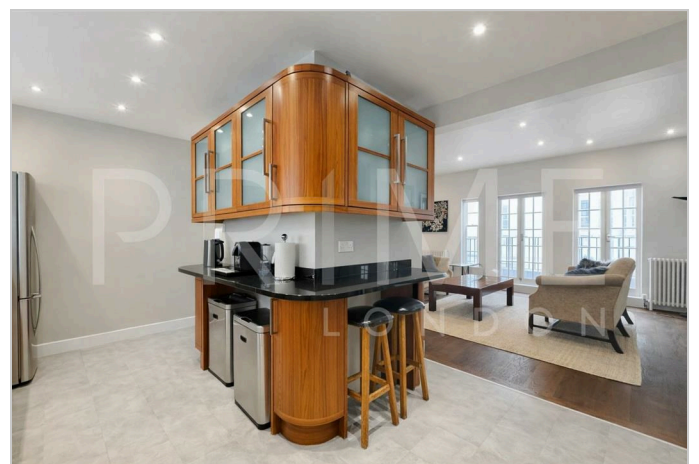
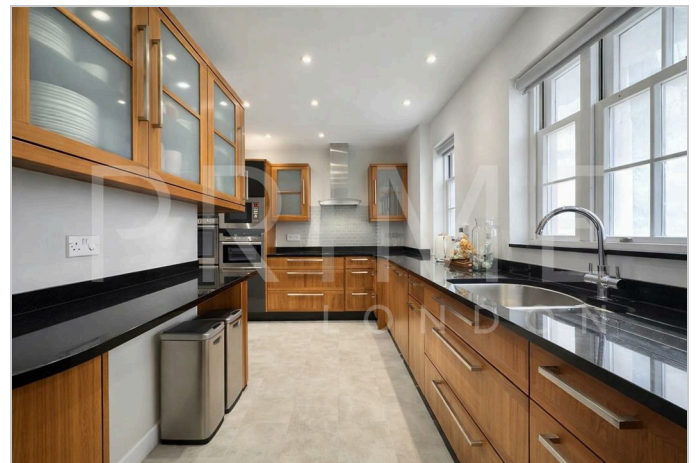
This luxurious five bedroom house, located in the highly prestigious area of Belgravia is available for lease through Prime London.

Totalling 3,268 sq ft (303.6 sqm), the property boasts a generous open plan reception with French windows and a Juliet balcony, as well as a fully fitted kitchen with integrated appliances.

Set across four floors, the property offers five large bedrooms, two of which feature their own ensembles and built in storage space, as well as five modern and sleek bathrooms. The multipurpose basement floor can be used as a second reception, gym, office or games room. This house also provides a small garage and offers a Mews Residents Parking.

Positioned in the highly sought after area of Belgravia, the apartment has easy access to some of London's best restaurants, cafes and boutiques.

For transport, Sloane Square station is just a short walk away and provides excellent transport links across the city.



These particulars, whilst believed to be accurate are set out as a general outline only for guidance and do not constitute any part of an offer or contract. Intending purchasers should not rely on them as statements of representation of fact, but must satisfy themselves by inspection or otherwise as to their accuracy. No person in this firm's employment has the authority to make or give any representation or warranty in respect of the property.