

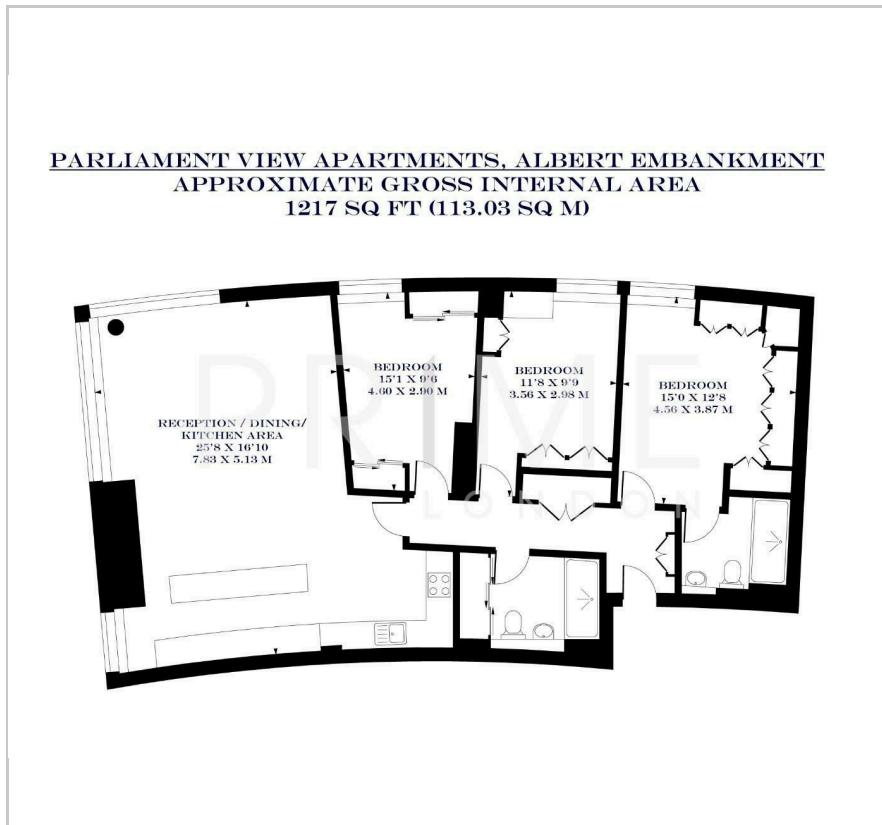
Parliament View Apartments

1 Albert Embankment, SE1 7XH

Asking Price £1,250,000



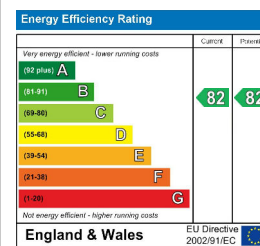
Floor Plan



Area Map



Energy Efficiency Graph



Viewing

By appointment. Contact us on 0207 928 6663 if you wish to arrange a viewing appointment for this property, or require further information.

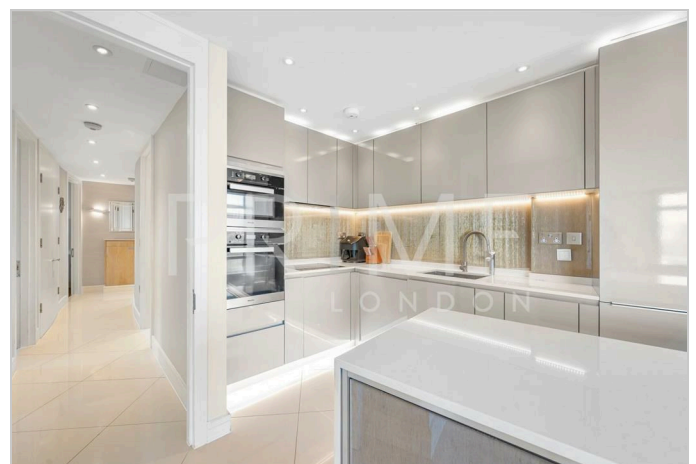
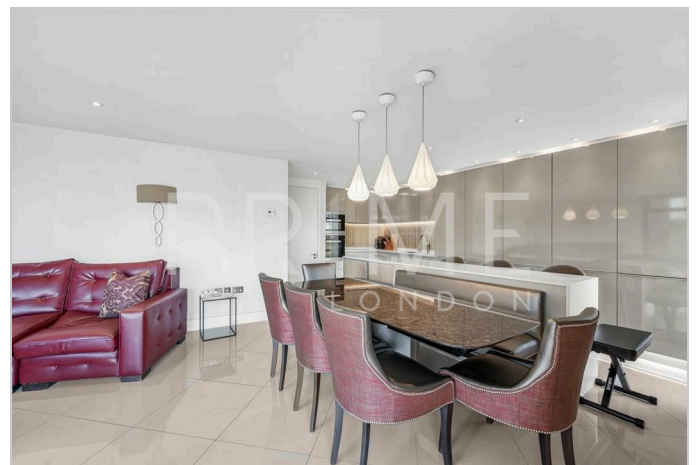
- Stunning three bedroom ▪ 1,217 sq ft (113.03 sqm) apartment
- Iconic views of the River ▪ Secure parking space Thames
- 24 hour concierge service ▪ Residents' gymnasium

This fully refurbished three bedroom, two bathroom apartment spanning 1,217 sq ft (113.03 sqm) within the well sought after Parliament View Apartments development, with secure parking, is available for chain free sale exclusively through Prime London.

The apartment comprises a bright reception with exceptional views of the River Thames, an open fully fitted kitchen with Neff appliances, a primary bedroom with dressing area, substantial storage and en suite bathroom, a further two double bedrooms, and a separate family bathroom.

Parliament View itself offers a 24 hour concierge service, residents' gymnasium and an excellent location on the river between Lambeth and Vauxhall Bridge. As a result the development is within easy reach of the West End, Westminster, the City and South Bank.

Waterloo and Vauxhall rail and underground station are also both within walking distance of the property, making it easily accessible from all locations.



These particulars, whilst believed to be accurate are set out as a general outline only for guidance and do not constitute any part of an offer or contract. Intending purchasers should not rely on them as statements of representation of fact, but must satisfy themselves by inspection or otherwise as to their accuracy. No person in this firm's employment has the authority to make or give any representation or warranty in respect of the property.