

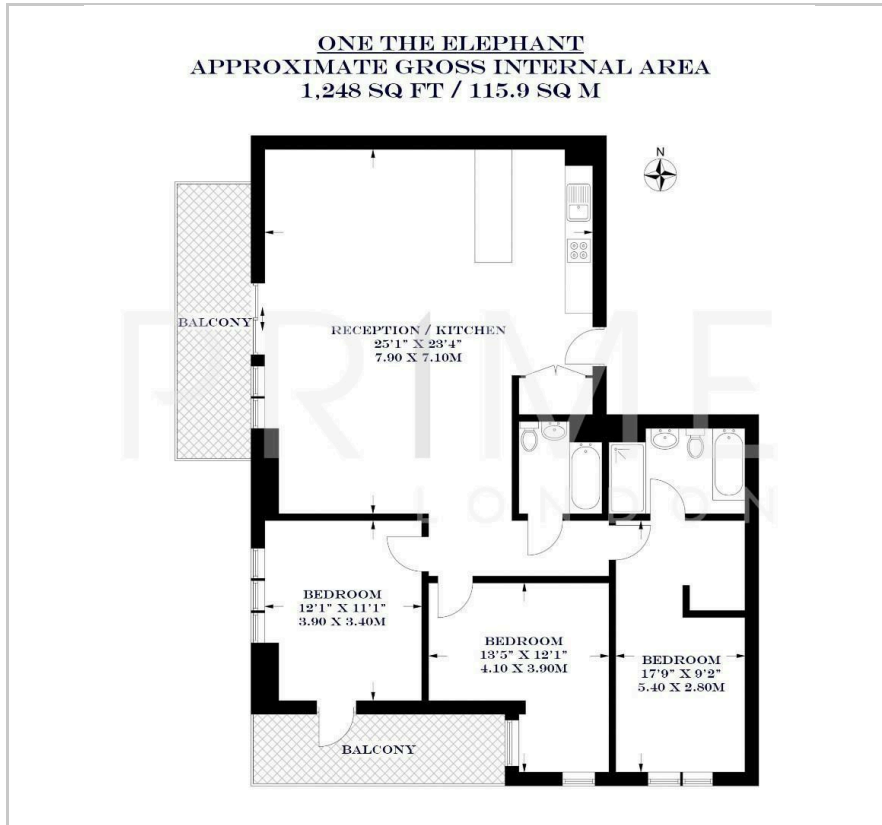
One The Elephant

1 St. Gabriel Walk, Elephant and Castle, SE1 6FD

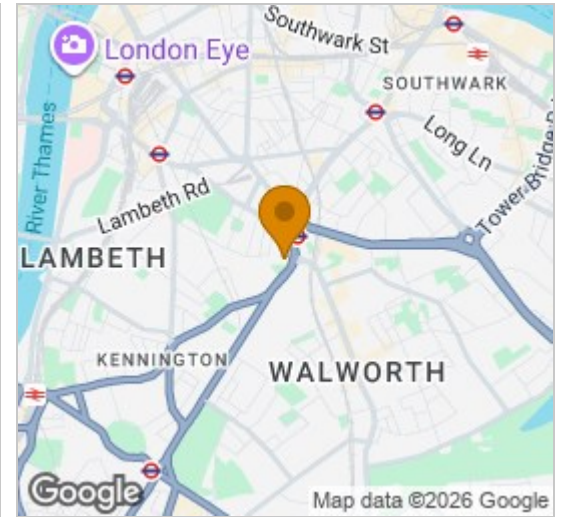
Asking Price £1,300,000



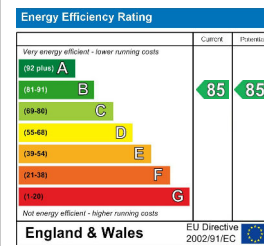
Floor Plan



Area Map



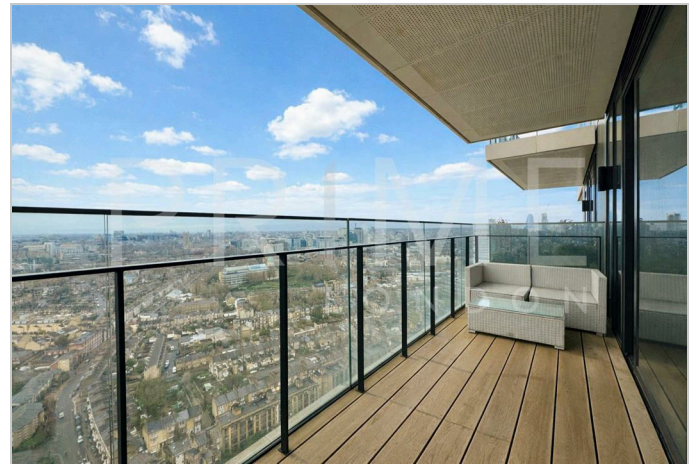
Energy Efficiency Graph



Viewing

By appointment. Contact us on 0207 928 6663 if you wish to arrange a viewing appointment for this property, or require further information.

- Three bedroom apartment
- 1,248 sq ft (115.9 sqm)
- Views of the London Eye
- Parking space
- Two private balconies
- 24 hour concierge

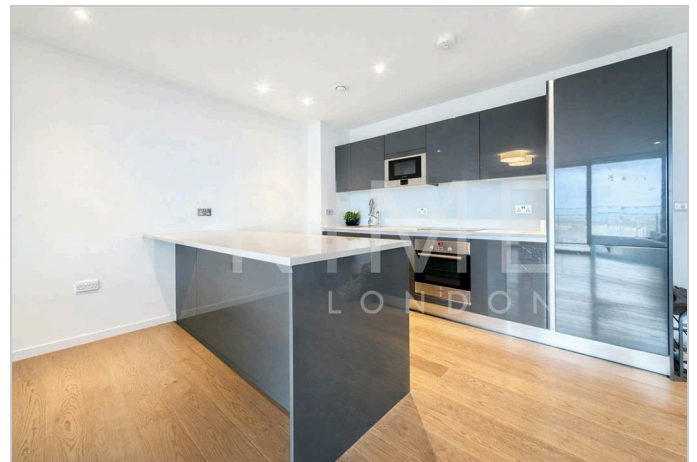


Situated high above the city skyline, this stylish three bedroom apartment spanning 1,248 sq ft (115.9 sqm) offers stunning views of London, includes a dedicated parking space, and is available for sale through Prime London.

The property offers both sophistication and comfort in one of London's most dynamic neighborhoods. The apartment features a large open-plan reception and kitchen area, ideal for both entertaining and everyday living.

The modern kitchen is fully integrated and provides ample space to dine, creating a seamless living experience. There are three spacious double bedrooms, each finished to a high standard. The principal bedroom includes access to a private balcony, offering far-reaching views and a tranquil spot to unwind. Two sleek bathrooms (one ensuite) complement the stylish layout, enhancing both functionality and elegance. The building also has a 24 hour concierge service.

Ideally located, One The Elephant is moments from the vibrant heart of Elephant & Castle, with an exceptional range of shops, bars, and restaurants just outside your door. The area also boasts excellent transport links, providing easy access to Central London and beyond.



These particulars, whilst believed to be accurate are set out as a general outline only for guidance and do not constitute any part of an offer or contract. Intending purchasers should not rely on them as statements of representation of fact, but must satisfy themselves by inspection or otherwise as to their accuracy. No person in this firm's employment has the authority to make or give any representation or warranty in respect of the property.