

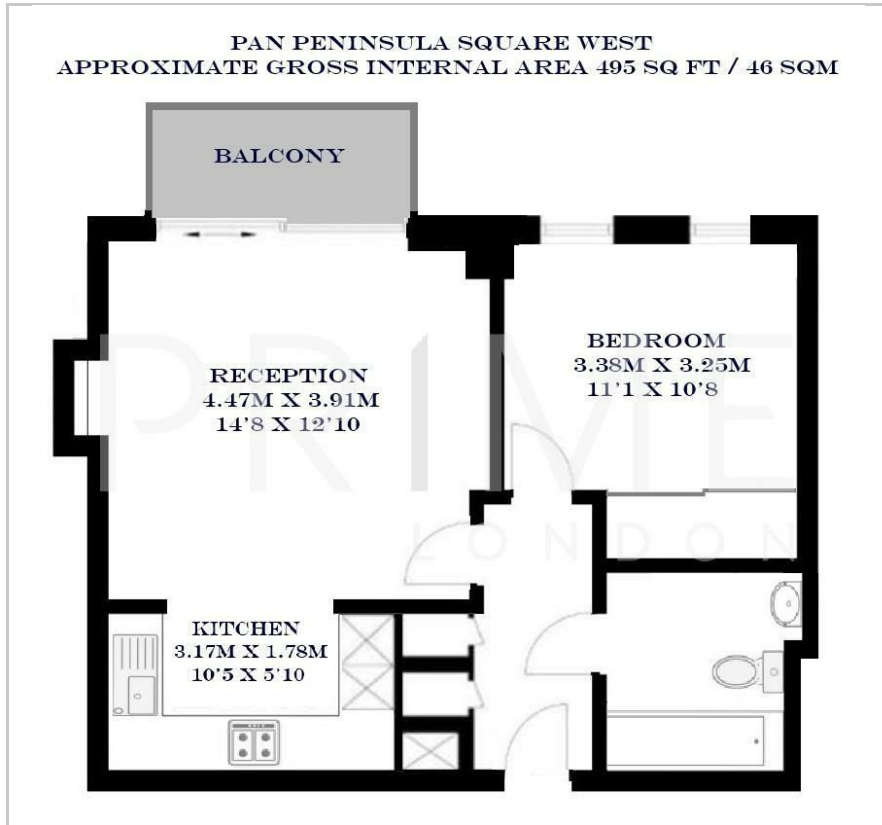


## Pan Peninsula Square West

1 Pan Peninsula Square, Canary Wharf, E14 9HJ

Offers In Excess Of £425,000

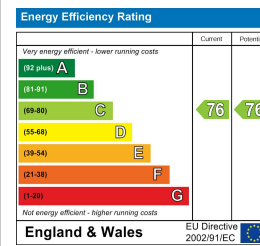
## Floor Plan



## Area Map



## Energy Efficiency Graph



## Viewing

By appointment. Contact us on 0207 928 6663 if you wish to arrange a viewing appointment for this property, or require further information.

- One bedroom apartment
- Far-reaching views
- Cinema room
- 495 sq ft (46 sqm)
- Residents' gym and pool
- 24 hour concierge

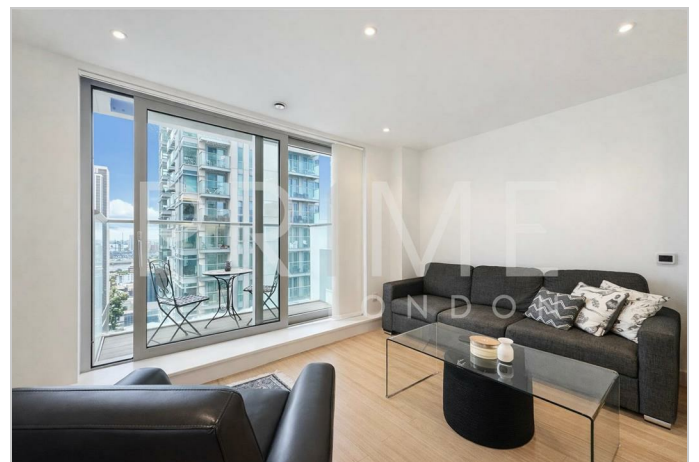


This stunning one bedroom apartment, spanning 495 sq ft (46 sqm) within the well sought-after Pan Peninsula Square development in Canary Wharf, is available for sale through Prime London.

The property offers a spacious open-plan reception and kitchen area with floor-to-ceiling windows, with direct access to a private balcony offering views of the river and towards the O2. The double is well-proportioned, accommodating a double bed as well as built-in storage. A modern bathroom is located off the hallway, alongside additional storage provisions.

Residents enjoy access to outstanding on-site facilities, including a 24 hour concierge, exclusive gym, swimming pool, cinema and residents' lounge.

Ideally located in Canary Wharf, Europe's pre-eminent financial hub, Pan Peninsula is within a few minutes walk of central Canary Wharf and enjoys unparalleled transport connections. These include the Jubilee Line, Crossrail, Docklands Light Railway, Thames Clipper boat services and European flights via London City Airport.



These particulars, whilst believed to be accurate are set out as a general outline only for guidance and do not constitute any part of an offer or contract. Intending purchasers should not rely on them as statements of representation of fact, but must satisfy themselves by inspection or otherwise as to their accuracy. No person in this firm's employment has the authority to make or give any representation or warranty in respect of the property.