

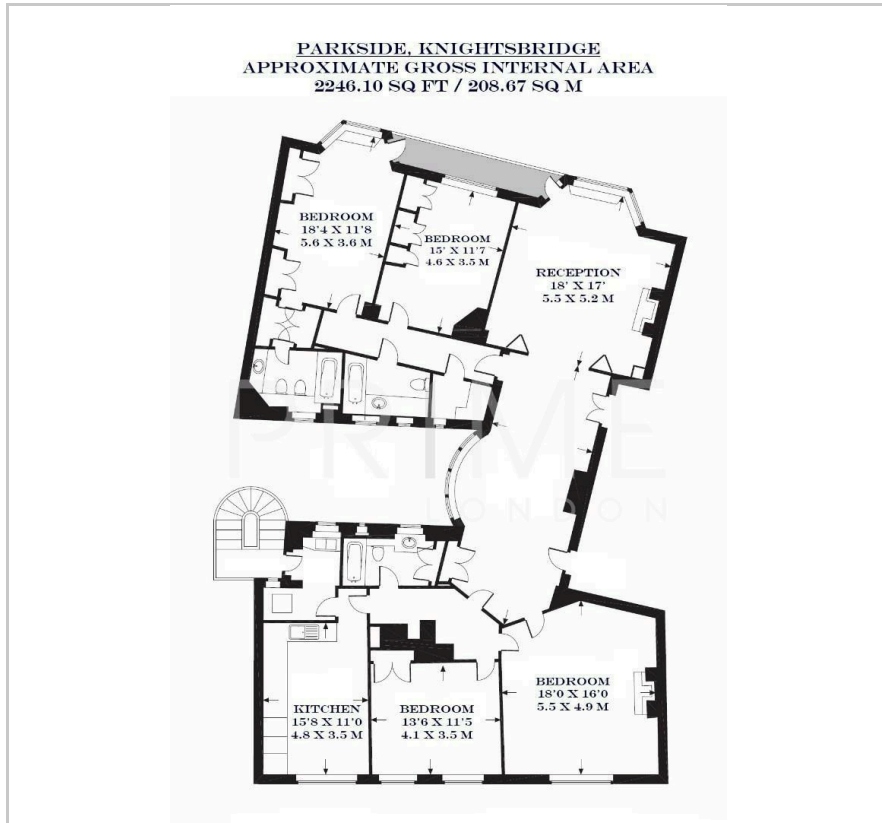
Parkside

Knightsbridge, SW1X 7JW

£3,400 Per Week



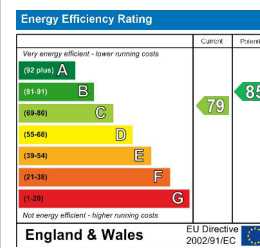
Floor Plan



Area Map



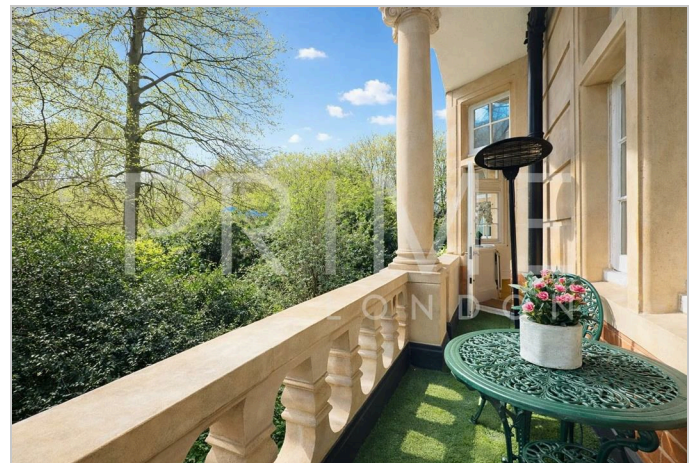
Energy Efficiency Graph



Viewing

By appointment. Contact us on 0207 052 1075 if you wish to arrange a viewing appointment for this property, or require further information.

- Exceptional four bedroom ▪ 2,246 sq ft (209 sq m) apartment
- Private terrace overlooking Hyde Park ▪ Fully fitted kitchen
- Sought after Knightsbridge ▪ 24-hour porter location



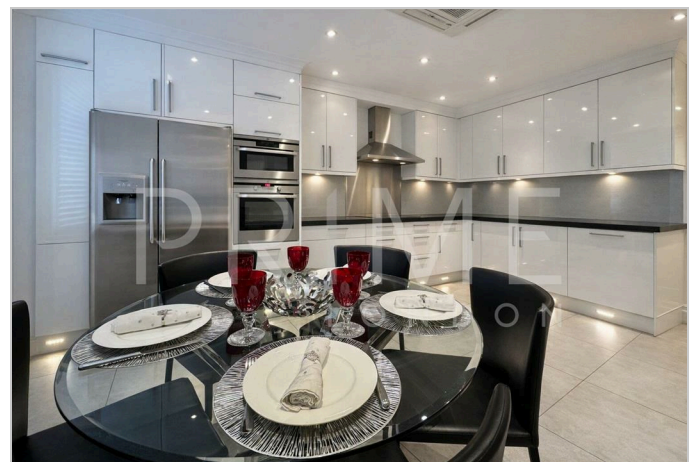
This exceptional four bedroom apartment, located in the prestigious area of Knightsbridge, is available for lease through Prime London.

Totalling 2,246 sq ft (209 sq m), the apartment boasts a generous open plan reception with access to a private terrace overlooking Hyde Park. All four bedrooms are spacious and offer built in wardrobe spaces. The master bedroom features a walk in wardrobe and a sleek and contemporary ensuite. The kitchen is fully fitted with premium, integrated appliances.

The apartment also benefits from a 24 hour porter and modern lifts.

Positioned in the heart of Knightsbridge, residents have easy access to some of London's best restaurants, cafes and boutiques.

For transport, Parkside Apartments are just a short walk away from Knightsbridge and Hyde Park Corner stations, which have excellent transport links across the city.



These particulars, whilst believed to be accurate are set out as a general outline only for guidance and do not constitute any part of an offer or contract. Intending purchasers should not rely on them as statements of representation of fact, but must satisfy themselves by inspection or otherwise as to their accuracy. No person in this firm's employment has the authority to make or give any representation or warranty in respect of the property.