



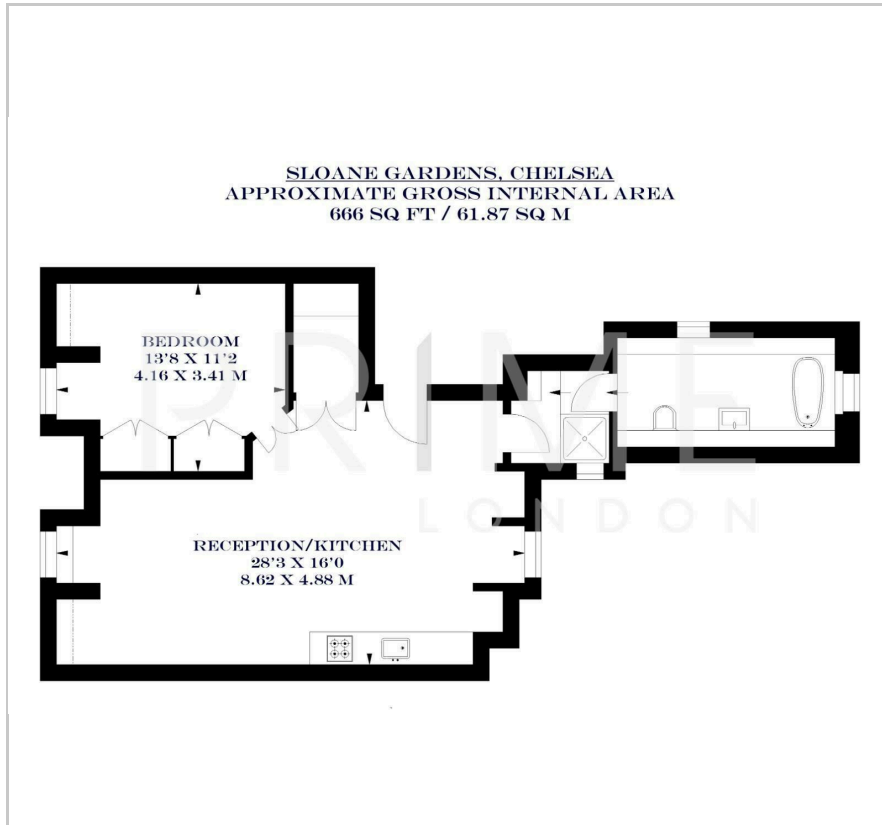
24 Sloane Gardens

Sloane Square, SW1W 8DJ

£1,385 Per Week



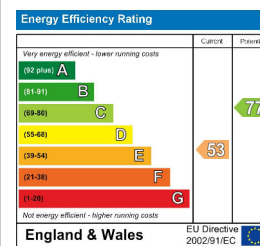
Floor Plan



Area Map



Energy Efficiency Graph



Viewing

By appointment. Contact us on 0207 052 1075 if you wish to arrange a viewing appointment for this property, or require further information.

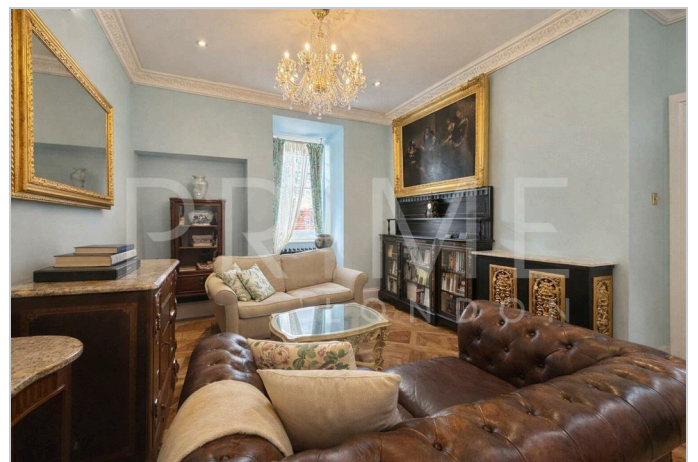
- Exceptional one bedroom ▪ 666 sq ft (61.87 sqm) apartment
- Tastefully decorated ▪ High ceilings
- Open plan reception ▪ Fully fitted kitchen

This exceptional one bedroom apartment, located in the highly sought after neighbourhood of Chelsea, is available for short term lease through Prime London.

Totalling 666 sq ft (61.87 sqm), the property boasts a generous open plan reception and fully fitted kitchen with integrated appliances. A key feature of this property is the traditional and unique interior design, that provides both character and comfortable, modern living. The apartment offers high ceilings and large windows allowing for excellent natural light throughout.

The apartment is situated within the impressive red brick building, 24 Sloane Gardens, which has easy access to some of London's best restaurants, cafes and boutiques.

For transport, Sloane Square station is just a stone's throw away and provides excellent transport links across the city.



These particulars, whilst believed to be accurate are set out as a general outline only for guidance and do not constitute any part of an offer or contract. Intending purchasers should not rely on them as statements of representation of fact, but must satisfy themselves by inspection or otherwise as to their accuracy. No person in this firm's employment has the authority to make or give any representation or warranty in respect of the property.