



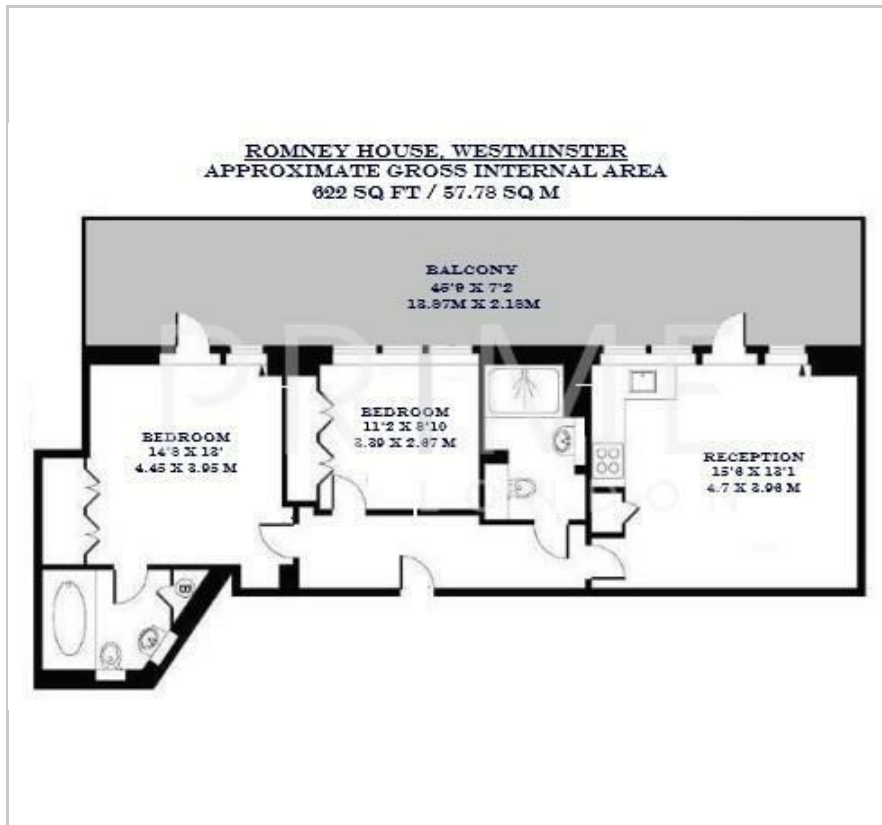
## Romney House

47 Marham Street, Westminster, SW1P 3DS

£850 Per Week



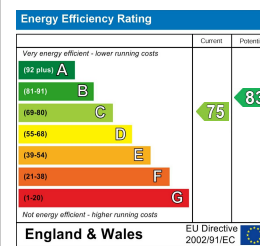
## Floor Plan



## Area Map



## Energy Efficiency Graph



## Viewing

By appointment. Contact us on 0207 052 1075 if you wish to arrange a viewing appointment for this property, or require further information.

- Secure underground parking
- Full length private terrace with views of Big Ben
- 622 sq ft (57.78 sqm)
- Residents' gym and communal gardens
- Walking Distance to St James's Park, Westminster & Victoria stations
- 24 hour concierge

Spanning approximately 622 sq ft (57.78 sqm), this apartment comes fully furnished to a high standard, includes a secure underground parking space, and is available to lease through Prime London.

The bright, open-plan living area is complemented by windows that open onto the expansive private terrace, framing iconic views of Westminster and Big Ben.

Residents of Romney House benefit from a range of premium amenities, including a 24 hour concierge, a well-equipped on-site gym, and communal courtyard gardens.

Situated on Marsham Street, the development places you moments from some of London's most revered landmarks, such as the Houses of Parliament, Westminster Abbey, and Tate Britain.

Transport connections are excellent, with St James's Park Underground Station less than a 10-minute walk away, and Victoria Station, offering mainline rail, Underground, and coach services, is just over 15 minutes walking distance.



These particulars, whilst believed to be accurate are set out as a general outline only for guidance and do not constitute any part of an offer or contract. Intending purchasers should not rely on them as statements of representation of fact, but must satisfy themselves by inspection or otherwise as to their accuracy. No person in this firm's employment has the authority to make or give any representation or warranty in respect of the property.