

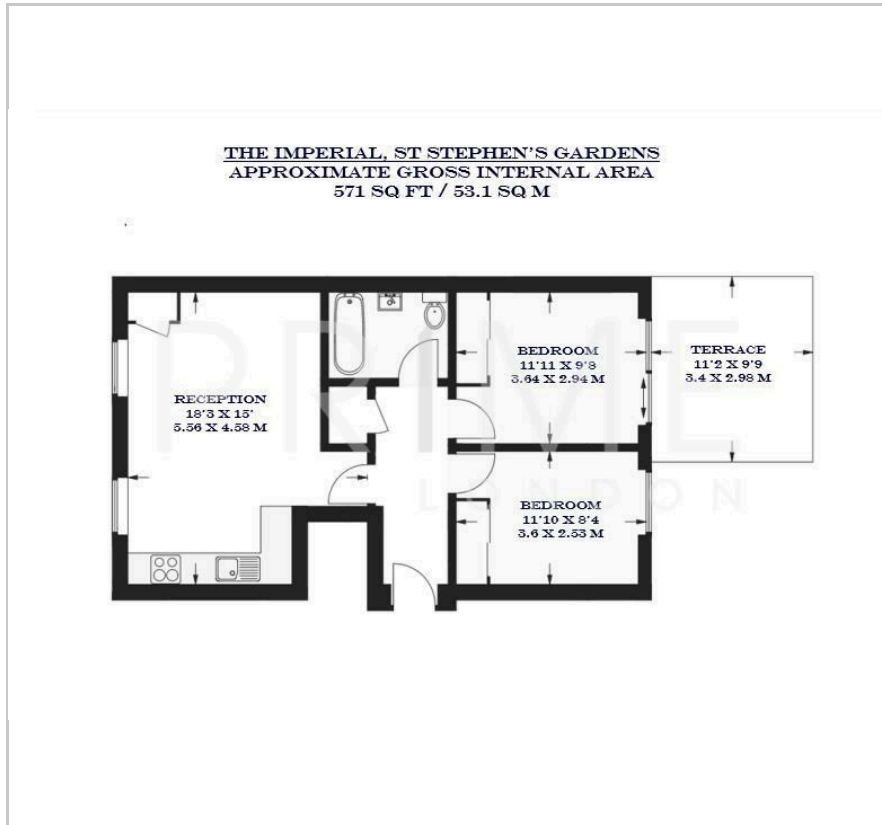
33 St Stephen's Gardens

Notting Hill, W2 5NA

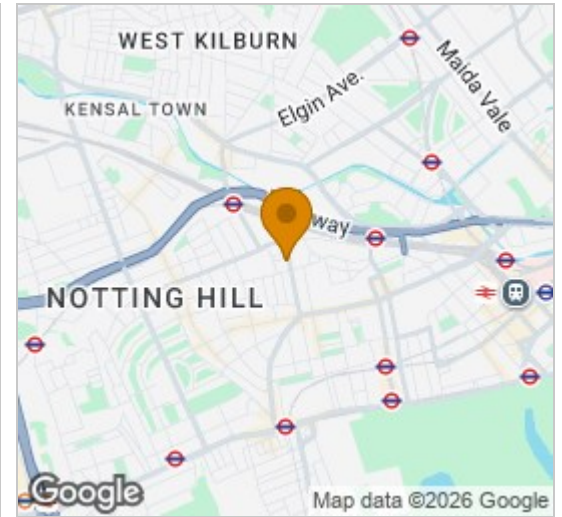
Asking Price £778,000



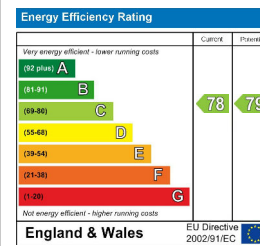
Floor Plan



Area Map



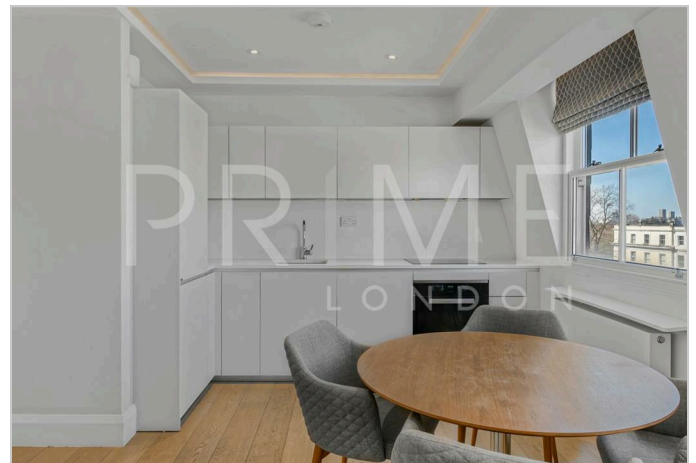
Energy Efficiency Graph



Viewing

By appointment. Contact us on 0207 052 1075 if you wish to arrange a viewing appointment for this property, or require further information.

- Two bedroom apartment ▪ 571 sq ft (53.1 sqm)
- Located in the heart of Notting Hill ▪ Large private terrace
- Access to beautiful landscaped gardens ▪ Concierge services



This exceptional two bedroom apartment, nestled in the heart of St. Stephen's Gardens, Notting Hill is available for chain free sale through Prime London.

Thoughtfully designed and spanning across 571 sq ft (53.1 sqm), the property features two generously sized double bedrooms, one luxurious bathroom, and a spacious reception room perfect for those seeking refined city living. The property also features a large private terrace accessible through the main bedroom.

Part of an exclusive boutique development, this beautifully crafted residence benefits from concierge services, lift access, and access to serene communal gardens.

Set in a prime location, the apartment enjoys excellent transport links and is surrounded by an array of high-end restaurants, boutique shops, and cultural landmarks.



These particulars, whilst believed to be accurate are set out as a general outline only for guidance and do not constitute any part of an offer or contract. Intending purchasers should not rely on them as statements of representation of fact, but must satisfy themselves by inspection or otherwise as to their accuracy. No person in this firm's employment has the authority to make or give any representation or warranty in respect of the property.