

Valentine House

2 Sands End Lane, Kings Road Park, SW6 2QH

£950 Per Week



2



2

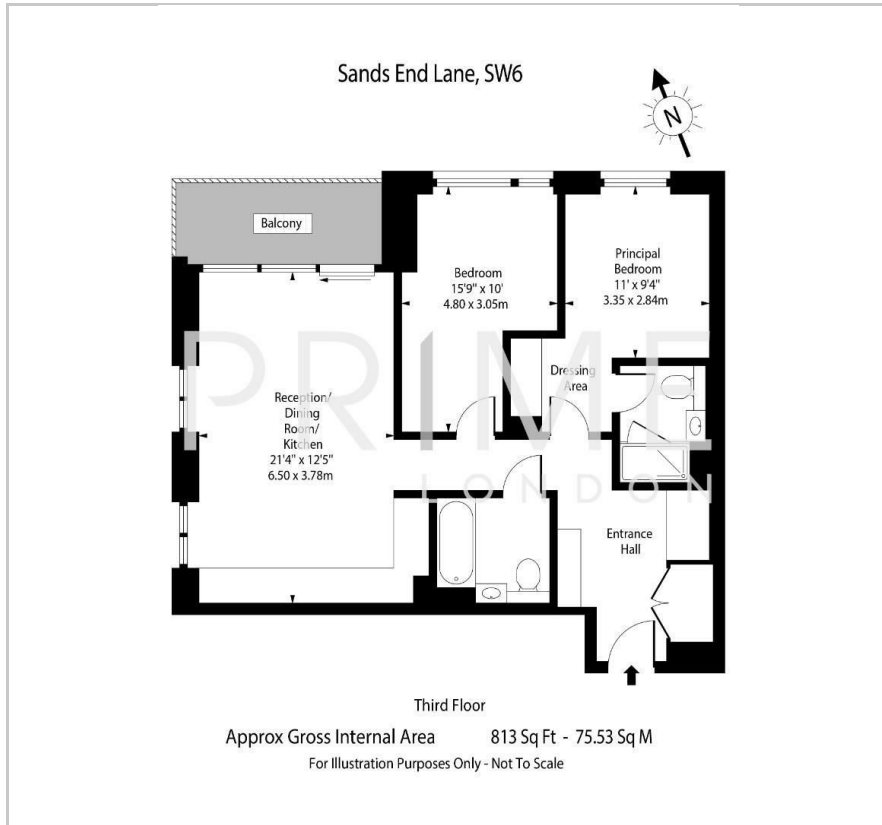


1

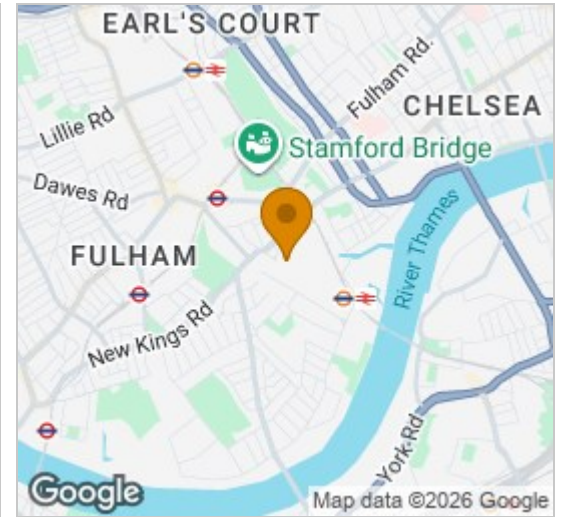


B

Floor Plan



Area Map



Energy Efficiency Graph



Viewing

By appointment. Contact us on 0207 052 1075 if you wish to arrange a viewing appointment for this property, or require further information.

- Large balcony
- 813 sq ft (75.5 sqm)
- Swimming pool, gym
- Furnished
- 24 hour concierge
- Virtual golf, Cinema



A spacious two bedroom apartment measuring 813 sq ft (75.5 sqm), overlooking the beautifully landscaped internal gardens, available for lease through Prime London within the desirable Kings Road Park development.

The apartment features a bright and inviting open-plan living area, leading out to a private balcony with views across the expertly designed residents' gardens. The contemporary, fully fitted kitchen is finished to a high standard, boasting integrated Miele appliances, composite stone worktops, and premium fixtures and fittings.

Both bedrooms are generously sized and benefit from bespoke fitted wardrobes, with the principal bedroom enjoying a well-appointed en suite. A separate family bathroom serves the second bedroom.

The property further benefits from underfloor heating and comfort cooling throughout, offering a high specification and beautifully finished home.

Residents of Kings Road Park enjoy access to exceptional on-site amenities, including a 24-hour concierge and security, as well as a state-of-the-art spa featuring a swimming pool, gymnasium, sauna, and steam room. Additional facilities include sports massage services, personal training, a golf simulator, retro games room, meeting and study rooms, and a private dining area.



These particulars, whilst believed to be accurate are set out as a general outline only for guidance and do not constitute any part of an offer or contract. Intending purchasers should not rely on them as statements of representation of fact, but must satisfy themselves by inspection or otherwise as to their accuracy. No person in this firm's employment has the authority to make or give any representation or warranty in respect of the property.