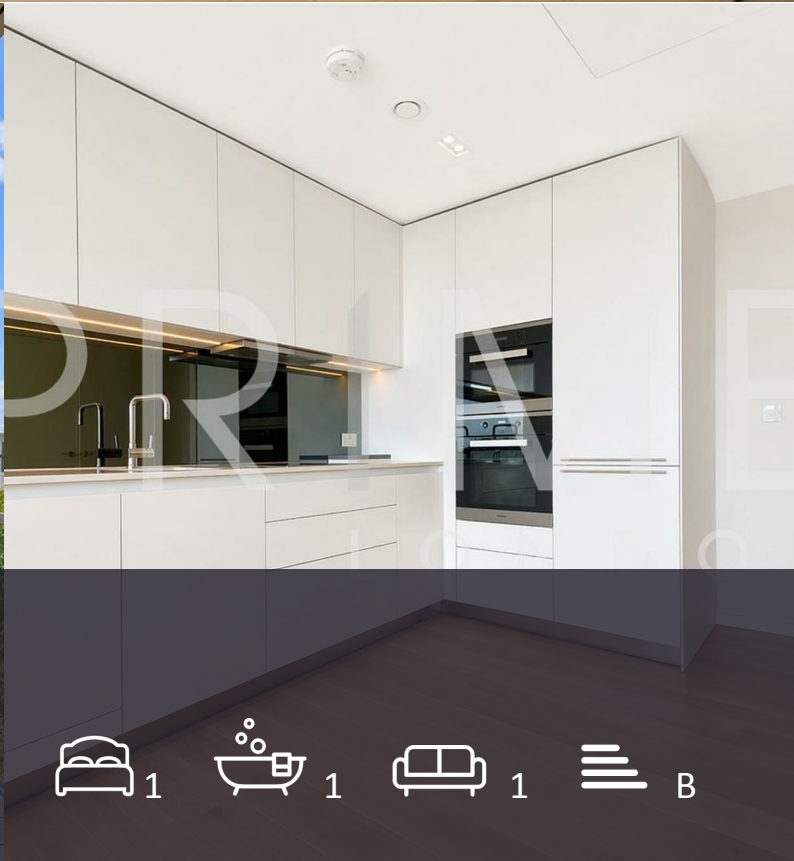




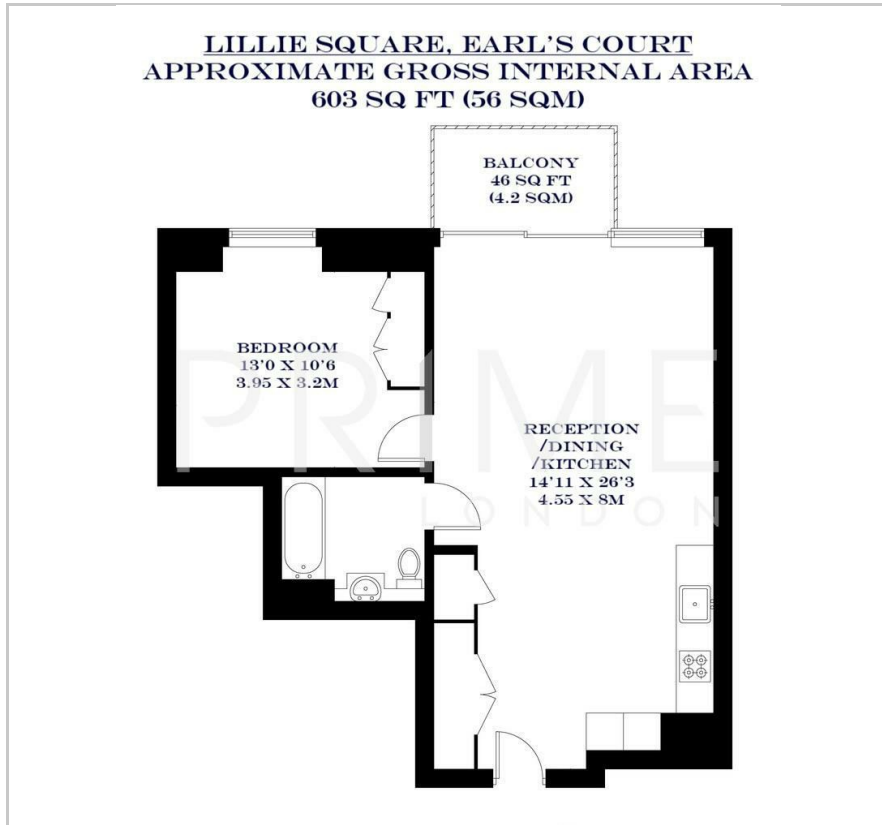
7 Lillie Square

West Brompton, SW6 1GD

Asking Price £625,000



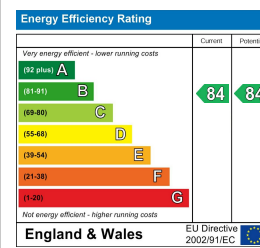
## Floor Plan



## Area Map



## Energy Efficiency Graph



## Viewing

By appointment. Contact us on 0207 052 1075 if you wish to arrange a viewing appointment for this property, or require further information.

- Stunning one bedroom ▪ 603 sq ft (56 sqm) apartment
- Chain free
- Private balcony and floor to ceiling windows
- 24 hour concierge
- Residents' gym, spa and pool

This pristine one bedroom apartment, located within the prestigious Lillie Square development, is available for chain free sale through Prime London.

Extending to 603 sq ft (56 sqm), the property features a spacious open plan reception and kitchen, with large windows allowing for excellent natural light throughout. The bedroom benefits from built in storage, and the apartment is complemented by a modern bathroom, along with comfort cooling and underfloor heating.

Residents enjoy access to premium amenities, including a gym, swimming pool, spa facilities, and a 24 hour concierge service.

Lillie Square is ideally positioned moments from West Brompton Station and within easy reach of Fulham and Chelsea, offering a wide selection of cafés, restaurants, and local amenities nearby.



These particulars, whilst believed to be accurate are set out as a general outline only for guidance and do not constitute any part of an offer or contract. Intending purchasers should not rely on them as statements of representation of fact, but must satisfy themselves by inspection or otherwise as to their accuracy. No person in this firm's employment has the authority to make or give any representation or warranty in respect of the property.