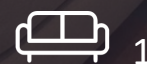




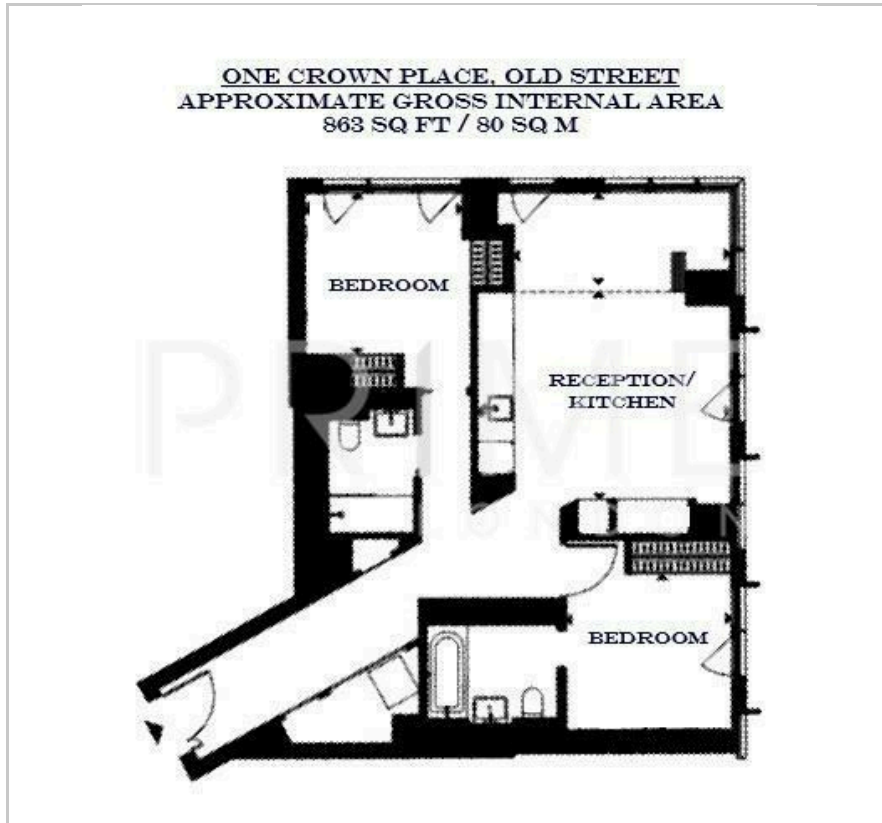
One Crown Place

19 Sun Street, Shoreditch, EC2A 2FJ

£1,195,000



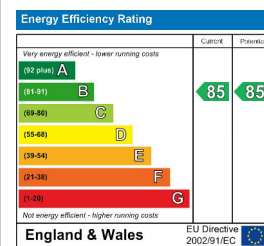
Floor Plan



Area Map



Energy Efficiency Graph



Viewing

By appointment. Contact us on 0207 052 1075 if you wish to arrange a viewing appointment for this property, or require further information.

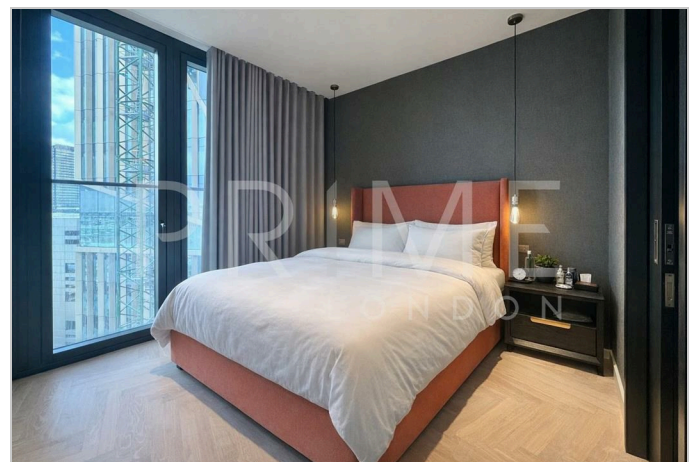
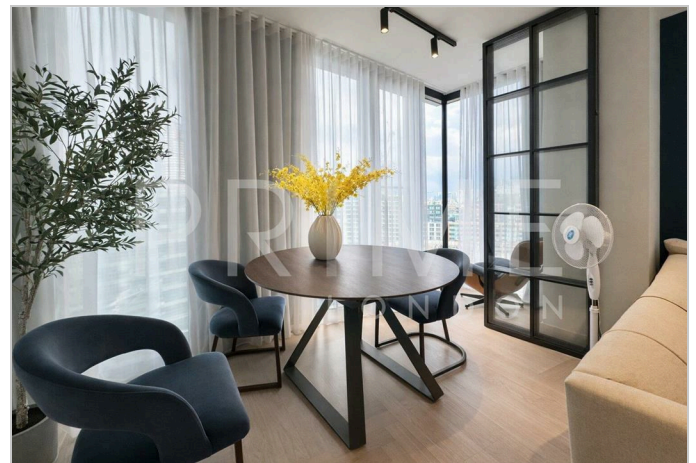
- Exceptional two bedroom apartment
- 963 sq ft (80 sq m)
- Winter garden
- Residents only gym, cinema and terrace
- Open plan reception/kitchen
- 24-hour concierge

This exceptional two bedroom apartment, located in the highly sought after One Crown Place, is available for chain free sale through Prime London.

Totalling 963 sq ft (80 sqm), the property boasts a generous open plan reception area and fully fitted kitchen with integrated appliances. A key feature of this apartment is the winter garden, which showcases floor to ceiling windows, allowing for excellent natural light throughout. Both bedrooms are large with built in wardrobe space and underfloor heating and cooling systems. The master bedroom benefits from an ensuite and oak herringbone flooring.

The property is situated within One Crown Place, which offers its residents a private gym, cinema, terrace, and 24 hour concierge services.

For transport, One Crown Place is just a short walk away from Liverpool Street Station, which offers excellent transport links across the city and beyond.



These particulars, whilst believed to be accurate are set out as a general outline only for guidance and do not constitute any part of an offer or contract. Intending purchasers should not rely on them as statements of representation of fact, but must satisfy themselves by inspection or otherwise as to their accuracy. No person in this firm's employment has the authority to make or give any representation or warranty in respect of the property.