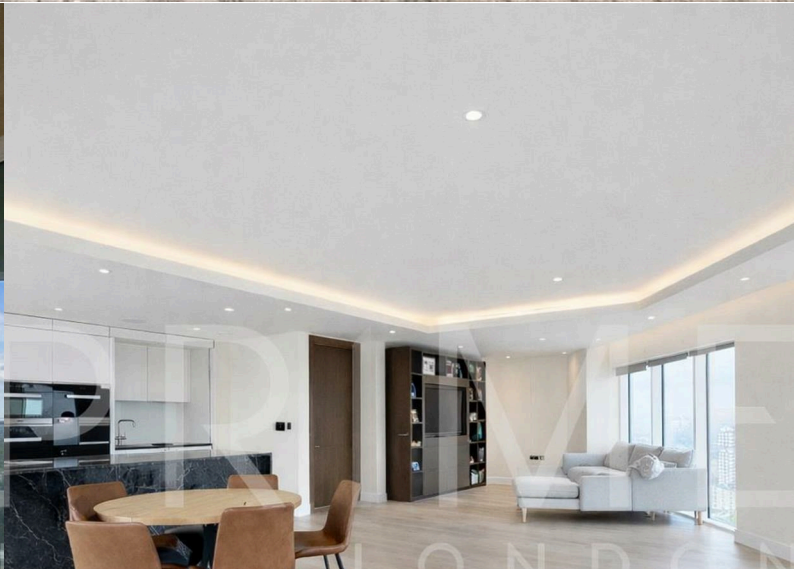




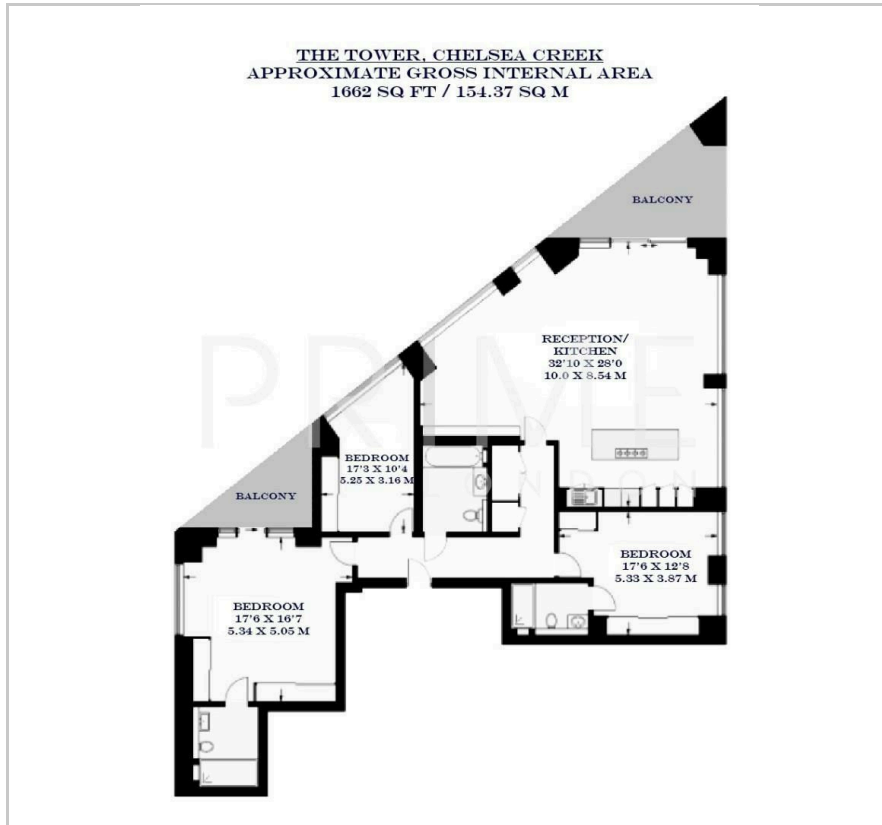
The Tower

12 Park Street, Chelsea Creek, SW6 2RQ

£2,500,000



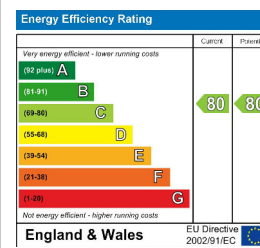
Floor Plan



Area Map



Energy Efficiency Graph



Viewing

By appointment. Contact us on 0207 052 1075 if you wish to arrange a viewing appointment for this property, or require further information.

- Exceptional three bedroom ▪ 1,662 sq ft (154.37 sq m) apartment
- Private parking space ▪ Two private balconies included
- Residents only gym, ▪ 24 hour concierge swimming pool and cinema room

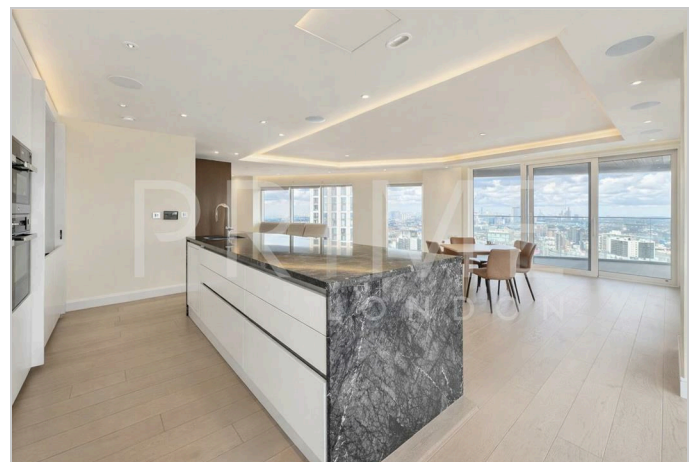
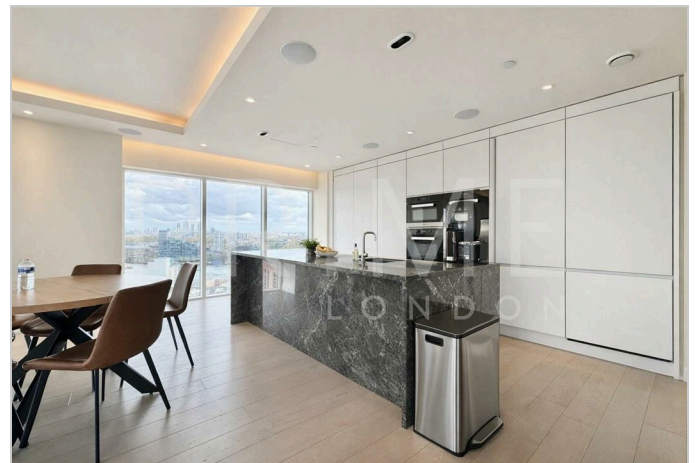
This exceptional three bedroom apartment, located in the highly sought after Chelsea Creek development, is available for chain free sale through Prime London.

Totalling 1,662 sq ft (154.37 sqm) the property boasts a generous open plan reception and kitchen area with floor to ceiling windows, allowing for excellent natural light throughout. All three bedrooms are modern and spacious with built-in wardrobe storage areas. The master bedroom showcases a sleek ensuite, with access to one of the private balconies. This apartment also benefits from a secure parking space.

The Tower building is located within the highly sought after Chelsea Creek development, which offers residents a private gym, swimming pool, cinema room and 24-hour concierge.

Located in the prestigious area of Chelsea, the apartment is just a short walk away from some of London's best restaurants, cafes and boutiques located on the popular King's Road.

For transportation, Imperial Wharf station is located a stone's throw from the development, and offers excellent transport links across the city.



These particulars, whilst believed to be accurate are set out as a general outline only for guidance and do not constitute any part of an offer or contract. Intending purchasers should not rely on them as statements of representation of fact, but must satisfy themselves by inspection or otherwise as to their accuracy. No person in this firm's employment has the authority to make or give any representation or warranty in respect of the property.