

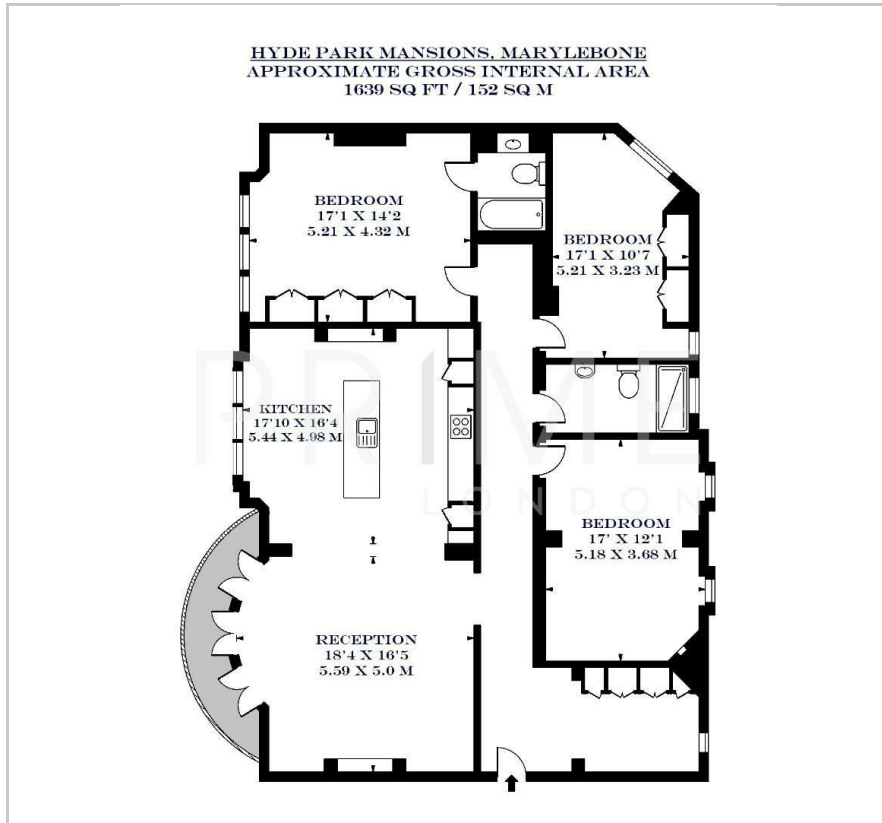


Hyde Park Mansions

Cabbell Street, Marylebone, NW1 5BQ

£1,269 Per Week

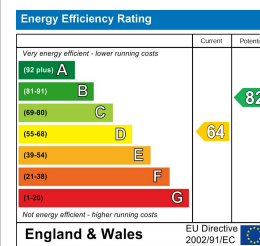
Floor Plan



Area Map



Energy Efficiency Graph



Viewing

By appointment. Contact us on 0207 052 1075 if you wish to arrange a viewing appointment for this property, or require further information.

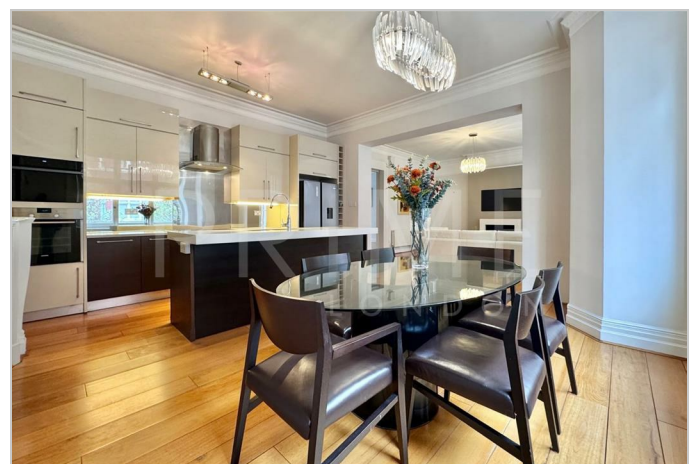
- Exceptional three bedroom ▪ 1,639 sq ft (152sqm) apartment
- Open plan reception and ▪ Master bedroom with ensuite fully fitted kitchen area
- Positioned between ▪ On site porter Marylebone and Paddington

This exceptional three bedroom apartment, located in the portered mansion block Hyde Park Mansions, is available for lease through Prime London.

Totalling 1,639 sq ft (152 sqm) the property boasts a spacious open plan reception and fully fitted kitchen area, with floor to ceiling windows and access to a Juliet balcony. All three bedrooms are generous, with fitted built in wardrobes. The master bedroom benefits from its own sleek and modern ensuite.

Located in the sought after area of Marylebone, the apartment is centrally located and just a short walk away from some of London's best restaurants, cafes and boutiques.

For transport, Hyde Park Mansions is just a stone's throw away from Edgware Road station, which has excellent transport links across the city.



These particulars, whilst believed to be accurate are set out as a general outline only for guidance and do not constitute any part of an offer or contract. Intending purchasers should not rely on them as statements of representation of fact, but must satisfy themselves by inspection or otherwise as to their accuracy. No person in this firm's employment has the authority to make or give any representation or warranty in respect of the property.