



Maine Tower

9 Harbour Way, Canary Wharf, E14 9DX

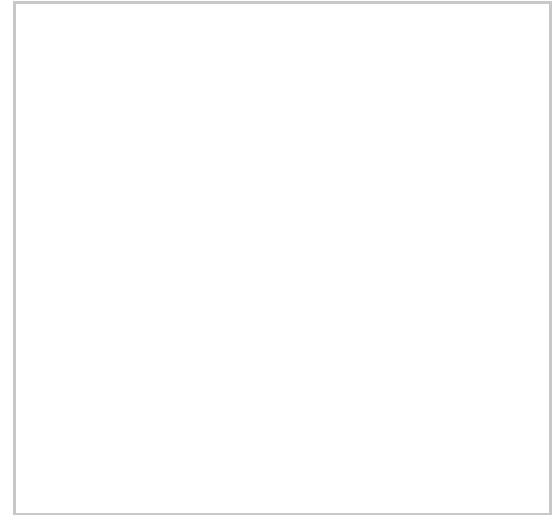
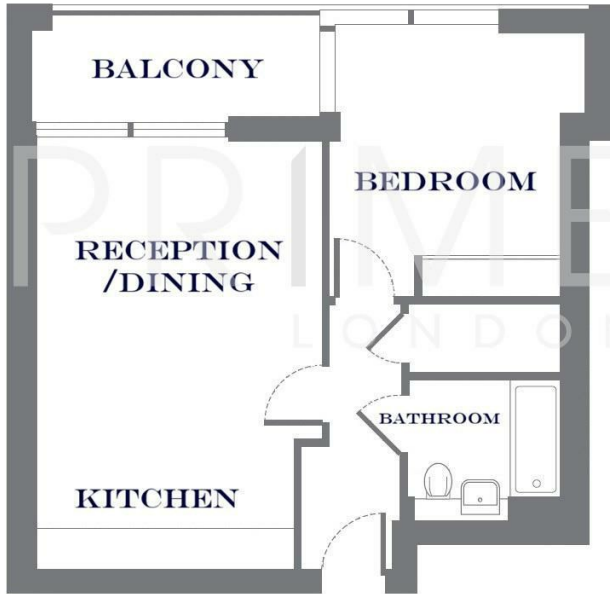
£715 Per Week



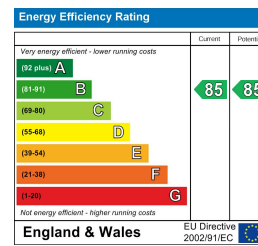
Floor Plan

Area Map

MAINE TOWER, HARBOUR WAY, E14 APPROXIMATE GROSS INTERNAL AREA 556 SQ FT (51.7 SQM)



Energy Efficiency Graph



Viewing

By appointment. Contact us on 0207 928 6663 if you wish to arrange a viewing appointment for this property, or require further information.

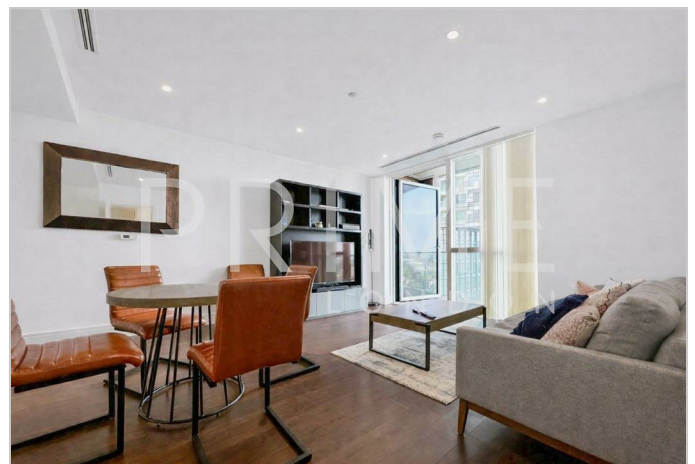
- Stunning one bedroom ▪ 556 sq ft (51.7 sqm) apartment
- Floor to ceiling windows ▪ 24 hour concierge
- Residents' gym, pool, cinema ▪ Excellent connections with and games room DLR, Jubilee and Elizabeth lines

This beautifully appointed one bedroom apartment, extending to 556 sq ft (51.7 sqm), is set within the iconic Maine Tower in the prestigious Harbour Central development, and is available for lease through Prime London.

The apartment offers a bright and contemporary living space, enhanced by floor to ceiling windows that provide panoramic views across the London skyline. The open plan kitchen and reception area are finished to a high specification, with fully integrated appliances and stylish modern interiors. The bedroom benefits from built in wardrobes, complemented by a spacious and well appointed bathroom.

Residents of Maine Tower enjoy exclusive access to exceptional on site amenities, including a private gym, cinema, and residents' lounge, as well as the security and convenience of a 24 hour concierge service.

Perfectly positioned in the heart of Canary Wharf, the development offers access to the area's array of shops, restaurants, and waterfront bars, alongside excellent transport connections via the DLR, Jubilee Line, and Elizabeth Line, ensuring swift travel across London.



These particulars, whilst believed to be accurate are set out as a general outline only for guidance and do not constitute any part of an offer or contract. Intending purchasers should not rely on them as statements of representation of fact, but must satisfy themselves by inspection or otherwise as to their accuracy. No person in this firm's employment has the authority to make or give any representation or warranty in respect of the property.