



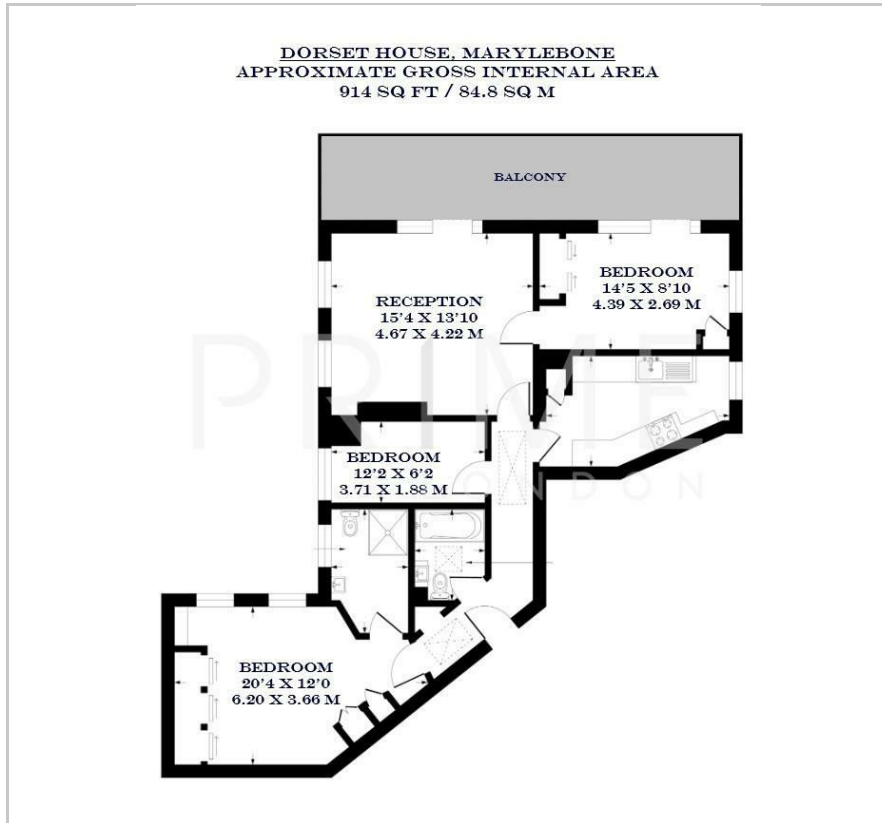
## Dorset House

Gloucester Place, Marylebone, NW1 5AH

£2,308 Per Week



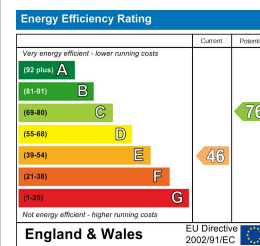
## Floor Plan



## Area Map



## Energy Efficiency Graph



## Viewing

By appointment. Contact us on 0207 052 1075 if you wish to arrange a viewing appointment for this property, or require further information.

- Exceptional three bedroom apartment
- 900 sq ft (83.6 sq m)
- Private balcony
- 24 hour porter and security services



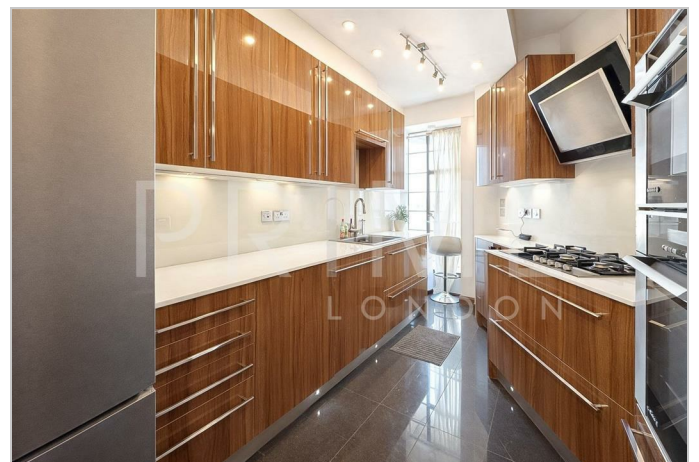
**SHORT LET** - This exceptional three bedroom apartment, located in the popular Marylebone neighbourhood, is available for short term lease through Prime London.

Totalling 900 sq ft (83.6 sqm), the property boasts a generous reception room with floor to ceiling windows and separate fully fitted kitchen with integrated appliances. A key feature of this property is the balcony which spans the width of the apartment and offers views of the city skyline. The master bedroom offers its own sleek ensuite and ample built in wardrobe space.

The apartment is situated within Dorset house, which offers residents 24 hour porter and security services.

Located in the heart of Marylebone, the apartment has easy access to Regent's Park and Oxford Street.

For transport, Dorset House is just a short walk away from Marylebone and Baker Street underground and overground stations, which offer excellent transport links across the city.



These particulars, whilst believed to be accurate are set out as a general outline only for guidance and do not constitute any part of an offer or contract. Intending purchasers should not rely on them as statements of representation of fact, but must satisfy themselves by inspection or otherwise as to their accuracy. No person in this firm's employment has the authority to make or give any representation or warranty in respect of the property.