



Harbour Reach

Imperial Wharf, SW6 2SS

£750,000



2



2

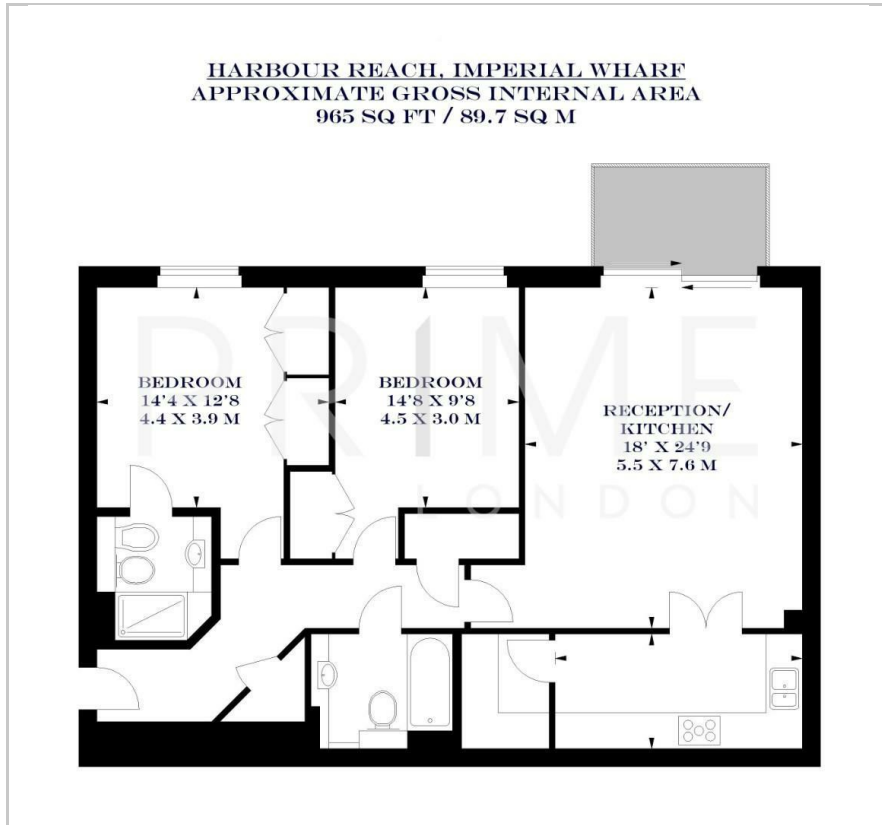


1

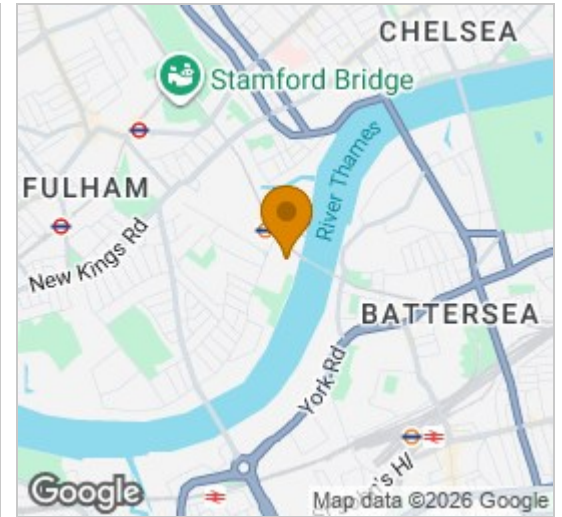


B

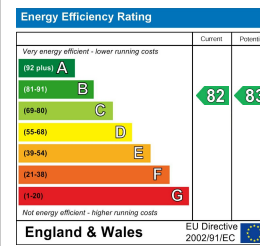
Floor Plan



Area Map



Energy Efficiency Graph



Viewing

By appointment. Contact us on 0207 052 1075 if you wish to arrange a viewing appointment for this property, or require further information.

- Exceptional apartment
- Private balcony
- Residents only gym
- 965 sq ft (89.7 sqm)
- Open plan reception
- 24 hour concierge



This exceptional two bedroom apartment, located in the popular Imperial Wharf development, is available for chain free sale through Prime London.

Totalling 965 sq ft (89.7 sqm) the property boasts a generous open plan reception and fully fitted kitchen with integrated appliances. The private balcony offers views of the River Thames and city skyline. Both bedrooms are modern and spacious with built-in wardrobe storage areas. The master bedroom showcases a sleek modern ensuite.

The apartment is located within the highly sought after Imperial Wharf development which offers residents a private gym and 24 hour concierge and security services.

For transportation, Imperial Wharf station is located next to the development and offers excellent transport links across the city via Overground services.



These particulars, whilst believed to be accurate are set out as a general outline only for guidance and do not constitute any part of an offer or contract. Intending purchasers should not rely on them as statements of representation of fact, but must satisfy themselves by inspection or otherwise as to their accuracy. No person in this firm's employment has the authority to make or give any representation or warranty in respect of the property.