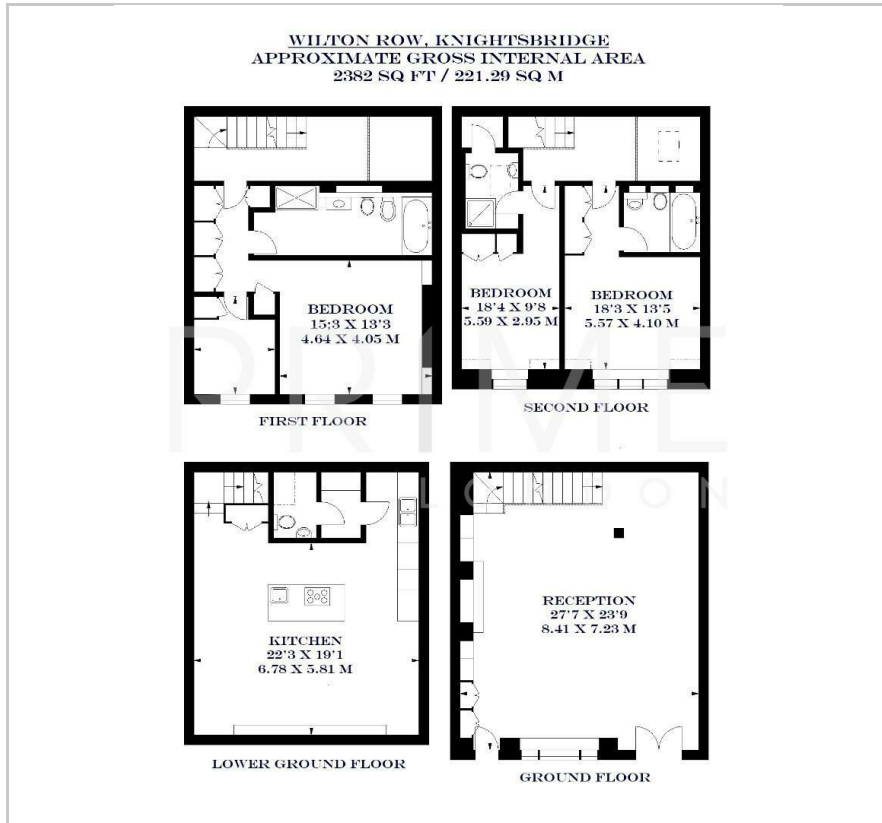




Wilton Row
Belgravia, SW1X 7NS
£3,219 Per Week

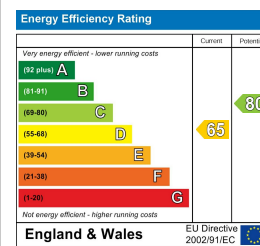
Floor Plan



Area Map



Energy Efficiency Graph



Viewing

By appointment. Contact us on 0207 052 1075 if you wish to arrange a viewing appointment for this property, or require further information.

- Exceptional three bedroom mews house
- 2,382 sq ft (221.29 sqm)
- Split over four floors
- Prestigious Knightsbridge location
- Two open plan receptions
- Recently refurbished

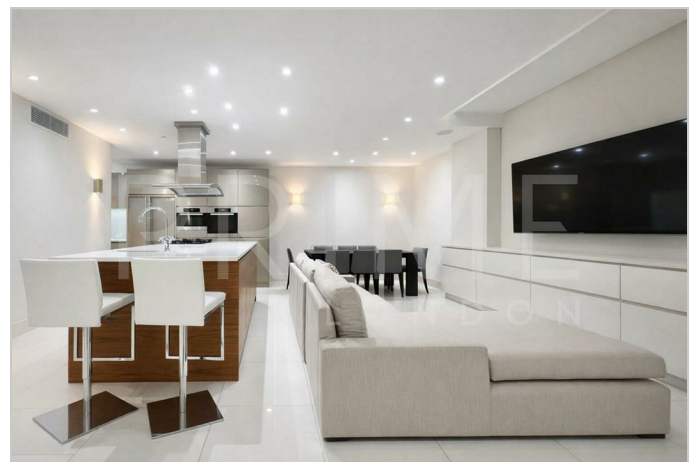


This exceptional three bedroom mews house, located within the highly prestigious area of Knightsbridge, is available for lease through Prime London.

Totalling 2,382 sq ft (221.29 sqm), the property boasts a generous open plan dining and fully fitted kitchen area, with high ceilings and modern features throughout. The ground floor offers a large reception with stylish period features. All three bedrooms are generous in size and benefit from their respective built in wardrobes and sleek ensuites. The master bedroom occupies the entire top floor and showcases a walk in wardrobe and ensuite.

Positioned in the highly prestigious area of Knightsbridge, the apartment has easy access to a range of upscale amenities, including high-end boutiques, gourmet restaurants, and cultural attractions.

For transport, Hyde Park Corner and Knightsbridge stations are just a stone's throw away and provide excellent transport links across the city.



These particulars, whilst believed to be accurate are set out as a general outline only for guidance and do not constitute any part of an offer or contract. Intending purchasers should not rely on them as statements of representation of fact, but must satisfy themselves by inspection or otherwise as to their accuracy. No person in this firm's employment has the authority to make or give any representation or warranty in respect of the property.