

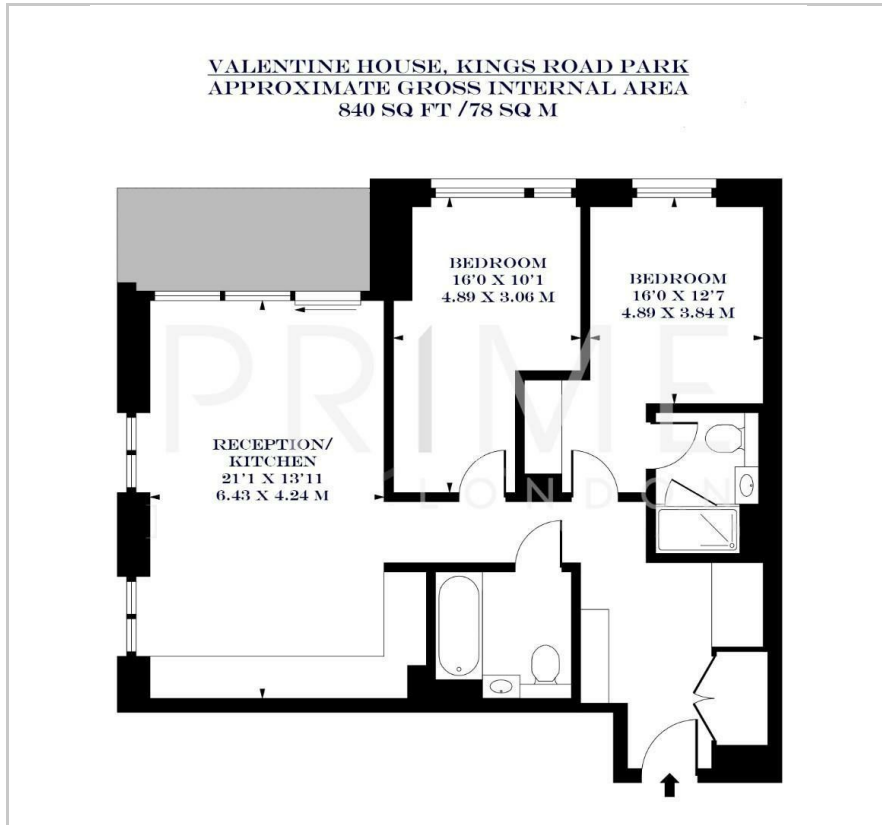
## Valentine House

2 Sands End Lane, King's Road Park, SW6 2QH

£1,195,000



## Floor Plan



## Area Map



## Energy Efficiency Graph



## Viewing

By appointment. Contact us on 0207 052 1075 if you wish to arrange a viewing appointment for this property, or require further information.

- Exceptional two bedroom ▪ 840 sq ft (78 sqm) apartment
- Private balcony ▪ Master bedroom with ensuite
- Residents only gym, pool, ▪ 24 hour concierge cinema and meeting rooms

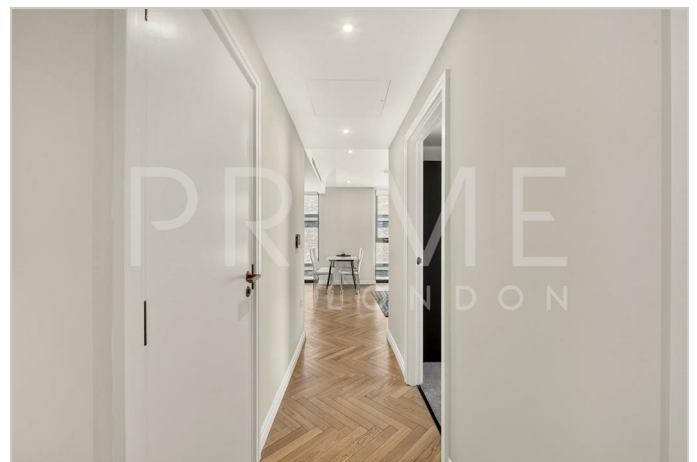
This exceptional two bedroom apartment, located in the highly sought after King's Road Park development, is available for chain free sale through Prime London.

Totalling 840 sq ft (78 sqm) the apartment boasts a large open plan fully fitted kitchen and reception area, which opens up to a private balcony. The master bedroom features a walk in wardrobe area and its own ensuite with sleek, modern finishes.

The apartment is situated within the highly prestigious Kings Road Park development which offers residents a gym, pool, cinema room, games room and meeting rooms, as well as a 24 hour concierge.

Positioned a short walk away from Kings Road, the apartment is ideally positioned nearby to some of London's best restaurants, cafes and bars.

For transport, Fulham Broadway and Imperial Wharf stations provide excellent transport links across the city.



These particulars, whilst believed to be accurate are set out as a general outline only for guidance and do not constitute any part of an offer or contract. Intending purchasers should not rely on them as statements of representation of fact, but must satisfy themselves by inspection or otherwise as to their accuracy. No person in this firm's employment has the authority to make or give any representation or warranty in respect of the property.