



## One Linear Place

Nine Elms, SW11 7ER

£715 Per Week



1



1

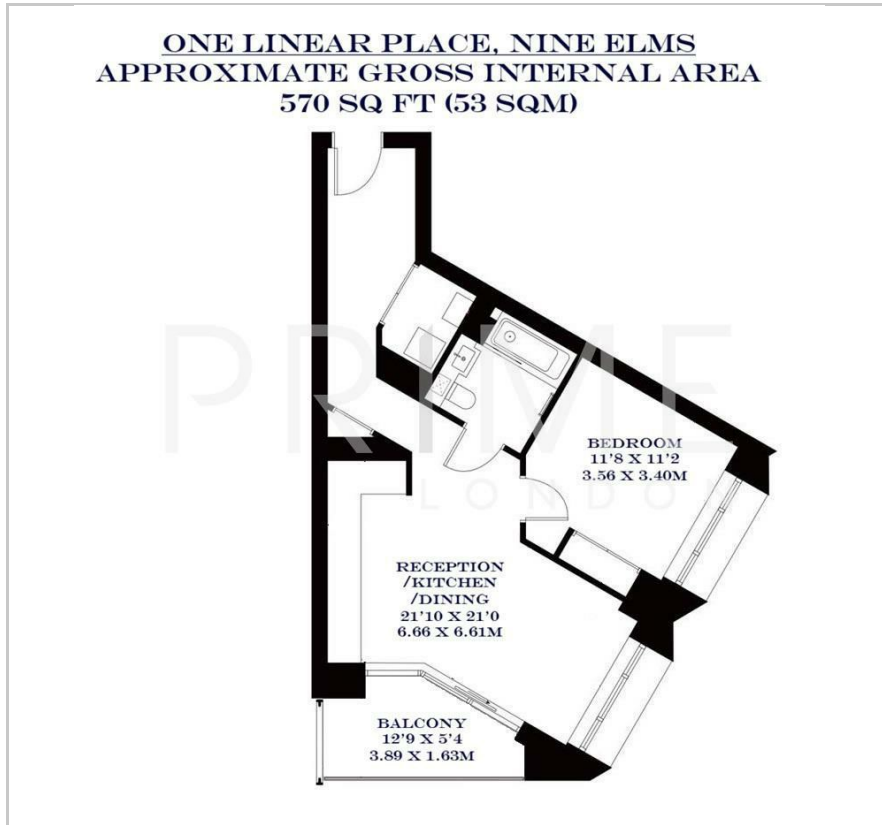


1

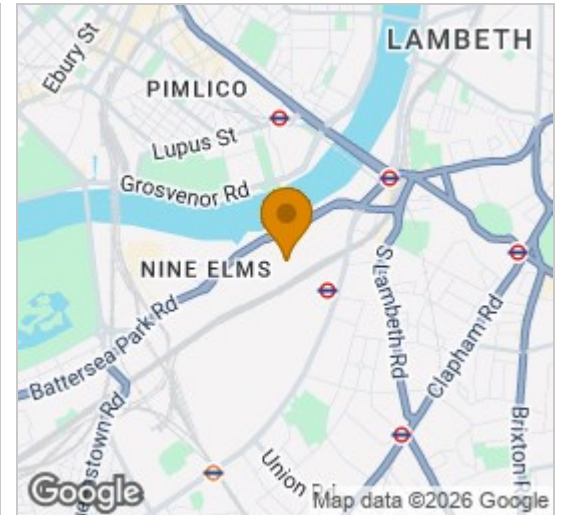


B

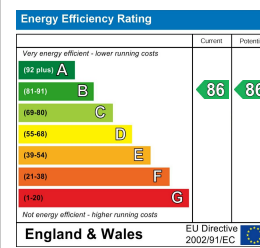
## Floor Plan



## Area Map



## Energy Efficiency Graph



## Viewing

By appointment. Contact us on 0207 928 6663 if you wish to arrange a viewing appointment for this property, or require further information.

- Stunning property
- Private balcony
- Underfloor heating
- 570 sq ft (53 sqm)
- Furnished
- 24 hour concierge and residents' lounge

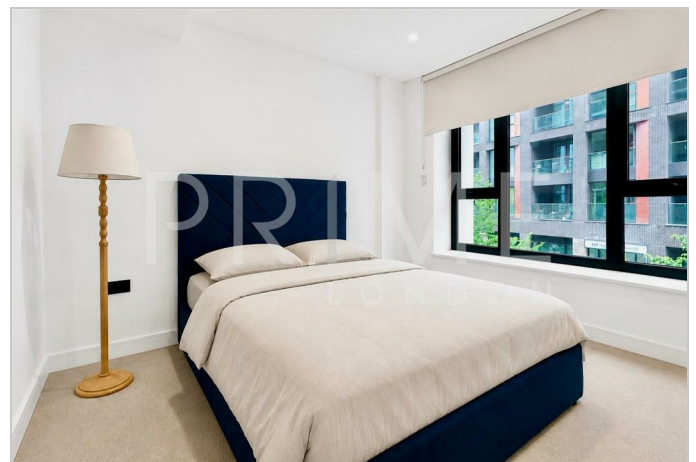


A beautifully presented one bedroom apartment extending to 570 sq ft (53 sqm), available for lease through Prime London.

Finished to an excellent standard throughout and elegantly furnished, this thoughtfully designed home offers bright open plan living accommodation, a modern integrated kitchen, a spacious double bedroom with fitted storage, and a beautifully appointed bathroom.

Perfectly positioned between Nine Elms, Battersea Power Station and Vauxhall stations, the property benefits from excellent connectivity to the London Underground, mainline rail services and the wider transport network.

One Linear Place has been thoughtfully designed to integrate seamlessly with its surroundings, placing residents at the heart of beautifully landscaped parkland and the wider regeneration of Nine Elms. Residents further benefit from access to a 24 hour concierge service and an exclusive residents' lounge.



These particulars, whilst believed to be accurate are set out as a general outline only for guidance and do not constitute any part of an offer or contract. Intending purchasers should not rely on them as statements of representation of fact, but must satisfy themselves by inspection or otherwise as to their accuracy. No person in this firm's employment has the authority to make or give any representation or warranty in respect of the property.