

Meadows House

6 Park Street, Chelsea Creek, SW6 2FQ

Asking Price £850,000



2



2

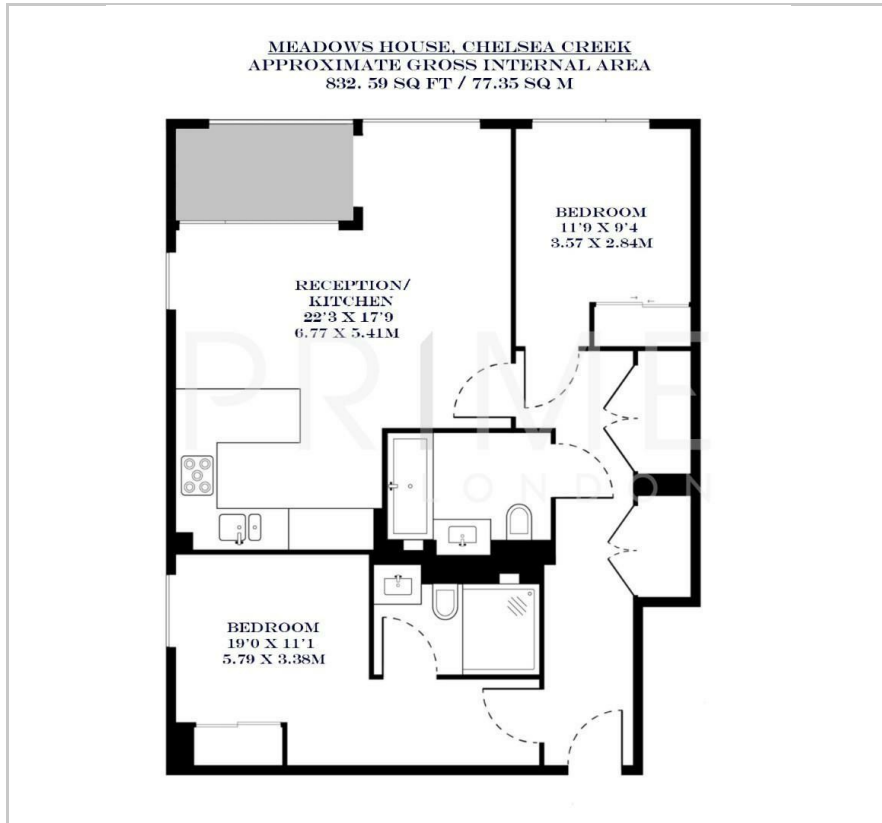


1



B

Floor Plan



Area Map



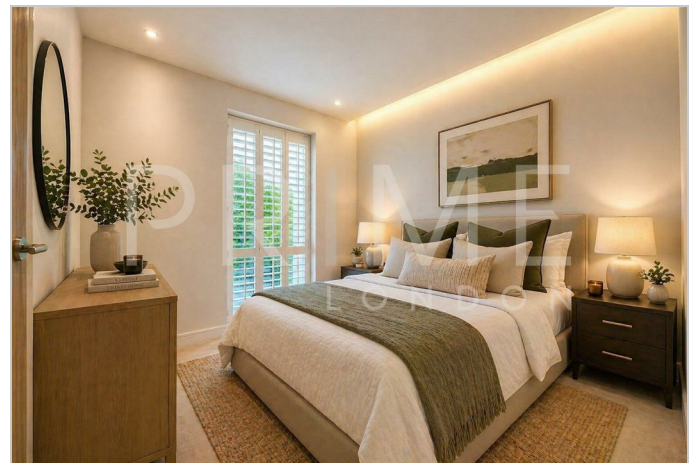
Energy Efficiency Graph



Viewing

By appointment. Contact us on 0207 052 1075 if you wish to arrange a viewing appointment for this property, or require further information.

- Excellent two bedroom ▪ 832.59 sq ft (77.35 sqm) apartment
- Private balcony ▪ Open plan reception and kitchen
- Residents' gym, swimming pool, sauna and cinema room ▪ 24-hour concierge



This exceptional 832 sq ft (77.35 sqm) two bedroom apartment, in Meadows House at Chelsea Creek, is available for chain free sale through Prime London.

The property boasts a generous open plan reception and kitchen area with floor to ceiling windows, allowing for excellent natural light throughout. Both bedrooms are modern and spacious with built-in wardrobe storage areas. The master bedroom showcases a sleek modern ensuite.

The apartment is located within the highly sought after Chelsea Creek development. The development offers a residents' gym, swimming pool, cinema and 24 hour concierge.

Located in the prestigious area of Chelsea, the apartment is just a short walk away from King's Road's restaurants, cafes and boutiques.

For transportation, Imperial Wharf station is located next to the development and offers excellent transport links to the city.



These particulars, whilst believed to be accurate are set out as a general outline only for guidance and do not constitute any part of an offer or contract. Intending purchasers should not rely on them as statements of representation of fact, but must satisfy themselves by inspection or otherwise as to their accuracy. No person in this firm's employment has the authority to make or give any representation or warranty in respect of the property.