



Ashley House, Westminster Quarter, SW1P 2FA

£1,384 Per Week





£1,384 Per Week

Ashley House

Westminster Quarter, SW1P 2FA

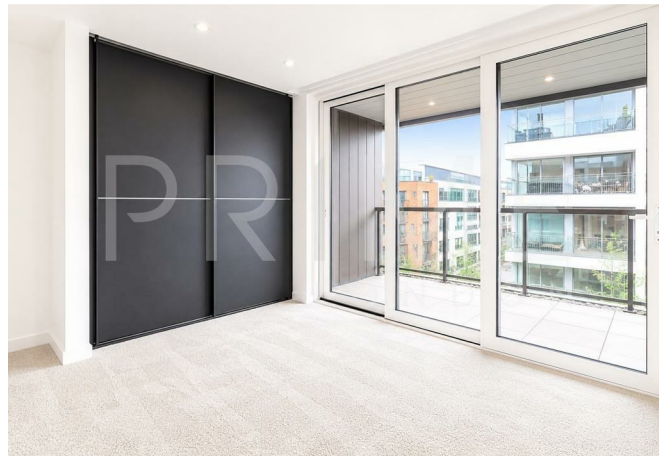
- Three bedroom apartment
- Unfurnished
- Gym
- 1,240 sq ft (117.2 sqm)
- 24 hour concierge
- Roof garden

A spacious and beautifully bright three bedroom apartment, extending to approximately 1,240 sq ft (115.2 sqm), available to rent on an unfurnished basis within the sought-after Westminster Quarter development through Prime London.

Ideally positioned moments from the River Thames and the Houses of Parliament, the apartment offers an impressive open-plan reception room with full-width floor-to-ceiling windows leading onto a private balcony, creating an abundance of natural light throughout. The contemporary kitchen is fitted with integrated Siemens appliances, while further benefits include wood flooring, comfort cooling, generous bedroom accommodation, a principal bedroom with en suite bathroom, a separate luxury family bathroom, and excellent storage throughout. A utility cupboard housing a washer dryer and additional large storage cupboards further enhance the practicality of the apartment.

Residents of Westminster Quarter enjoy the convenience of a 24 hour concierge service, a residents' gymnasium, and access to a stunning landscaped roof garden boasting spectacular panoramic views across the London skyline and its iconic landmarks.

The development is perfectly placed for the extensive amenities of Westminster and Victoria, with an excellent selection of shops, cafés and restaurants nearby. The transport links of Victoria Station, St James's Park Underground Station and Westminster Underground Station are all within easy walking distance.







DOMYT
LONDON

Taylor Wimpey Central London
Taylor Wimpey Central London
Taylor Wimpey Central London

Floor Plans



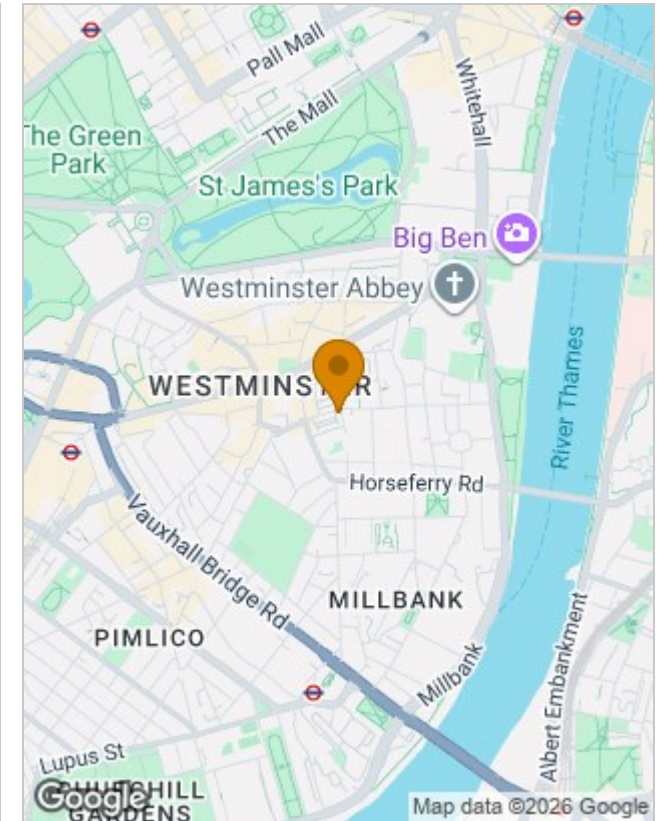
Viewing

By appointment. Contact us if you wish to arrange a viewing appointment for this property, or require further information.

The particulars are set out as a general outline only for the guidance of intended purchasers or lessees, and do not constitute, any part of a contract. Nothing in these particulars shall be deemed to be a statement that the property is in good structural condition or otherwise nor that any of the services, appliances, equipment or facilities are in good working order. Purchasers should satisfy themselves of this prior to purchasing.

21 Grosvenor Gardens, Belgravia, London SW1W 0BP | Palace View, 131 Lambeth Road, London SE1 7BT
 Tel: 0207 052 1075 | 0207 928 6663 Email: Office@PrimeLondonResidential.com www.PrimeLondonResidential.com

Location Map



Energy Performance Graph

