



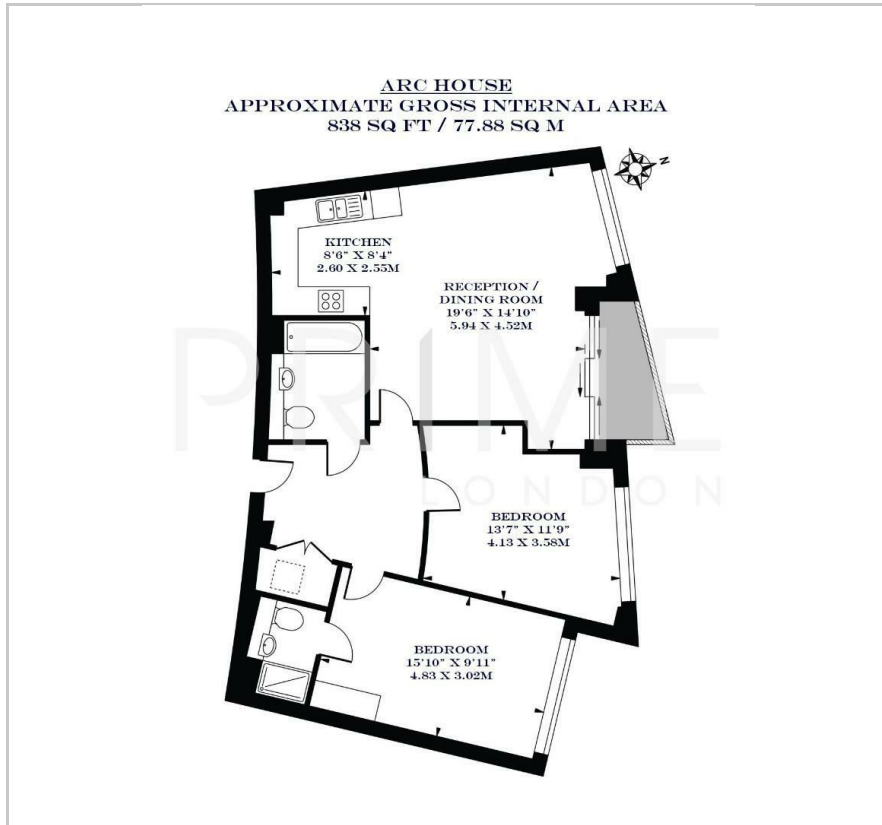
## Arc House

16 Maltby Street, Tower Bridge, SE1 3GP

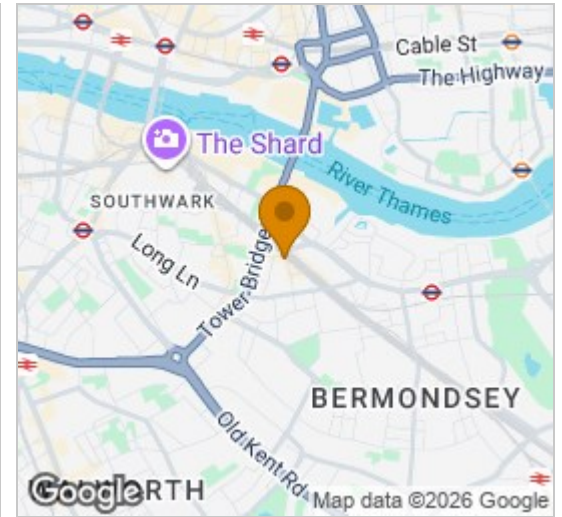
£646 Per Month



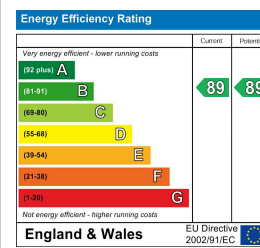
## Floor Plan



## Area Map



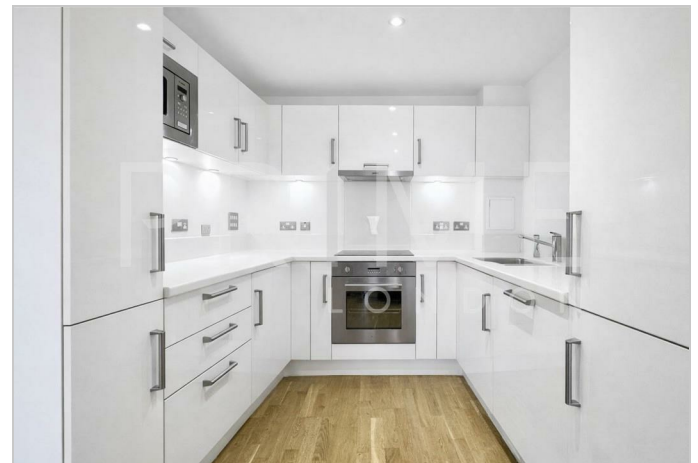
## Energy Efficiency Graph



## Viewing

By appointment. Contact us on 0207 928 6663 if you wish to arrange a viewing appointment for this property, or require further information.

- Two bedroom apartment
- Private balcony
- Daytime concierge
- 838 sqft (77.88 sqm)
- Central Location
- Close transport links

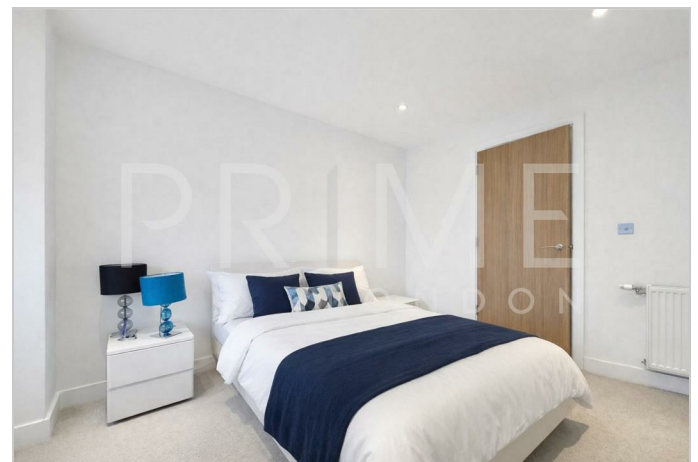


This modern two bedroom property, located at The Arc House development near to Tower Bridge, is available for lease through Prime London.

Totalling 838 sq ft (77.88 sqm), this stylish apartment blends modern living with the vibrant character of its neighborhood. The apartment benefits from an expansive open-plan reception area, with full-height windows that extend to a sizeable private balcony. The sleek, contemporary kitchen is outfitted with high-quality appliances, and two generously sized double bedrooms (master with ensuite) and a further bathroom complete the apartment.

Residents of The Arc also benefit from a daytime concierge and secure private communal gardens. Centrally located in the heart of London Bridge, Arc House development is only a short walking distance to Tower Bridges, bars, restaurants and gastro pubs.

Residents have excellent transport links via the River Taxi, and wonderful bus and overground train network, and both London Bridge and Tower Hill Underground Stations offering a platter of transport opportunities, including the Jubilee line (Bermondsey station) just a short 12 mins walk away.



These particulars, whilst believed to be accurate are set out as a general outline only for guidance and do not constitute any part of an offer or contract. Intending purchasers should not rely on them as statements of representation of fact, but must satisfy themselves by inspection or otherwise as to their accuracy. No person in this firm's employment has the authority to make or give any representation or warranty in respect of the property.