



## The Courthouse

70 Horseferry Road, Westminster, SW1P 2DU

£750 Per Week



1



1

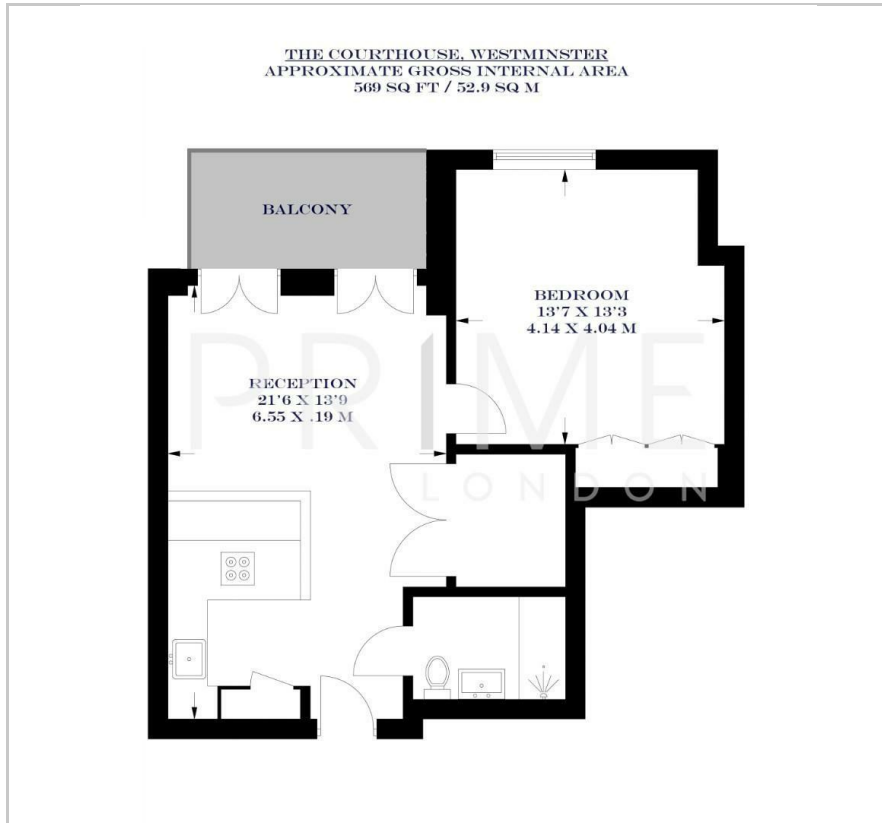


1



C

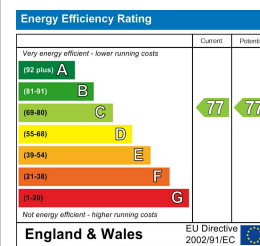
## Floor Plan



## Area Map



## Energy Efficiency Graph



## Viewing

By appointment. Contact us on 0207 052 1075 if you wish to arrange a viewing appointment for this property, or require further information.

- One bedroom apartment
- Generous private balcony
- Stone's throw from amenities
- 569 sq ft (52.9 sqm)
- Fully integrated appliances and ample storage throughout
- 24 hour concierge and local restaurants

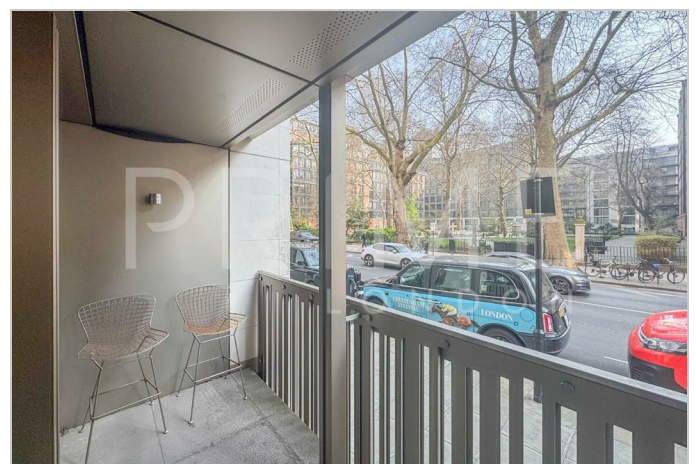
This bright one bedroom apartment, located in the prestigious Courthouse development in the heart of Westminster, is available for lease through Prime London.

Totalling 569 sq ft (52.9 sqm), this property boasts a sizeable reception area with access to a private balcony, a double bedroom, a separate bathroom, and a large utility cupboard.

The apartment comes with fully integrated appliances, a high-specification 'walk-in' shower suite, ample storage, underfloor heating, comfort cooling, and recessed lighting.

The Courthouse offers a concierge service, landscaped gardens, and a resident's fitness centre, making it an ideal home or London base.

Horseferry Road provides immediate access to numerous shops and street cafes in Westminster Village, with St James's Park and Westminster Palace within walking distance.



These particulars, whilst believed to be accurate are set out as a general outline only for guidance and do not constitute any part of an offer or contract. Intending purchasers should not rely on them as statements of representation of fact, but must satisfy themselves by inspection or otherwise as to their accuracy. No person in this firm's employment has the authority to make or give any representation or warranty in respect of the property.