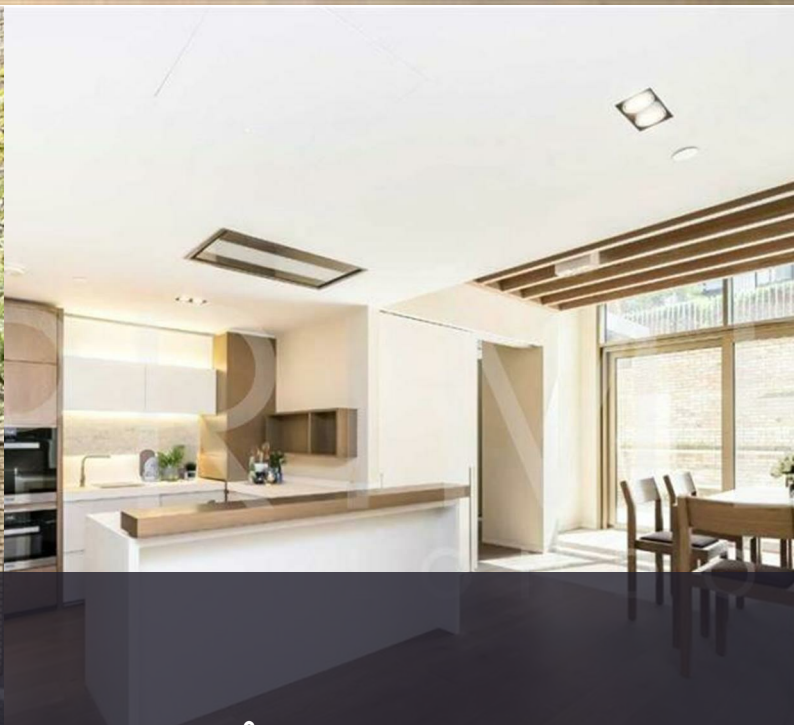


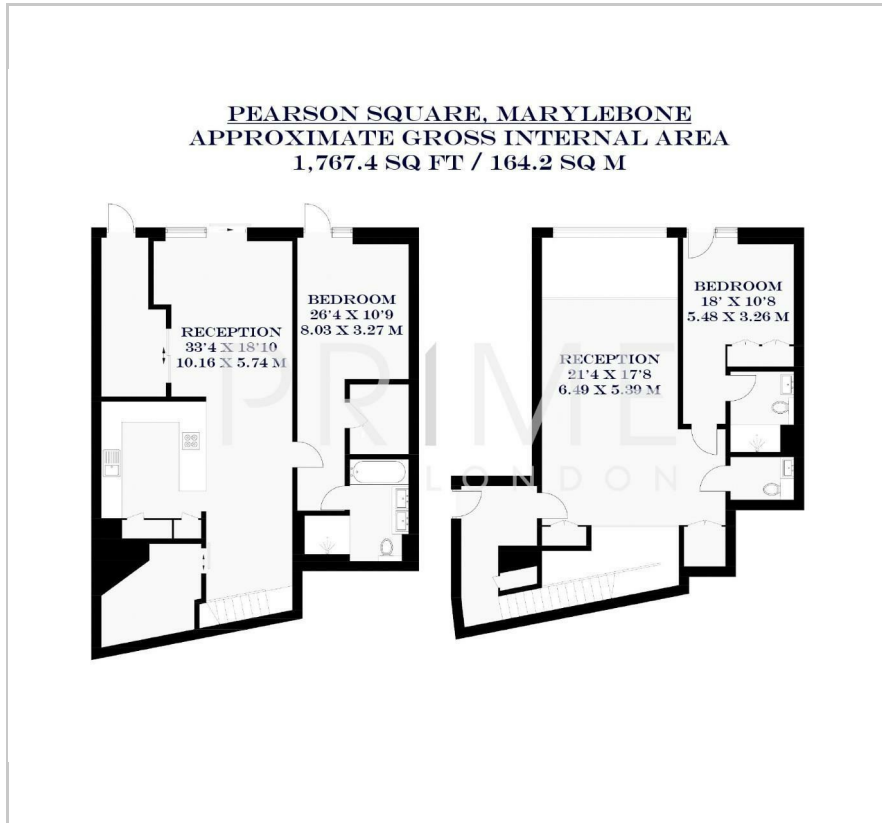
6 Pearson Square

Fitzroy Place, W1T 3BJ

£1,900 Per Week



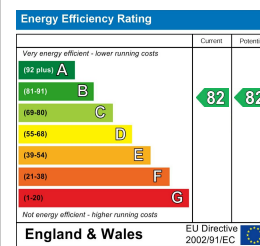
Floor Plan



Area Map



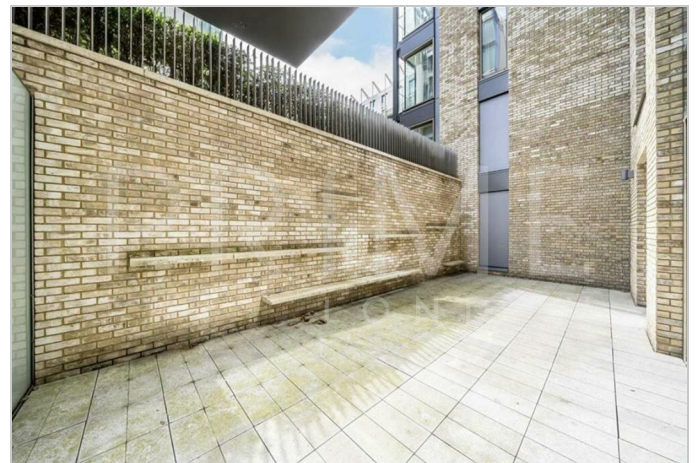
Energy Efficiency Graph



Viewing

By appointment. Contact us on 0207 928 6663 if you wish to arrange a viewing appointment for this property, or require further information.

- Duplex apartment
- Private Balcony
- Treatment room, Communal lounge
- 1,767 sq ft (164.2 sqm)
- Residents' gym, Cinema room
- 24 hour concierge



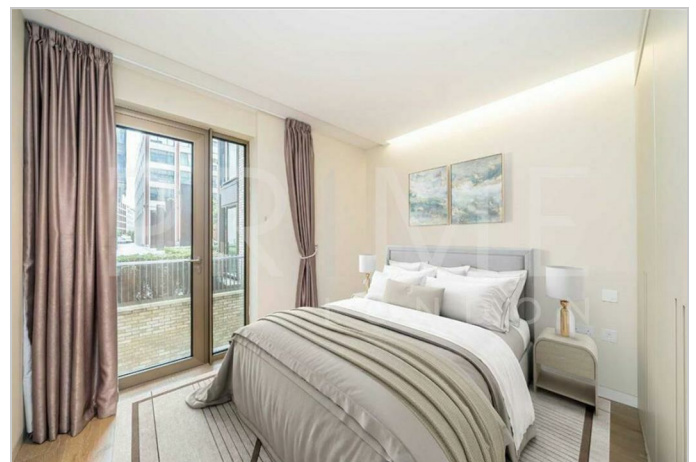
This exceptional three bedroom duplex apartment, located in the highly sought after Fitzroy Place development, is available for lease through Prime London.

Arranged over two floors, this well-designed 1,767 sq ft (164.2 sqm) apartment offers generous living space, a contemporary kitchen, and a large private terrace. The property comprises three bedrooms, including a principal suite with dressing area and en-suite, an additional en-suite bedroom, flexible living and dining areas, and excellent storage throughout.

Pearson Square is located within the highly sought after Fitzroy Place, which offers residents a private gym, cinema room, treatment room, communal lounge and 24 hour concierge.

Located in the vibrant area of Marylebone, the apartment is just a short walk away from some of London's best restaurants, cafes and boutiques. It also has close proximity to the luxury shopping areas of Oxford Street, Regent Street and New Bond Street

For transportation, Oxford Street and Goodge Street stations are just a stone's throw away and offer excellent transport links across the city.



These particulars, whilst believed to be accurate are set out as a general outline only for guidance and do not constitute any part of an offer or contract. Intending purchasers should not rely on them as statements of representation of fact, but must satisfy themselves by inspection or otherwise as to their accuracy. No person in this firm's employment has the authority to make or give any representation or warranty in respect of the property.