



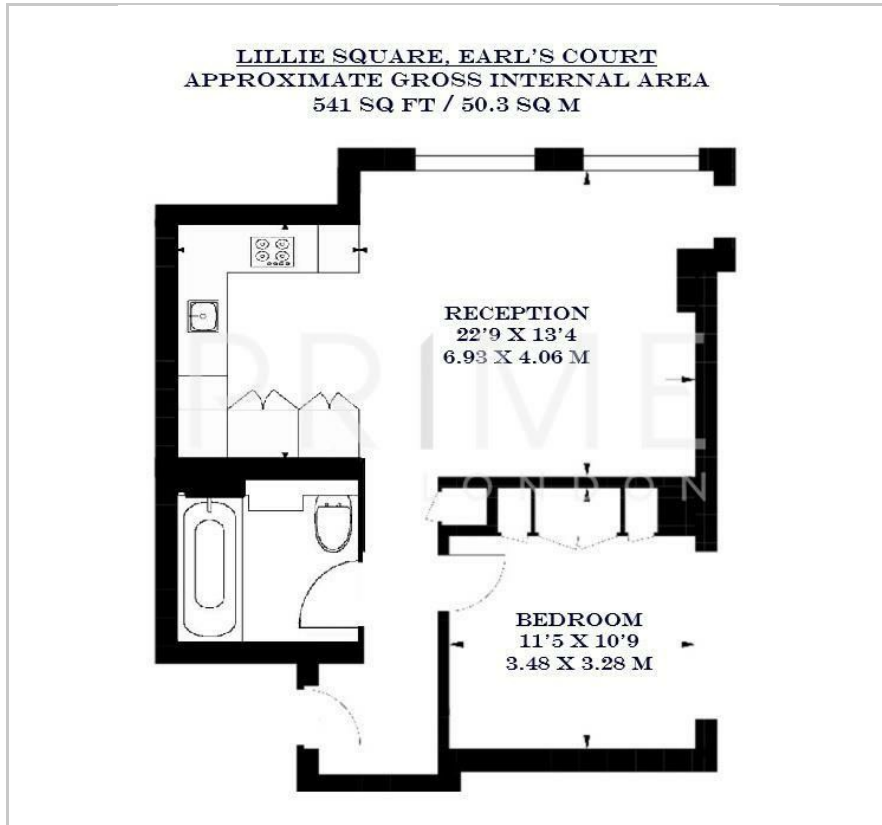
1 Lillie Square

West Brompton, SW6 1DZ

£695 Per Week



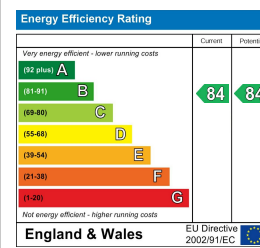
Floor Plan



Area Map



Energy Efficiency Graph



Viewing

By appointment. Contact us on 0207 052 1075 if you wish to arrange a viewing appointment for this property, or require further information.

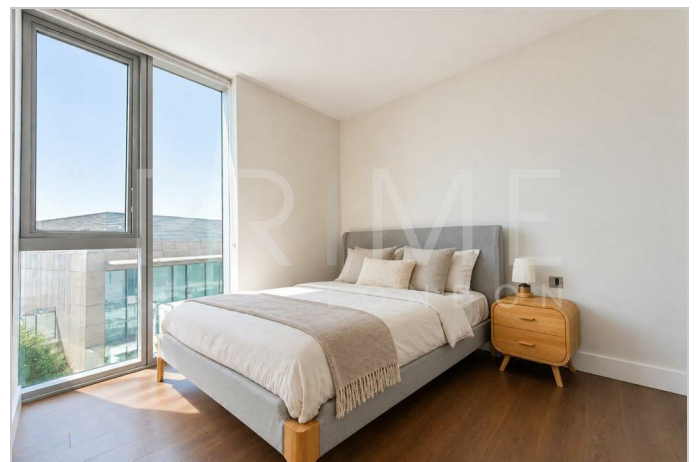
- Exceptional apartment
- 541 sq ft (50.3 sqm)
- Open plan reception/kitchen
- Residents only leisure facilities
- Prestigious development
- 24 hour concierge

This exceptional one bedroom apartment, located in the sought after Lillie Square development, is available for lease through Prime London.

Totalling 541 sq ft (50.3 sqm), the property boasts a spacious open plan reception and kitchen area, with floor to ceiling windows that allow for excellent natural light throughout. The apartment also benefits from ample storage space areas and a modern sleek ensuite.

The apartment is located in the highly sought after Lillie Square development which offers residents leisure facilities such as a gym, swimming pool, spa and 24 hour concierge.

For transport, Lillie Square is positioned a stone's throw away from West Brompton Station and within easy reach of Fulham and Chelsea, offering a wide selection of cafés, restaurants, and local amenities nearby.



These particulars, whilst believed to be accurate are set out as a general outline only for guidance and do not constitute any part of an offer or contract. Intending purchasers should not rely on them as statements of representation of fact, but must satisfy themselves by inspection or otherwise as to their accuracy. No person in this firm's employment has the authority to make or give any representation or warranty in respect of the property.