



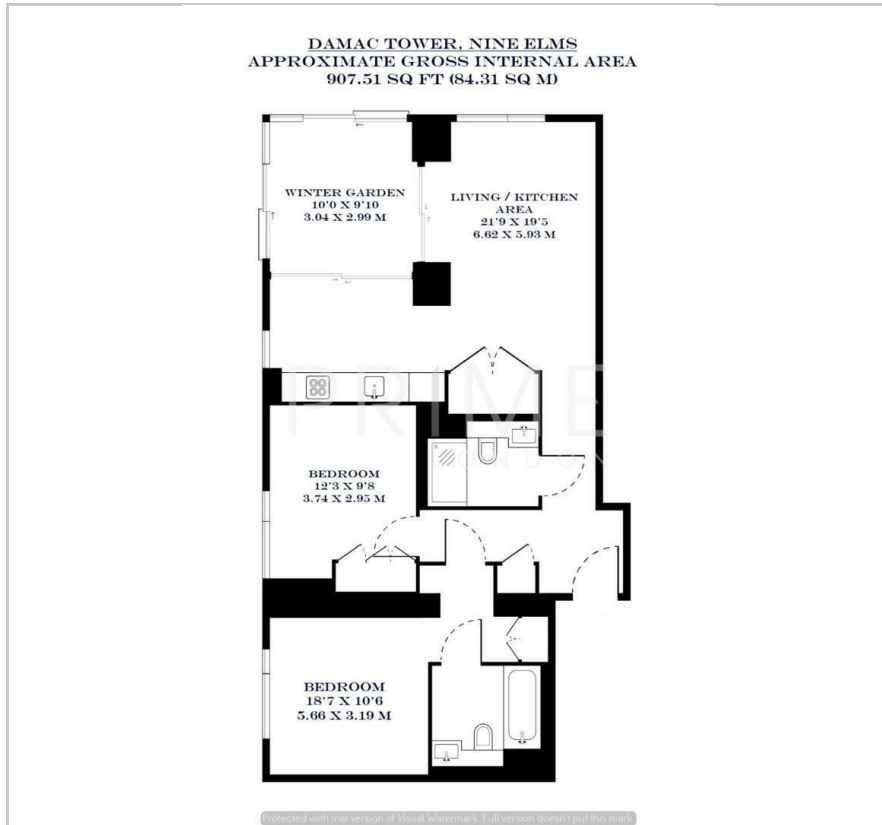
## Damac Tower

67 Bondway, Nine Elms, SW8 1GR

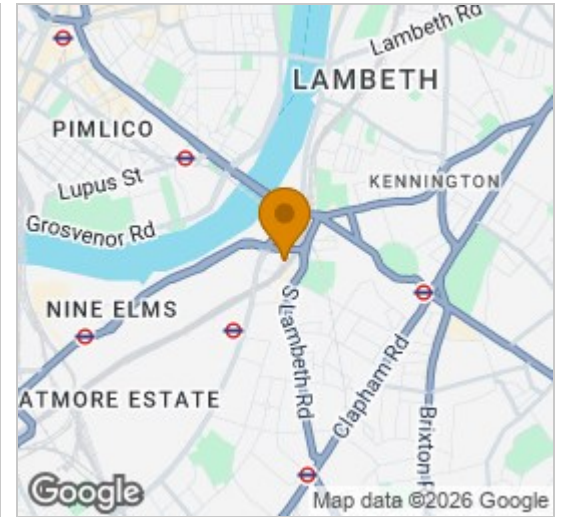
£1,073 Per Week



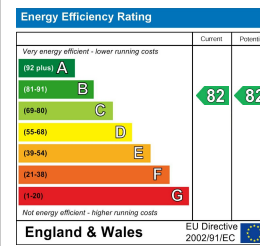
## Floor Plan



## Area Map



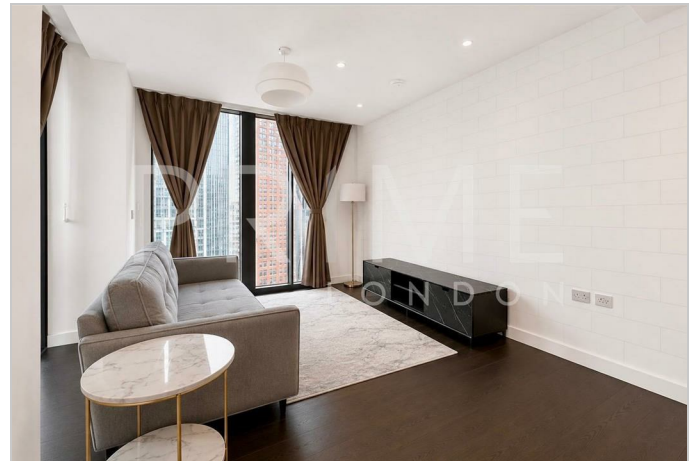
## Energy Efficiency Graph



## Viewing

By appointment. Contact us on 0207 928 6663 if you wish to arrange a viewing appointment for this property, or require further information.

- Two bedroom apartment
- Winter garden with stunning views
- Expansive indoor swimming pool and jacuzzi
- Wellness centre
- Residents' lounge
- 907.51 sq ft (84.31 sqm)
- 24 hour concierge
- Gym with panoramic views of London
- Cinema
- Landscaped communal gardens



This exceptional two bedroom two bathroom furnished apartment, spanning 907 sq ft (84.31 sqm) within the sought-after Damac Tower development, is available for lease through Prime London.

The property comprises a generous open-plan living, dining and kitchen area, creating an ideal space for both everyday living and entertaining. Floor-to-ceiling glazing allows for an abundance of natural light and provides direct access to the enclosed winter garden, offering a versatile additional space.

Both double well-proportioned bedrooms, the principal bedroom benefiting from an en-suite in addition to the family bathroom across the hall. The property also benefits from excellent storage facilities throughout.

Upon entering, residents are greeted with an abundance of natural light flooding through expansive windows, illuminating the meticulously curated living spaces. One of the standout features is the separate floating winter garden, with breathtaking views of the city skyline and dramatic sunsets.

Residents of Damac Tower benefit from exclusive access to world-class amenities, including a stunning indoor swimming pool and Jacuzzi, lavish residents' lounge, fully equipped Versace-branded gymnasium, and private cinema. The 9,924 square feet of landscaped communal gardens offer a peaceful escape, while the secure internal children's play area ensures enjoyment for younger residents



These particulars, whilst believed to be accurate are set out as a general outline only for guidance and do not constitute any part of an offer or contract. Intending purchasers should not rely on them as statements of representation of fact, but must satisfy themselves by inspection or otherwise as to their accuracy. No person in this firm's employment has the authority to make or give any representation or warranty in respect of the property.