

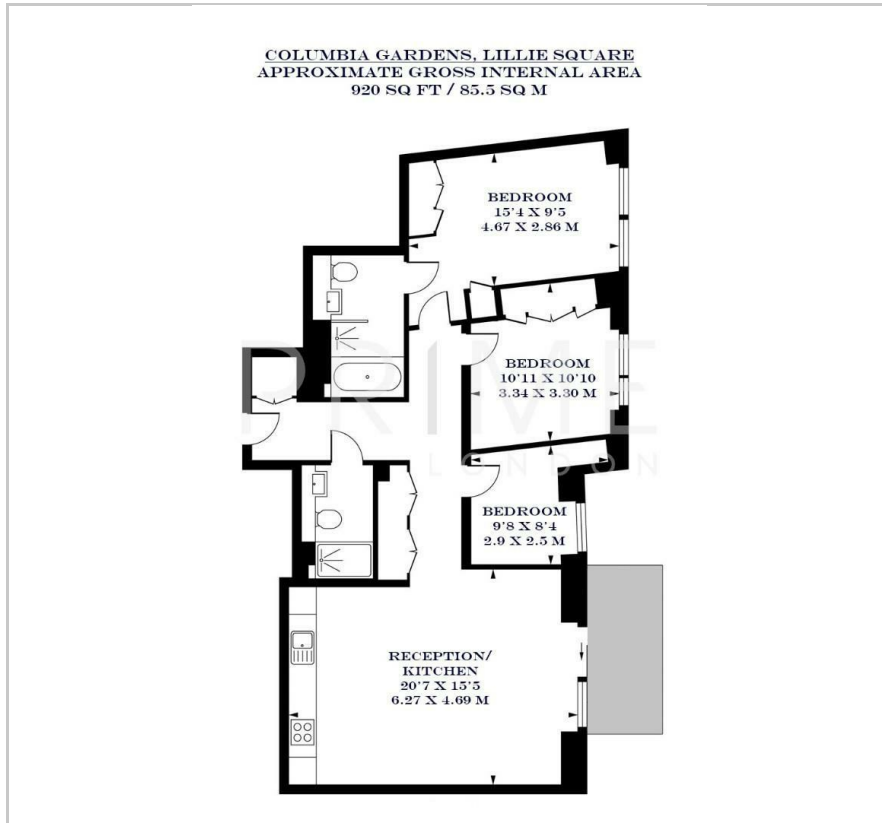
5 Columbia Gardens

Lillie Square, West Brompton, SW6 1FX

£1,100 Per Week



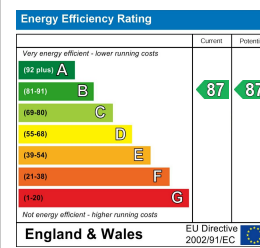
Floor Plan



Area Map



Energy Efficiency Graph



Viewing

By appointment. Contact us on 0207 052 1075 if you wish to arrange a viewing appointment for this property, or require further information.

- Exceptional three bedroom ▪ 920 sq ft (85.5 sqm) apartment
- Parking available to lease ▪ Residents' only gym, swimming pool and spa
- Moments away from West ▪ 24 hour concierge Brompton Station

This exceptional three bedroom apartment, located in the highly sought after Lillie Square, is available for lease through Prime London.

Totalling 920 sq ft (85.5 sqm), the property boasts a spacious open plan reception and kitchen area, with floor to ceiling windows that allow access to a private balcony. The apartment also benefits from ample storage space, comfort cooling and underfloor heating. The master bedroom features a modern sleek ensuite.

The apartment is located in the luxurious Lillie Square development which offers exclusive access to leisure facilities such as a gym, swimming pool, spa and 24 hour concierge. Parking is also available to lease separately.

For transport, Lillie Square is positioned a stone's throw away from West Brompton Station and within easy reach of Fulham and Chelsea, offering a wide selection of cafés, restaurants, and local amenities nearby.



These particulars, whilst believed to be accurate are set out as a general outline only for guidance and do not constitute any part of an offer or contract. Intending purchasers should not rely on them as statements of representation of fact, but must satisfy themselves by inspection or otherwise as to their accuracy. No person in this firm's employment has the authority to make or give any representation or warranty in respect of the property.