



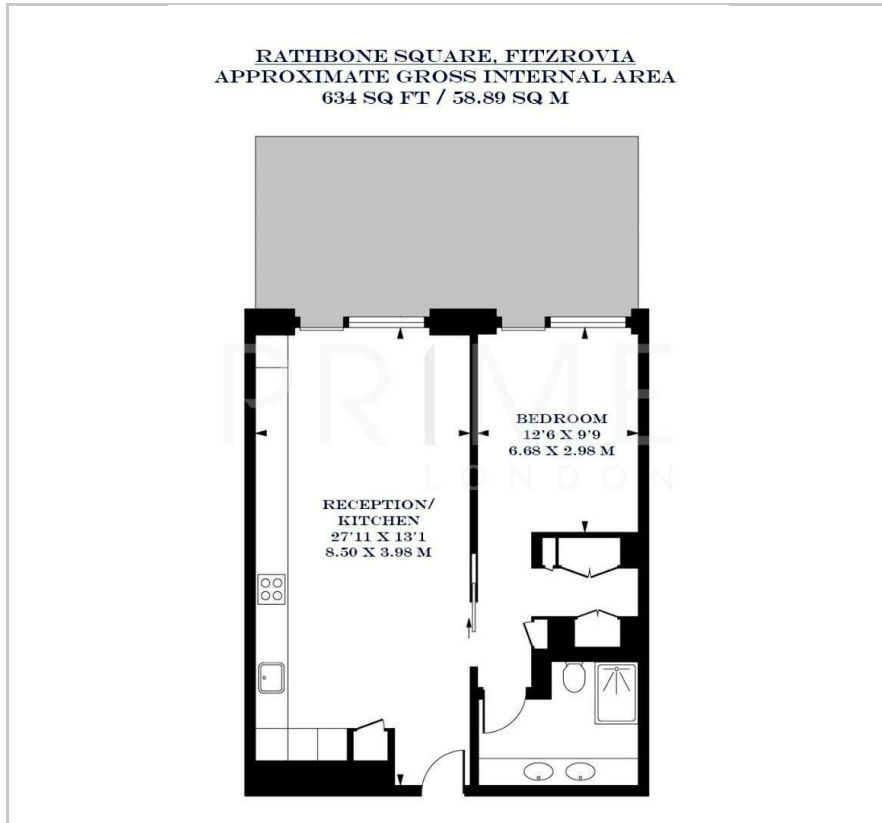
Rathbone Square

37 Rathbone Place, Fitzrovia, W1T 1JN

£1,250 Per Week



Floor Plan



Area Map



Energy Efficiency Graph



Viewing

By appointment. Contact us on 0207 052 1075 if you wish to arrange a viewing appointment for this property, or require further information.

- Exceptional one bedroom apartment
- 634 sq ft (58.89 sqm)
- Large private terrace
- Walk in wardrobe and ensuite
- Private gym, pool, cinema and lounge
- 24 hour concierge

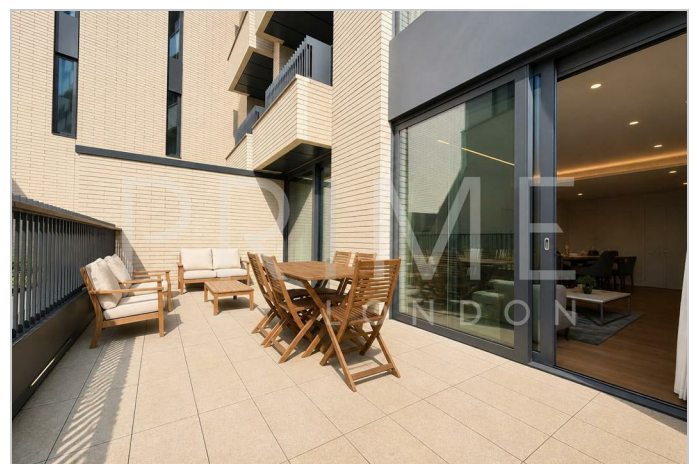
This exceptional one bedroom apartment, located in the highly sought after Rathbone Square, is available for lease through Prime London.

Totalling 634 sq ft (58.89 sqm), the property boasts a generous open plan reception area and fully fitted kitchen with integrated appliances. A key feature of this apartment is the terrace, which spans over 250 sq ft. The master bedroom is large with a walk in wardrobe area and sleek modern ensuite.

The property is situated within Rathbone Square, which offers its residents a private gym, pool, cinema, lounge, and 24 hour concierge service.

Ideally located in the heart of London, Rathbone Square is positioned between the West End, Soho, and Fitzrovia.

For transport, Rathbone Square, is just a short walk away from Tottenham Court Road and Goudge Street, offering excellent transport links across the city.



These particulars, whilst believed to be accurate are set out as a general outline only for guidance and do not constitute any part of an offer or contract. Intending purchasers should not rely on them as statements of representation of fact, but must satisfy themselves by inspection or otherwise as to their accuracy. No person in this firm's employment has the authority to make or give any representation or warranty in respect of the property.