

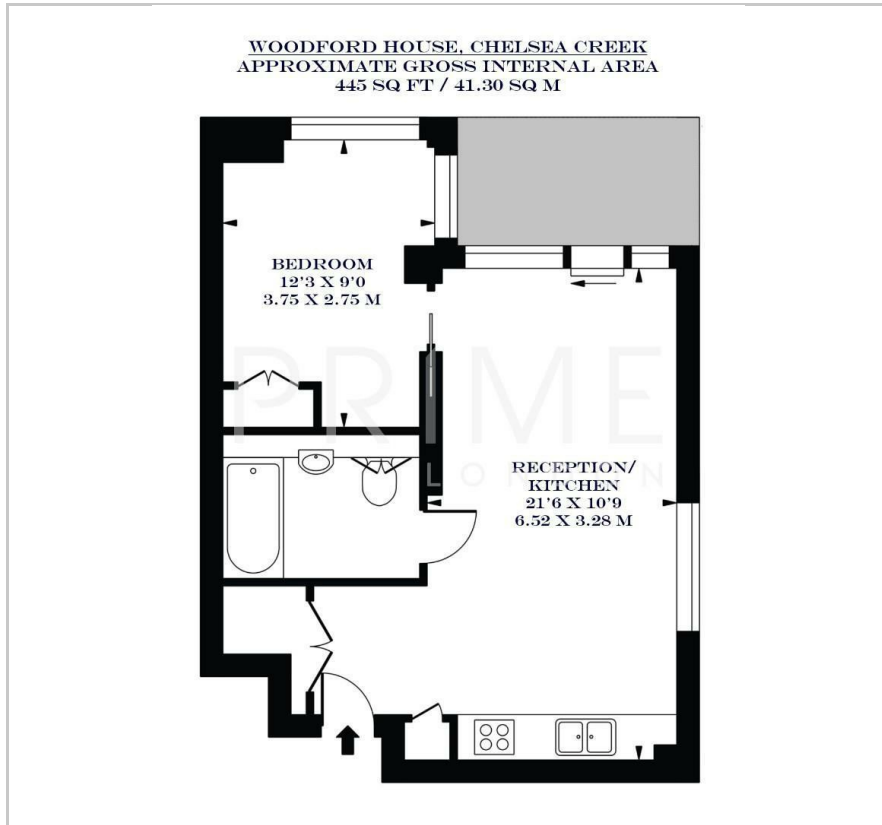
Woodford House

4 Thurstan Street, Chelsea Creek, SW6 2GB

Asking Price £500,000



Floor Plan



Area Map



Energy Efficiency Graph



Viewing

By appointment. Contact us on 0207 052 1075 if you wish to arrange a viewing appointment for this property, or require further information.

- Exceptional one bedroom ▪ 445 sq ft (41.30 sqm) apartment
- Private balcony ▪ Open plan reception/kitchen
- Residents' gym, swimming pool, spa and cinema room ▪ 24 hour concierge



This exceptional one bedroom apartment, located in the highly sought after Chelsea Creek development, is available for chain free sale through Prime London.

Totalling 445 sq ft (41.30 sqm) the property boasts a generous open plan reception and kitchen area with floor to ceiling windows and access to a private balcony. The master bedroom is modern and spacious with built-in wardrobe storage space.

Woodford House is located within the highly sought after Chelsea Creek development which offers a residents' gym, swimming pool, spa, cinema room and 24 hour concierge.

Located in a prime riverside location, the apartment is just a short walk away from some of London's best restaurants, cafes and boutiques.

For transportation, Imperial Wharf station is just a stone's throw away and offers excellent transport links to the city.



These particulars, whilst believed to be accurate are set out as a general outline only for guidance and do not constitute any part of an offer or contract. Intending purchasers should not rely on them as statements of representation of fact, but must satisfy themselves by inspection or otherwise as to their accuracy. No person in this firm's employment has the authority to make or give any representation or warranty in respect of the property.