



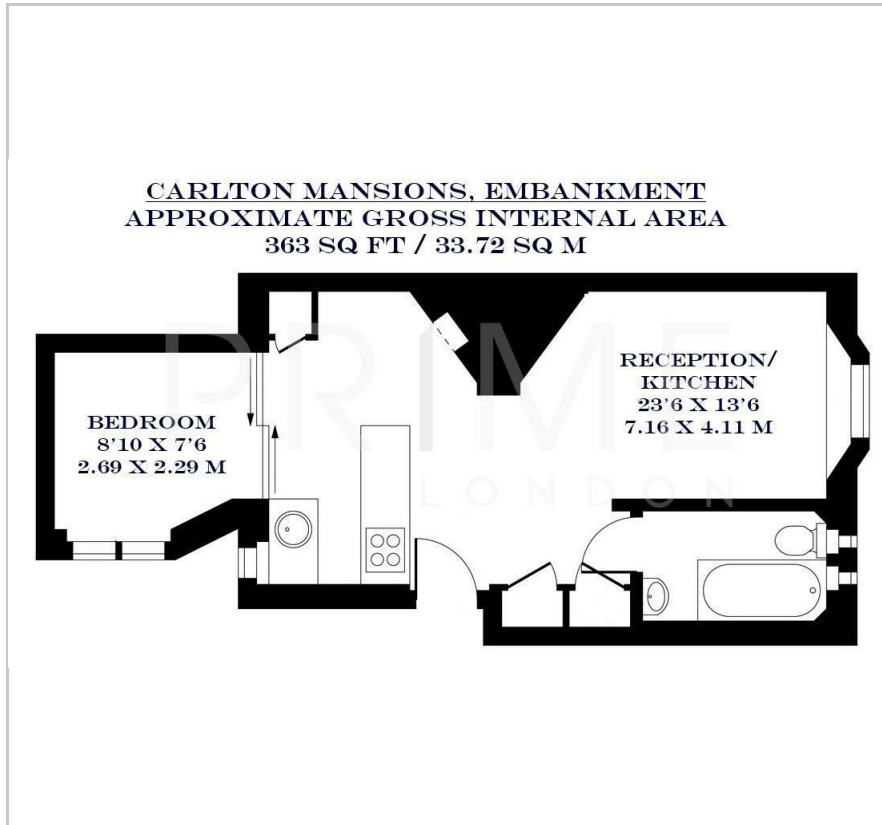
Carlton Mansions

16-17 York Buildings, Victoria Embankment, WC2N 6LS

£485 Per Week



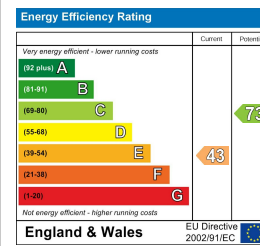
Floor Plan



Area Map



Energy Efficiency Graph



Viewing

By appointment. Contact us on 0207 052 1075 if you wish to arrange a viewing appointment for this property, or require further information.

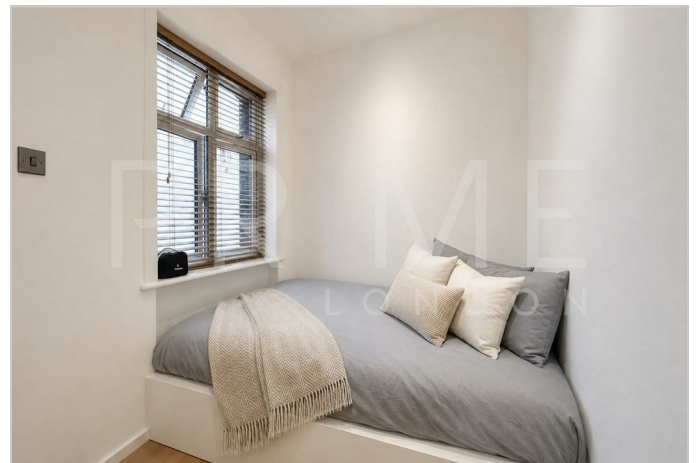
- Exceptional one bedroom ▪ 363 sq ft (33.72 sqm) apartment
- Open plan reception ▪ Wood flooring
- A stone's throw from the ▪ Prime central London River Thames location

This exceptional one bedroom apartment, located in the vibrant area of Charing Cross, is available for lease through Prime London.

Totalling 363 sq ft (33.72 sq m) the property boasts a generous open plan reception and fully equipped kitchen area with large windows allowing for excellent natural light throughout.

Carlton Mansions is nestled in the charming area of Charing Cross making it an excellent choice for those seeking a Central London living experience.

For transportation, Charing Cross and Embankment tube stations are just a stone's throw away and offer excellent transport links across the city, with access to the Bakerloo, Circle, Northern and District Lines.



These particulars, whilst believed to be accurate are set out as a general outline only for guidance and do not constitute any part of an offer or contract. Intending purchasers should not rely on them as statements of representation of fact, but must satisfy themselves by inspection or otherwise as to their accuracy. No person in this firm's employment has the authority to make or give any representation or warranty in respect of the property.