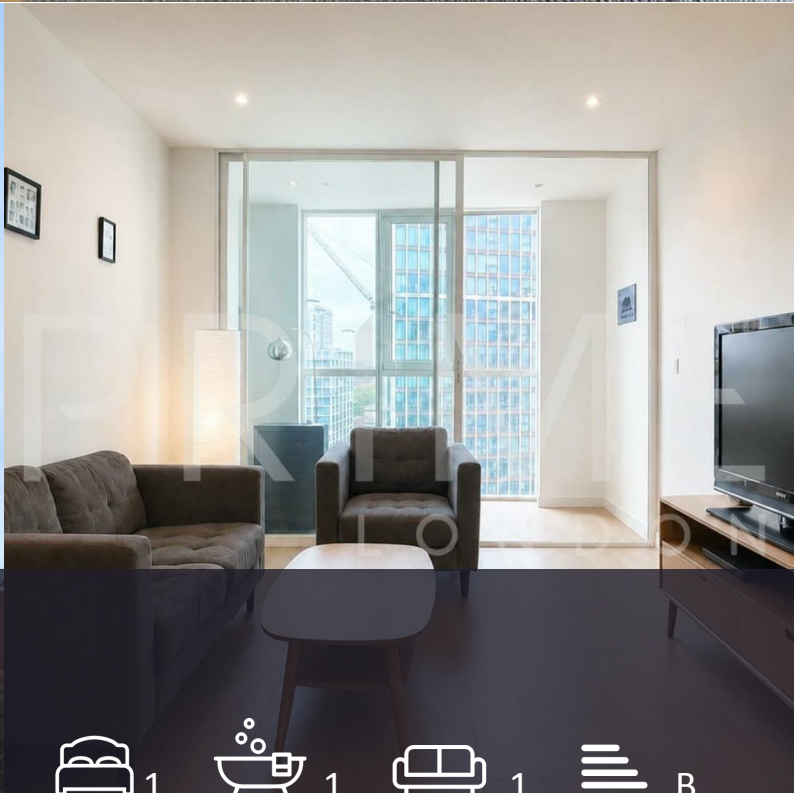




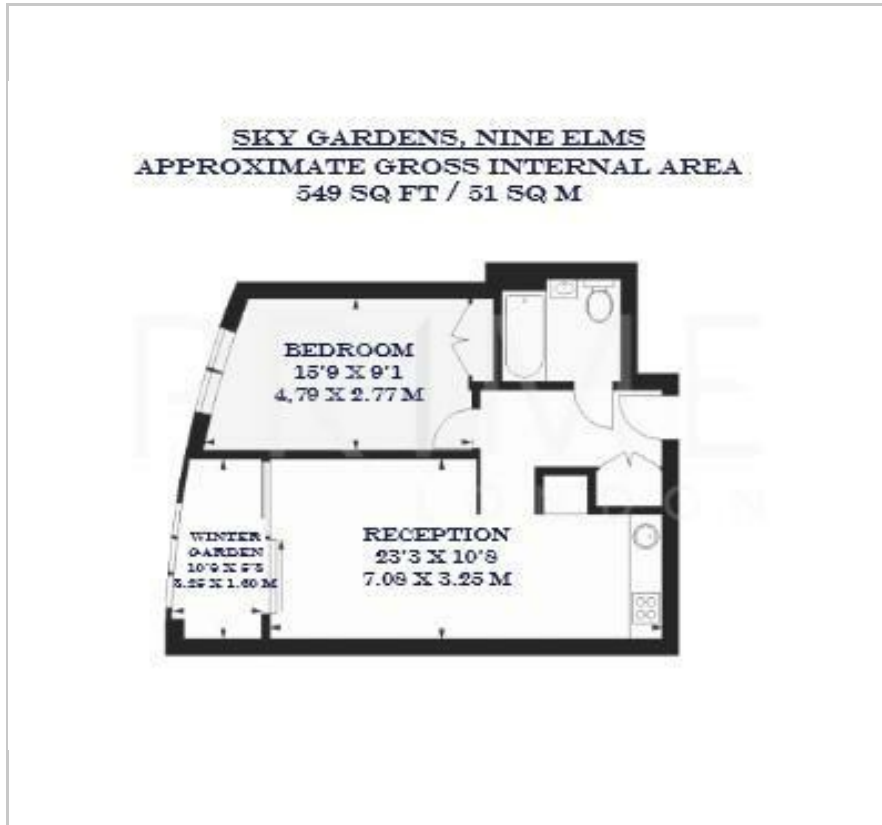
Sky Gardens

155 Wandsworth Road, Nine Elms, SW8 2FW

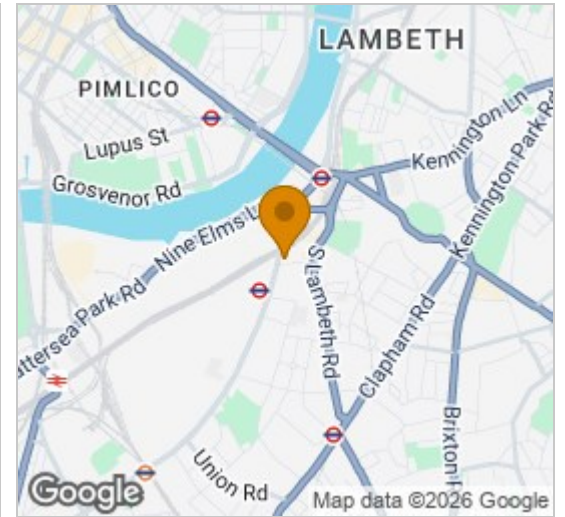
Asking Price £500,000



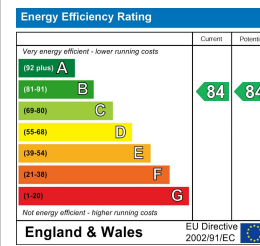
Floor Plan



Area Map



Energy Efficiency Graph



Viewing

By appointment. Contact us on 0207 928 6663 if you wish to arrange a viewing appointment for this property, or require further information.

- Bright one bedroom ▪ 549 sq ft (51 sqm) apartment
- Large private winter garden ▪ Resident's gymnasium and roof garden
- Close proximity to Vauxhall ▪ 24 hour concierge Underground and rail station

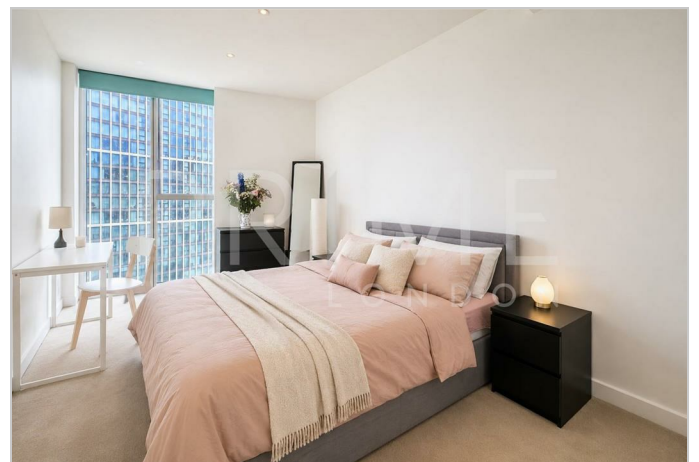


This bright one bedroom apartment, in the highly desirable Sky Gardens development located in Nine Elms, is available for chain free sale through Prime London.

Totalling 549 sq ft (51 sqm), this property comprises of an open plan reception area with fully fitted kitchen, leading on to a spacious winter garden, one sizeable bedroom and a bathroom. The property also has comfort cooling and underfloor heating.

Residents of Sky Gardens have access to a state of the art gymnasium located on the eighth floor, a 24 hour concierge service and thirty-fourth floor roof garden.

Sky Gardens is well located for access to the transport links of Vauxhall, including rail, tube, bus and a river taxi services. The local amenities include Waitrose, Sainsbury's, Argos, Starbucks and the various restaurants at St George Wharf.



These particulars, whilst believed to be accurate are set out as a general outline only for guidance and do not constitute any part of an offer or contract. Intending purchasers should not rely on them as statements of representation of fact, but must satisfy themselves by inspection or otherwise as to their accuracy. No person in this firm's employment has the authority to make or give any representation or warranty in respect of the property.