

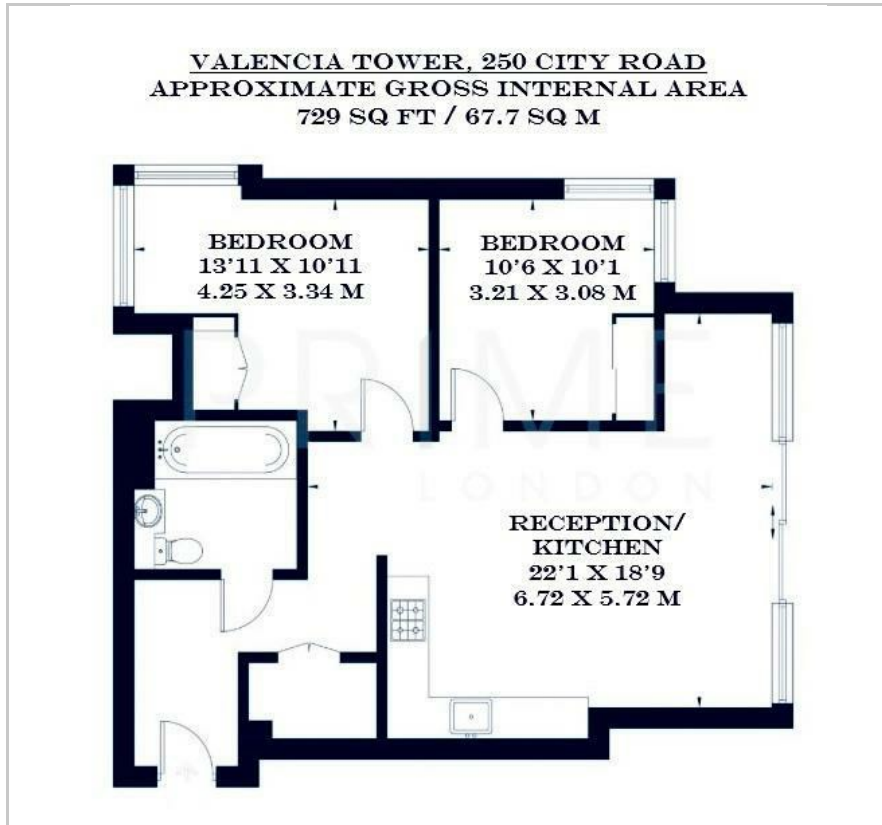
Valencia Tower

3 Bollinder Place, 250 City Road, EC1V 2AQ

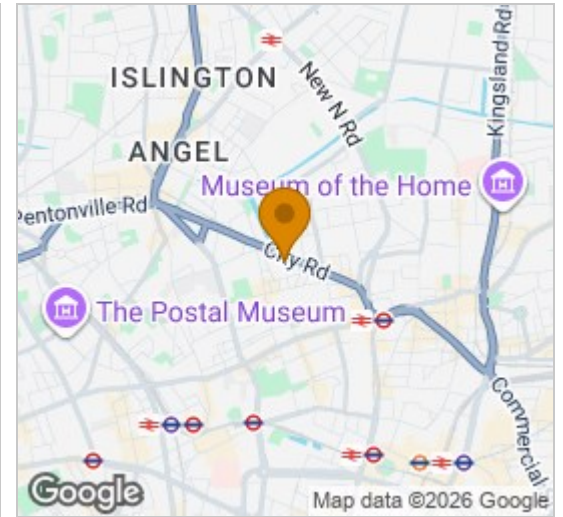
£888 Per Week



Floor Plan



Area Map



Energy Efficiency Graph



Viewing

By appointment. Contact us on 0207 052 1075 if you wish to arrange a viewing appointment for this property, or require further information.

- Exceptional two bedroom ▪ 729 sq ft (67.7 sqm) apartment
- Open plan reception/kitchen ▪ High floor
- Residents' gym, rooftop ▪ 24 hour concierge terrace, swimming pool and spa



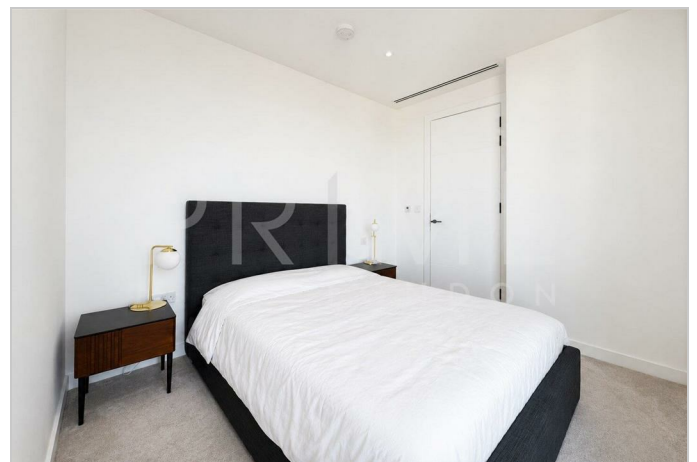
This exceptional two bedroom apartment, located in the highly sought after 250 City Road development, is available for lease through Prime London.

Totalling 729 sq ft (67.7 sqm), the property boasts a large open plan reception area and fully fitted kitchen with integrated appliances. Both bedrooms are generous, with floor to ceiling windows and ample storage space within their respective built in wardrobes.

Valencia Tower is situated within the luxurious 250 City Road development, which offers its residents a gym, yoga studio, games room, rooftop terrace, 20 metre swimming pool and spa facilities.

Positioned in the vibrant area of Old Street, the apartment has easy access to London's financial district, as well as a vibrant array of restaurants, cafes and bars.

For transport, Old Street station is just a stone's throw away and provides excellent transport links across the city via Northern Line and National Rail.



These particulars, whilst believed to be accurate are set out as a general outline only for guidance and do not constitute any part of an offer or contract. Intending purchasers should not rely on them as statements of representation of fact, but must satisfy themselves by inspection or otherwise as to their accuracy. No person in this firm's employment has the authority to make or give any representation or warranty in respect of the property.