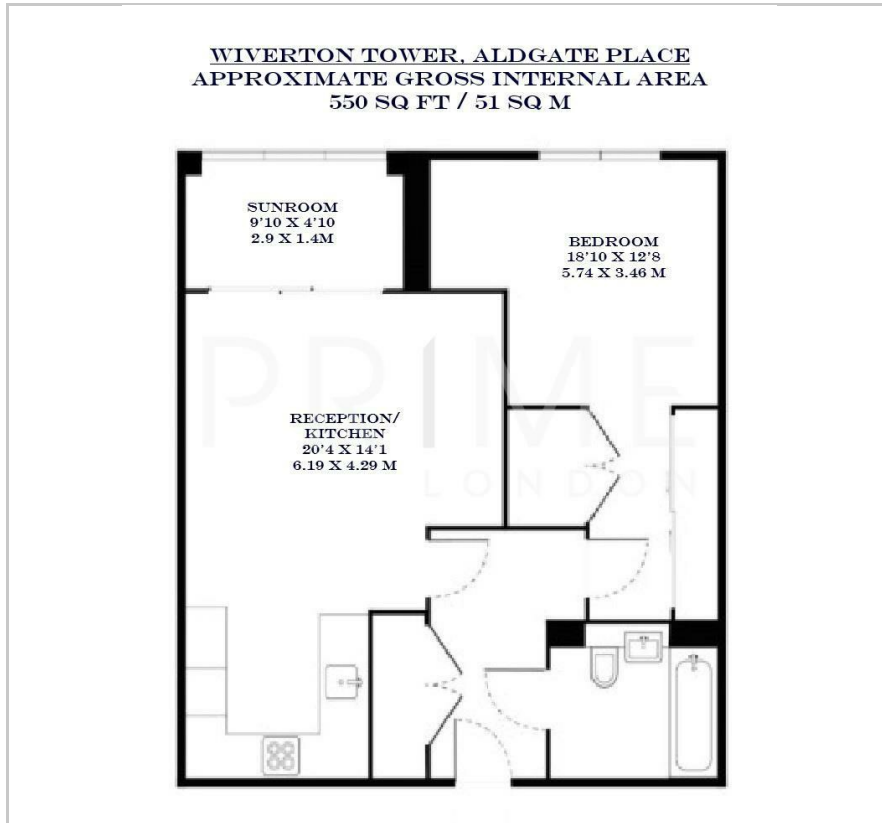


Wiverton Tower

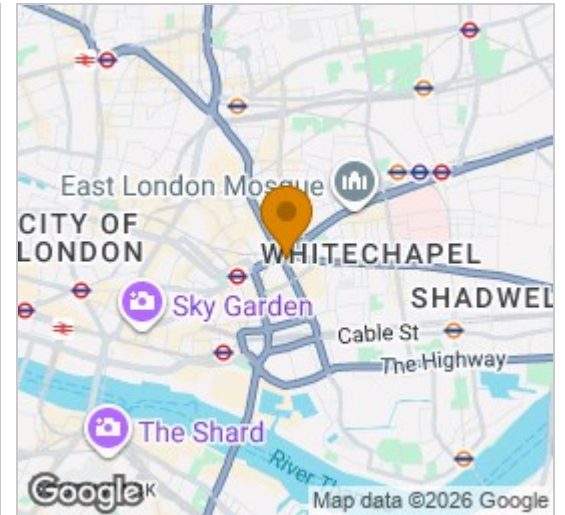
4 New Drum Street, Aldgate, E1 7AT

£600,000

Floor Plan



Area Map



Energy Efficiency Graph



Viewing

By appointment. Contact us on 0207 052 1075 if you wish to arrange a viewing appointment for this property, or require further information.

- Exceptional apartment
- 550 sq ft (51 sqm)
- Winter garden
- Open plan reception/kitchen
- Residents only gym and roof terrace
- 24 hour concierge



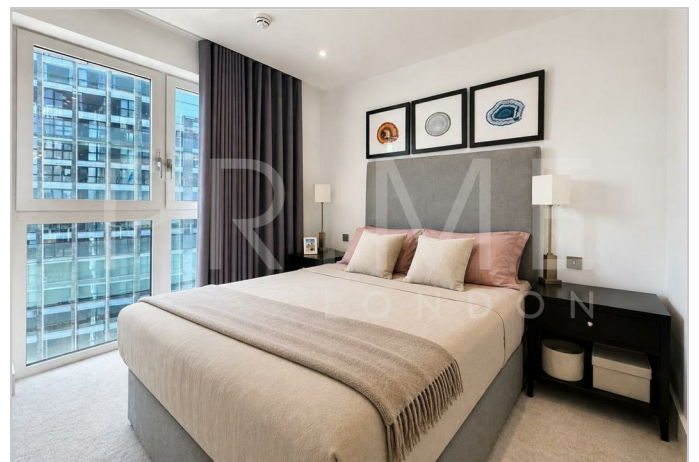
This exceptional one bedroom apartment, located in the popular Aldgate Place development, is available for chain free sale through Prime London.

Totalling 550 sq ft (51 sqm) the property boasts a generous open plan reception and kitchen area, which seamlessly extends into a private winter garden with floor to ceiling windows. The main bedroom is modern and spacious with built-in wardrobe storage space. The apartment also benefits from comfort cooling, stylish wooden floors and a sleek modern bathroom.

Wiverton Tower is located within the highly sought after Aldgate Place development, which offers residents a private gym, roof terrace and 24 hour concierge.

Located in the vibrant area of Aldgate, the apartment is just a short walk away from some of London's best restaurants, cafes and bars.

For transportation, Aldgate East station is just a stone's throw away and offers excellent transport links across the city.



These particulars, whilst believed to be accurate are set out as a general outline only for guidance and do not constitute any part of an offer or contract. Intending purchasers should not rely on them as statements of representation of fact, but must satisfy themselves by inspection or otherwise as to their accuracy. No person in this firm's employment has the authority to make or give any representation or warranty in respect of the property.