



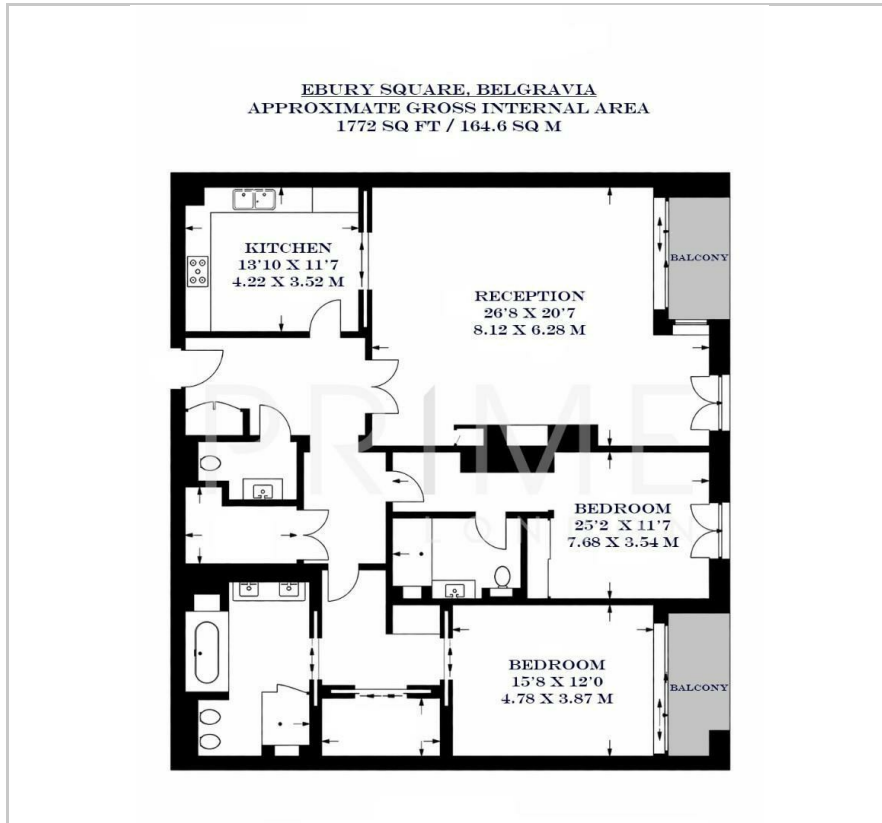
## One Ebury Square

Belgravia, SW1W 9AH

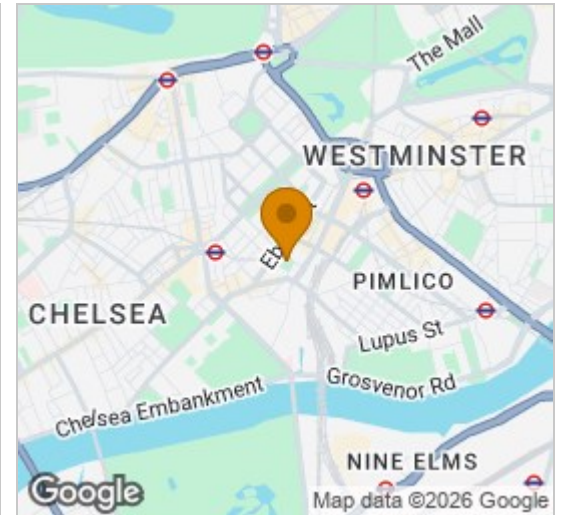
£3,750 Per Week



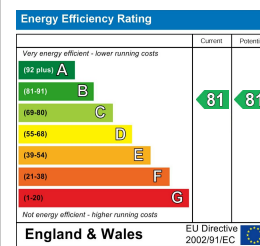
## Floor Plan



## Area Map



## Energy Efficiency Graph



## Viewing

By appointment. Contact us on 0207 052 1075 if you wish to arrange a viewing appointment for this property, or require further information.

- Exceptional two bedroom apartment
- 1772 sq ft (164.6 sqm)
- Parking
- Prestigious development
- Residents only private gym, steam and sauna facilities
- 24 hour concierge



This exceptional two bedroom apartment, located within the highly prestigious One Ebury Square, is available for lease through Prime London.

Totalling 1,772 sq ft (164.6 sqm), the property boasts a generous open plan reception and dining area with high ceilings allowing for excellent natural light throughout. Both bedrooms are generous in size and benefit from walk in wardrobe areas and their respective sleek ensuite bathrooms. The master bedroom and reception also feature access to private balconies. The property also comes with a parking space.

The apartment is situated within the Ebury Square development, which offers residents a private gym, steam and sauna facilities, as well as a 24 hour concierge and security service.

Positioned in the heart of Belgravia, the apartment has easy access to some of London's best restaurants, cafes and boutiques, with Elizabeth Street, Sloane Square and Eaton Square all just a short walk away.

For transport, Sloane Square and Victoria stations are just a stone's throw away and provide excellent transport links across the city.



These particulars, whilst believed to be accurate are set out as a general outline only for guidance and do not constitute any part of an offer or contract. Intending purchasers should not rely on them as statements of representation of fact, but must satisfy themselves by inspection or otherwise as to their accuracy. No person in this firm's employment has the authority to make or give any representation or warranty in respect of the property.