



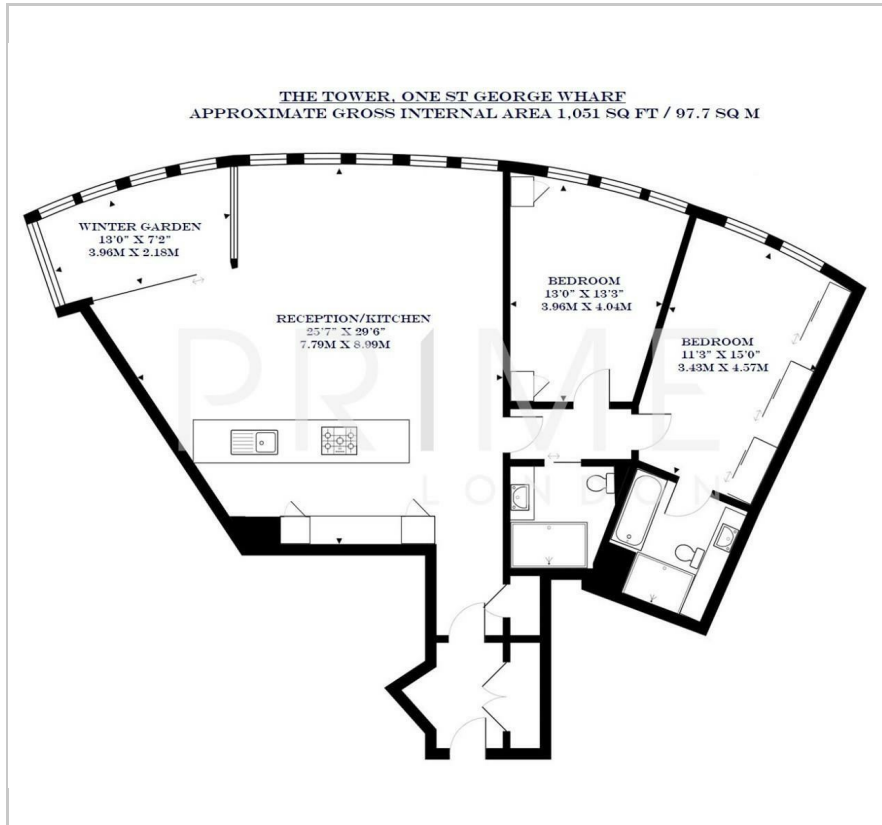
## The Tower

One St George Wharf, SW8 2DA

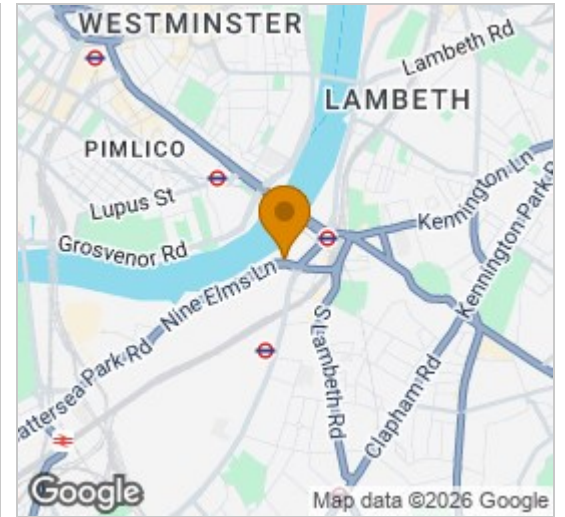
£1,634 Per Week



## Floor Plan



## Area Map



## Energy Efficiency Graph



## Viewing

By appointment. Contact us on 0207 928 6663 if you wish to arrange a viewing appointment for this property, or require further information.

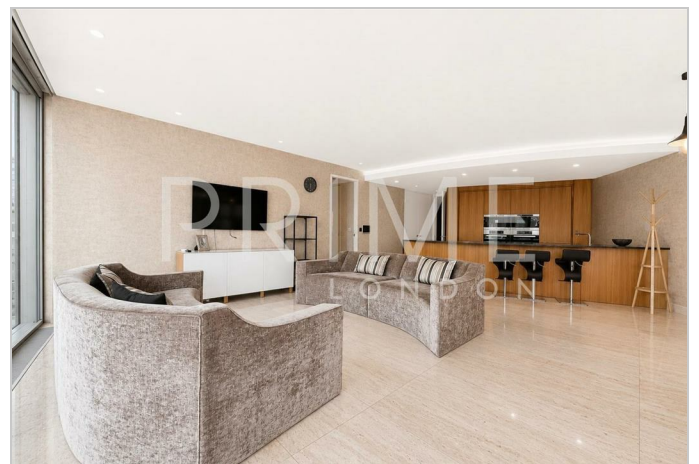
- Exceptional two bedroom apartment
- 1,051 sq ft (97.7 sqm)
- Stunning views
- Valet parking
- Front door concierge service
- Residents' lounge cinema, gym, pool and sauna facilities

A wonderfully furnished and beautifully designed two bedroom apartment with impressive views, totalling 1,051 sq ft (97.7 sqm), available for lease through Prime London. The property is also offered with valet parking.

The apartment offers a fully integrated kitchen with Miele appliances, high specification bathrooms with exquisite tiling and fittings, comfort cooling, touch panel controls, recessed lighting and automated winter garden.

Amenities include front door concierge with valet parking, first floor gym, pool and sauna facilities as well as a private cinema. St George Wharf also offers on site riverside bars and restaurants such as Waterfront London, The Riverside, Cottons, and Vine Bar, as well as direct access to Vauxhall Underground Station.

For additional convenience other on site outlets include Tesco Express, Pret a Manger, Hudson's Dry Cleaners, Riverside Medical Centre & Dental Spa and more.



These particulars, whilst believed to be accurate are set out as a general outline only for guidance and do not constitute any part of an offer or contract. Intending purchasers should not rely on them as statements of representation of fact, but must satisfy themselves by inspection or otherwise as to their accuracy. No person in this firm's employment has the authority to make or give any representation or warranty in respect of the property.