



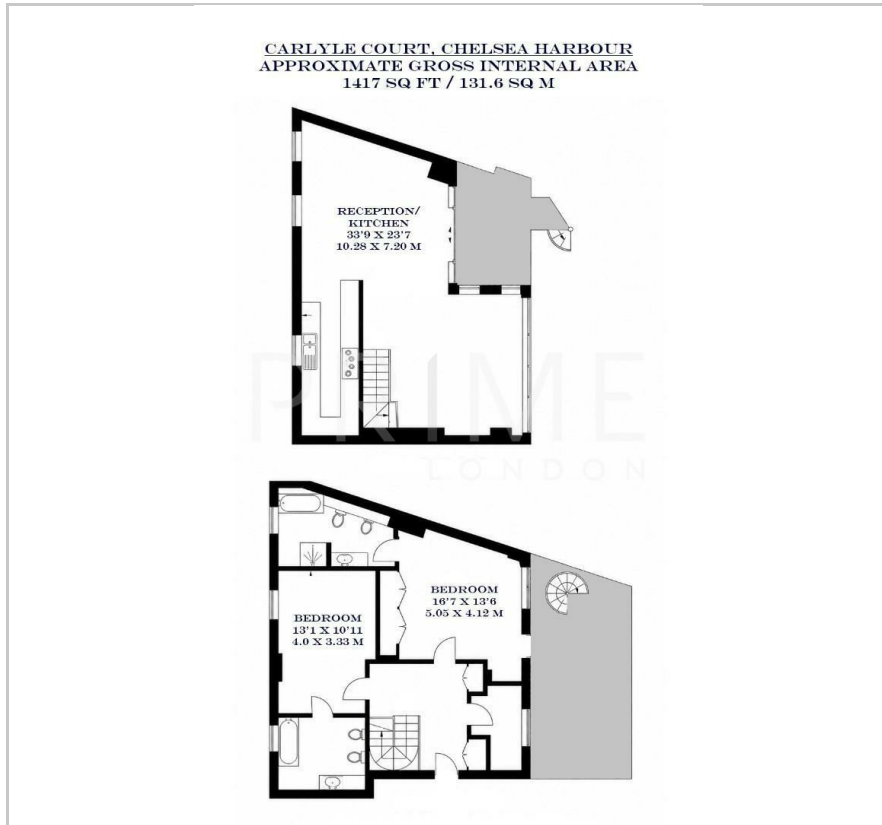
Carlyle Court, Chelsea Harbour

London, SW10 0UQ

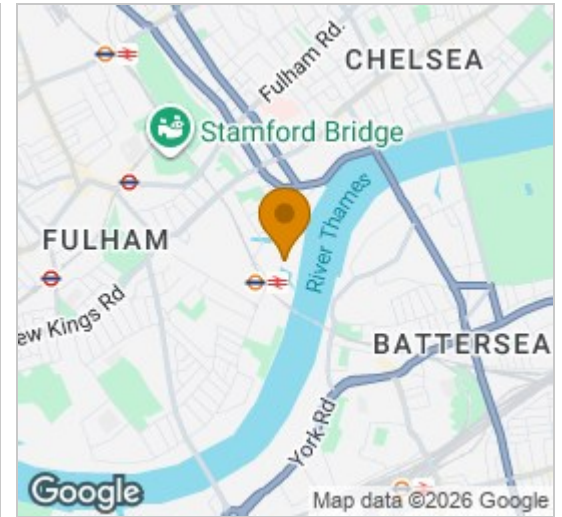
£1,200,000



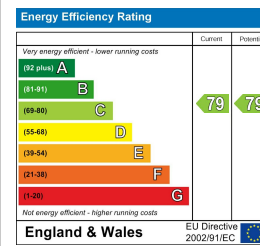
## Floor Plan



## Area Map



## Energy Efficiency Graph



## Viewing

By appointment. Contact us on 0207 052 1075 if you wish to arrange a viewing appointment for this property, or require further information.

- Exceptional apartment
- 1417 sq ft (131.6 sqm)
- Four secure parking spaces
- Two storey terrace
- Master bedroom with ensuite
- 24 hour concierge



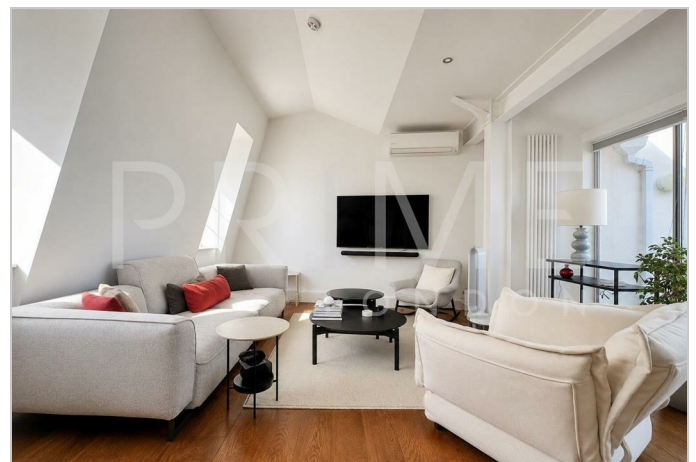
This exceptional two bedroom apartment, with four allocated parking spaces, located in the prestigious Chelsea Harbour development, is available for chain free sale through Prime London.

Totalling 1,417 sq ft (131.6 sqm), the property boasts a generous open plan reception and fully fitted kitchen area encompassing the entire top floor. A key feature of this apartment is the terrace, which offers two storeys of lounging space. The master bedroom is large with a walk in wardrobe area and sleek modern ensuite.

The property is situated within the prestigious Chelsea Harbour development, which offers residents maintained communal grounds and 24 hour concierge and security services.

Positioned in the prestigious area of Chelsea, the apartment has easy access to Chelsea's restaurants, cafes and boutiques.

For transport, Carlyle Court is just a short walk away from Imperial Wharf station, which offers excellent transport links across the city.



These particulars, whilst believed to be accurate are set out as a general outline only for guidance and do not constitute any part of an offer or contract. Intending purchasers should not rely on them as statements of representation of fact, but must satisfy themselves by inspection or otherwise as to their accuracy. No person in this firm's employment has the authority to make or give any representation or warranty in respect of the property.