

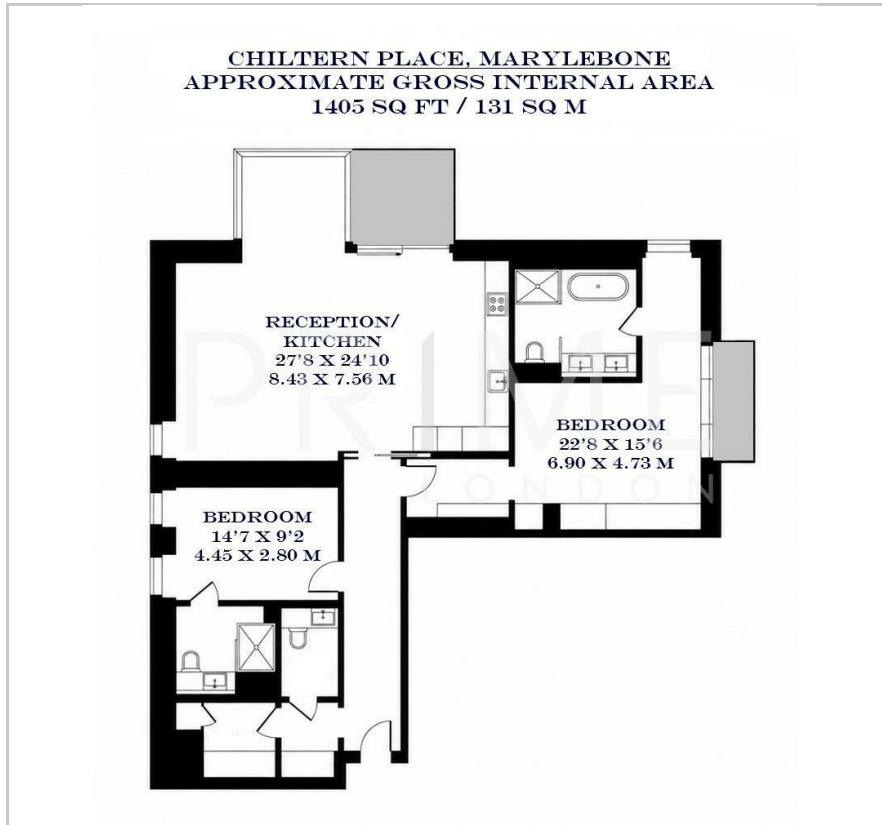
Chiltern Place

66 Chiltern Street, Marylebone, W1U 4EJ

£7,000 Per Week



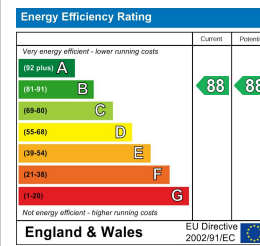
Floor Plan



Area Map



Energy Efficiency Graph



Viewing

By appointment. Contact us on 0207 052 1075 if you wish to arrange a viewing appointment for this property, or require further information.

- Exceptional two bedroom apartment
- 1405 sq ft (131 sqm)
- Two private balconies
- Open plan reception/kitchen
- Resident's only gym and meeting room
- 24 hour concierge

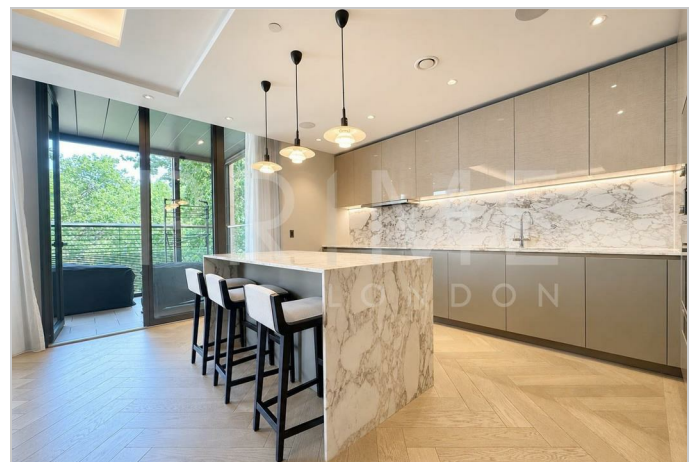
This exceptional two bedroom apartment, located within the highly prestigious Chiltern Place, is available for lease through Prime London.

Totalling 1,405 sq ft (131 sqm), the property boasts a generous open plan reception and fully fitted kitchen area, with high ceilings, floor to ceiling windows and modern features throughout. Both bedrooms are generous in size and benefit from their respective built in wardrobes and sleek ensuites. The apartment also showcases two private balconies.

Residents of Chiltern Place have access to a private gym, meeting room and 24 hour concierge and security services.

Positioned in the vibrant area of Marylebone, the apartment has easy access to some of London's best restaurants, bars and boutiques.

For transport, Baker Street station is just a stone's throw away and provides excellent transport links across the city.



These particulars, whilst believed to be accurate are set out as a general outline only for guidance and do not constitute any part of an offer or contract. Intending purchasers should not rely on them as statements of representation of fact, but must satisfy themselves by inspection or otherwise as to their accuracy. No person in this firm's employment has the authority to make or give any representation or warranty in respect of the property.