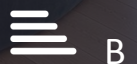




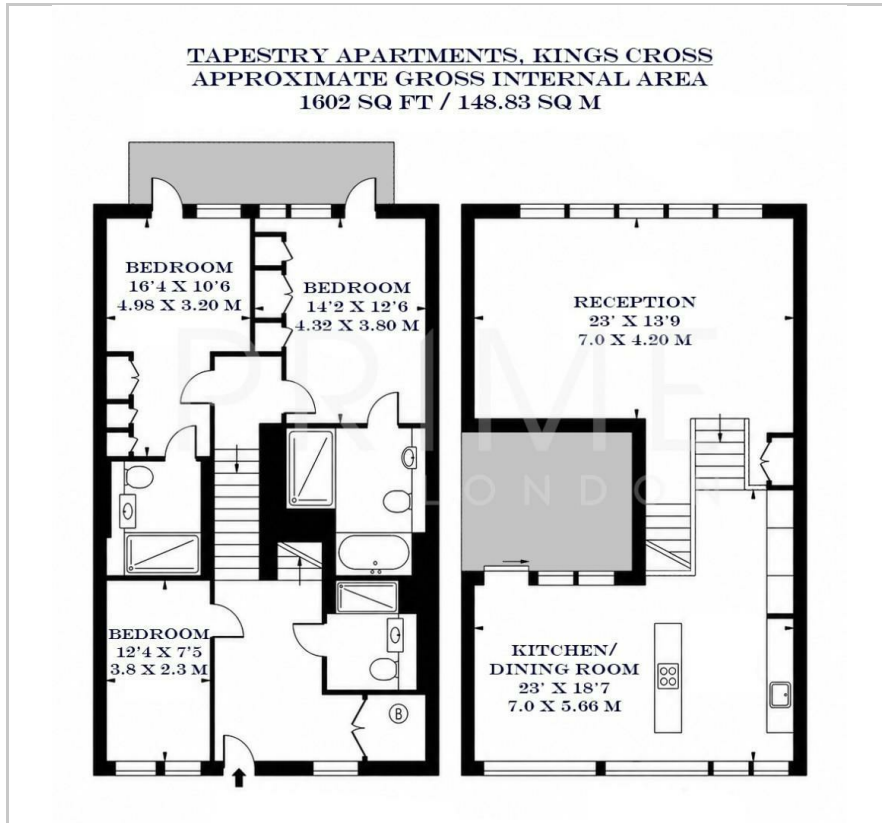
Tapestry Apartments

1 Canal Reach, Kings Cross, N1C 4AZ

£1,846 Per Week



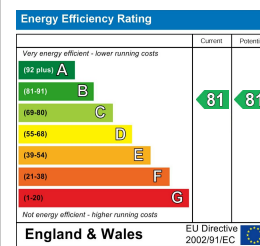
Floor Plan



Area Map



Energy Efficiency Graph



Viewing

By appointment. Contact us on 0207 052 1075 if you wish to arrange a viewing appointment for this property, or require further information.

- Exceptional three bedroom ▪ 1602 sq ft (148.83 sqm) apartment
- Two private and patio ▪ Master bedroom with ensuite
- Residents' gym, roof garden ▪ 24 hour concierge and entertainment suite

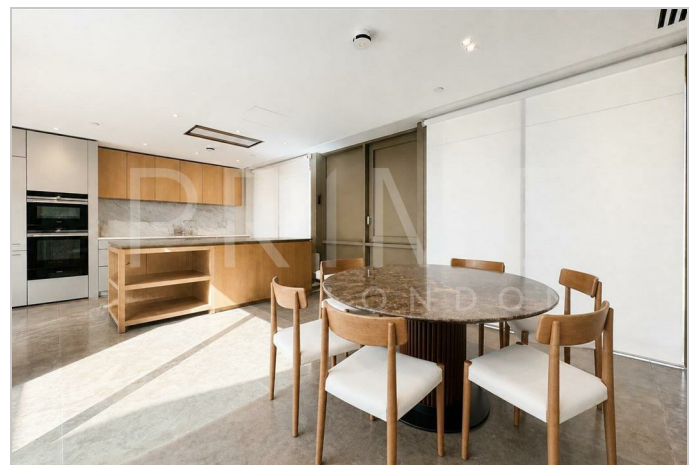
SHORT LET - This exceptional three bedroom apartment, located in the highly sought after Tapestry Apartments, is available for short term lease through Prime London.

Totalling 1,602 sq ft (148.83 sqm), the property boasts a generous open plan reception and fully fitted kitchen area encompassing the entire top floor. A key feature of this apartment is the two terraces, which offer ample lounging space. The master bedroom is large with a walk in wardrobe area and sleek modern ensuite.

The property is situated within the prestigious Lewis Cubitt Square, which offers residents a private gym, roof garden, dining and entertainment suite, residents' lounge and 24 hour concierge.

Positioned in the vibrant area of King's Cross, the apartment has easy access to some of London's best restaurants, cafes and bars.

For transport, Tapestry Apartments is just a short walk away from King's Cross and St. Pancras transport hub which links six London Underground lines with two national mainline rail stations and international high speed rail.



These particulars, whilst believed to be accurate are set out as a general outline only for guidance and do not constitute any part of an offer or contract. Intending purchasers should not rely on them as statements of representation of fact, but must satisfy themselves by inspection or otherwise as to their accuracy. No person in this firm's employment has the authority to make or give any representation or warranty in respect of the property.